

2019-2020



Guide for  
visitors with  
disabilities

# Accessible Paris



WWW •  
PARISINFO  
• COM

PARIS  
Tourist Office



## CONTENTS

WWW ●  
PARISINFO  
● COM



For more information on all the subjects touched on in this brochure, visit our website **PARISINFO.com**, rubric 'Practical Paris', subheading 'Visiting Paris with a disability'.

### PARIS TOURIST OFFICE

144 bd Macdonald,  
75019 Paris – France.

**Publication manager:**  
Nicolas Lefebvre.

**Contents:** Hervé Guillon.

**Translation:** D. Lindsay-Mc Geown.

**Design:** Graphéine | PCVB.

**Production:** PCVB.

**Cover photo and p.02:**  
© Hugo Michaudel.

**Prepress:** RVB Éditions.

**Printed by:**  
Imprimerie des Hauts de Vilaine  
35221 Châteaubourg – France.

**Printing completed in:**  
September 2018.

**Legal deposit:** September 2018.

- p.04 Arriving in Paris
- p.06 Getting around on public transport
- p.08 Getting around by private transport
- p.10 Staying in accessible accommodation
- p.14 Eating out in accessible places
- p.16 Visiting museums and monuments
- p.20 Outings in Paris
- p.22 Entertainment and leisure in Paris
- p.24 Making your trip easy
- p.26 A promenade along the banks of the Seine

**PARIS**  
Tourist Office



**MAIRIE DE PARIS** 

# WELCOME TO PARIS!

Paris is one of the cities that welcome the biggest number of tourists worldwide. Its exceptional architectural and cultural heritage, restaurants with renowned gastronomy, its vast public transport network, numerous shops and magnificent parks are constantly improving their accessibility.

The Paris Tourist Office has designed this booklet to make it easier for you to discover Paris and its surroundings. In these pages, you will find the keys to planning your arrival here, getting around, finding accommodation and places to eat, and enjoying all the accessible cultural and leisure activities. This guide also lists cultural attractions offering visits for all types of disabilities, notably auditive and visual.

What's more, you will find a wealth of practical information to ensure that you have a smooth and serene stay in the capital — whether you wish to call on an inbound agency to help you to organize your stay in Paris, rent an electric scooter or medical equipment, enjoy special benefits or locate accessible public toilets.

If you are getting around in a wheelchair, alone or with an accompanying person, this booklet offers you an adapted and comfortable tourism itinerary to discover the many aspects of Paris.

For tailored advice, we invite you to consult our website [PARISINFO.com](http://PARISINFO.com), rubric 'Practical Paris/ Visiting Paris with a disability' and to call in at one of our information points.

Enjoy your stay in Paris!

**Pierre Schapira**

President of the Paris Tourist Office



**Large print or Braille (in French only) versions of this brochure are available at the main information point of the Paris Tourist Office (opening times and addresses on p.24).**



## ● ARRIVING IN PARIS

### BY AIR

---

**Before you leave:** inform the air carrier of your requirements when you book, or at least 48 hours in advance. When you buy your ticket, you must fill in an INCAD form (Incapacitated Passengers Handling Advice) and have it signed by your doctor, who will decide whether or not they can authorize your journey. For your safety, the airline company can insist that you be accompanied. If you travel with **Air France**, you can request the assistance you need online. You can also contact Saphir, Air France's free booking assistance service for travellers with disabilities.

**Service Saphir** ☎ 09 69 36 72 77 ● [www.airfrance.fr](http://www.airfrance.fr) (contact form)

Information and contact details for Saphir (according to your country) ● [www.airfrance.fr](http://www.airfrance.fr), rubric Information/Preparing your trip/Health and passenger assistance

**Paris Aéroport** ensures that assistance is given to you from your arrival at Paris – Charles de Gaulle and Paris – Orly airports to your means of transport to Paris, as well as getting you seated on your return aircraft. Indicate your arrival, either via the telephone intercoms or at the check-in desks of your airline company.

**Paris Aéroport** ☎ 39 50 (€0.35/min) and +33 (0) 1 70 36 39 50 from abroad

● [www.parisaeroport.fr](http://www.parisaeroport.fr) (contact form)

For travel between the airports and Paris, the shuttle coaches **Le Bus Direct Paris Aéroport** are available to all passengers. Vehicles and stops are accessible to people in wheelchairs.

**Le Bus Direct Paris Aéroport** ☎ 0 810 81 20 01 (€0.12/min + cost of a call)

● [www.lebusdirect.com](http://www.lebusdirect.com) (contact form)

### BY TRAIN

---

The SNCF (French national railway company) makes travel easier for people with a disability with its free **Accès Plus** service. This service at the station to meet and then accompany them to and from their train must be booked at least 48 hours before departure.

**Accès Plus** ☎ 0 890 640 650, from 7am to 10pm, 7/7 (€0.12/min + cost of a call) ● [www.oui.sncf/services/acces-plus](http://www.oui.sncf/services/acces-plus) (booking form) or ● [accesplus@sncf.fr](mailto:accesplus@sncf.fr), or go to SNCF ticket offices and shops.

**Trains can be boarded** by a mobile ramp or a special lift apparatus. On board, TGV trains have dedicated areas reserved for people in wheelchairs. If you are travelling by **Eurostar**, arrive 45 minutes before the train departure time and speak to the staff, who will help you to board and alight from the train.



© Le Bus Direct / Aerolis



© PCVB / Daniel Thierry



© PCVB / Jacques Lebar

**Eurostar** ☎ 01 70 70 60 88 (France + cost of an international call) and +32 (0) 2 400 67 31 (Belgium)

● [contactus@eurostar.com](mailto:contactus@eurostar.com)

If you are travelling by **Thalys**, make your request for assistance by telephoning them on:

☎ +32 (0) 2 528 28 28 (cost of a local call) if your departure station is in Belgium (48 hrs before departure)

☎ +49 (0) 180 6 512 512 (first 30 seconds free, then €0.20/min from a land line in Germany or maximum €0.60/min from a mobile) if your departure station is in Germany (before 8pm, the day before departure);

☎ +31 (0) 30 235 78 22 (cost of a local call) if your departure station is in the Netherlands (24 hrs before departure);

☎ +33 (0) 890 640 650 (€0.12/min + cost of a call) if your departure station is in France (48 hrs before departure).

On board, there are specifically designed seating areas and accessible toilet facilities.

## BY COACH

---

Coach operators with services to Paris from France and Europe can accommodate people in wheelchairs. Get in touch with the company regarding accessibility:

**Ouibus** ☎ +33 (0) 9 69 32 33 48 (36 working hours before departure)

**Isilines** ☎ +33 (0) 1 49 72 57 27 ● [pmr@isilines.com](mailto:pmr@isilines.com) (36 hrs before departure)

**Eurolines** ☎ +33 (0) 1 49 72 57 27 ● [pmr@transdev-eurolines.com](mailto:pmr@transdev-eurolines.com) (36 hrs before departure)

**FlixBus** ☎ +33 (0) 176 36 04 12 (7 days before departure to keep your wheelchair in the passenger compartment and 36 hrs for your wheelchair to be stowed in the boot)

## BY CAR

---

If you are coming to Paris by car, we recommend that you use the **motorways**: their amenities are well adapted to people with disabilities. If you are travelling in an adapted class 2 (minivan type) vehicle, you are entitled to the class 1 (saloon type) rate at motorway tolls. Simply ask a member of staff, or call for assistance if the toll booth is an automatic one. Many **rest areas** have designated parking places, and accessible shops and toilet facilities. At all service stations, you can ask to be served by a petrol pump attendant. In the event of a breakdown or accident, if you are alone and the orange emergency phone is inaccessible, dial ☎ **112** (free) on your mobile phone.



## ● GETTING AROUND ON PUBLIC TRANSPORT

© RATP

**Getting around in the capital is simple and quick.** Paris and its region have an extensive and efficient public transport system. It includes an important bus network, several tramway lines and numerous metro lines linked to inter-urban express train (RER) lines and to some Transilien (SNCF suburban train) lines.

### BY BUS

---

All Parisian bus lines are accessible: vehicles are equipped with a retractable access ramp and 90% of bus stops are adapted (raised pavement). All buses have audio and visual announcements to indicate the next stop on the route. Since 2015, the most recent buses have two areas designed for passengers in wheelchairs.

### BY TRAM

---

The lines of the tramway network were designed from the beginning to be accessible to all types of disability: all carriages have flat floors and are level with the platform, and visual information is also transmitted by a sound system.

### BY METRO

---

The metro is the preferred transport of Parisians and visitors. All stations indicate the waiting time before the arrival of the next metro with visual displays and sound announcements. For safety, the platform edges of metro stations are lined with hazard warning strips — those on **lines 1, 13 and 14** are equipped with platform screen doors for optimal security for visually impaired people. Information aboard new metro carriages is provided in the form of dynamic line maps and sound announcements. Due to their age, **lines 1 to 13** are not adapted for people in wheelchairs. However, **the line 14**, the most recent one, is fully accessible to wheelchair users. It enables them to cross Paris from Saint-Lazare (9th) to Olympiades (13th). For blind or visually impaired travellers, the website ● [www.metro-connexion.org](http://www.metro-connexion.org) gives detailed information on connections in stations (information available only in French).



## BY RER AND TRANSILIEN

The RER, which is linked to the metro network in Paris, serves the Paris suburbs and its points of interest (Palace of Versailles, Disneyland® Paris, etc.). Transilien trains complete this transport network in the suburbs.

90% of stations adapted to wheelchair users on the RER A and B have lifts and wider passageways at ticket validation points. A mobile ramp between the platform and train is put in place by a member of staff (who also alerts your arrival station) to ensure that trains are accessible.

**If the station is an RATP one**, you can contact a member of staff via the call points and intercoms located on platforms and near to ticket validation points.

**If the station is an SNCF one**, you must book the **Accès Plus Transilien** free service by telephone or by email, no later than the day before your journey, before 12 noon.

**Accès Plus Transilien** ☎ 09 70 82 41 42, from 7am to 8pm, 7/7 (non-surcharged call)

● [accesplus@transilien-sncf.fr](mailto:accesplus@transilien-sncf.fr)

**NB:** the website ● [www.vianavigo.com/en](http://www.vianavigo.com/en), rubric 'My easy access transports', informs travellers of the accessibility of stations and enables them to distinguish those where it is necessary to book the service 'Accès Plus Transilien'. Information in the form of dynamic line maps and sound announcements is routinely installed in new metro carriages.



© PCVB/Daniel Thierry



© PCVB/Daniel Thierry



© PCVB/Daniel Thierry

## GOOD TO KNOW

To find an **itinerary adapted** to your requirements:

- [www.ratp.fr](http://www.ratp.fr), for the Parisian public transport network (tick the box 'accessible itineraries')
- [www.vianavigo.com/en](http://www.vianavigo.com/en), for the entire Paris region network (rubric 'My easy access transports', tick the box 'Find an accessible itinerary').

Need more information? Contact the service **Infomobi**:

**Infomobi** ☎ 09 70 81 83 85, from 7am to 10pm, 7/7 except 1 May (non-surcharged call)

● [www.vianavigo.com/en](http://www.vianavigo.com/en), 'Contact us' (contact form)

You are only entitled to **free travel** on Paris region public transport if you live in Paris or the Paris region, and have the Pass Paris Access'.



## ● GETTING AROUND BY PRIVATE TRANSPORT

### BY TAXI

---

The **G7 taxi company's Access service** has a fleet of more than 120 vehicles adapted to people in wheelchairs. Drivers have received special training to ensure that passengers with a physical disability or who are visually impaired are well taken care of.

To order a **G7 Access taxi** ☎ 01 47 39 00 91 ● [www.g7.fr](http://www.g7.fr), 'Book a G7', or use the G7 Taxi app.

Service available 24/7, 365 days a year. Fares are the same as for a conventional taxi service, in accordance with the applicable prefectural price scale.

### WITH A DRIVER

---

Companies specializing in transport on request for people with disabilities is another option for getting around Paris and benefiting from the services of a qualified driver.

**Allo Transport** ☎ 01 83 84 00 84 ● [contact@alлотransport.fr](mailto:contact@alлотransport.fr)

**ATAGH** ☎ 01 40 05 12 15 ● [association.atagh@gmail.com](mailto:association.atagh@gmail.com)

**UberACCESS** using the app Uber enter your chosen destination, then on the second page of the available options, select 'ACCESS' (same journey fare as for uberX)

**ABS Handitransport** ● [www.abshanditransport.fr](http://www.abshanditransport.fr), rubric 'Reservations'

**Adiate** ☎ 01 69 40 15 18 ● [client@adiate.fr](mailto:client@adiate.fr)

**Ayde Transport Accompagnement** ☎ 06 81 91 15 15 ● [ayde.handicap@gmail.com](mailto:ayde.handicap@gmail.com)

**CityZen Mobility** ☎ 01 78 90 70 00 ● [www.cityzenmobility.fr](http://www.cityzenmobility.fr), rubric 'Contacts'

**Epilobe** ☎ 01 75 73 06 39 ● <https://epilobe.fr>, rubric 'Contact'

**Handi Express** ☎ 01 48 13 09 34 ● [contact@handi-express.fr](mailto:contact@handi-express.fr)

**Handi Transport 78** ☎ 07 68 00 72 48 ● [contact.handitransport78@gmail.com](mailto:contact.handitransport78@gmail.com)

**Les Coccinelles** ☎ 01 56 20 26 00 ● [lescoccinelles.1@orange.fr](mailto:lescoccinelles.1@orange.fr)

**Quiétis** ☎ 01 47 41 57 60 ● [contact@quietis.net](mailto:contact@quietis.net)

**Transport Edelweiss** ☎ 01 69 45 41 60 ● [contact@transport-edelweiss.com](mailto:contact@transport-edelweiss.com) (at least 24 hrs before your journey)

**Transport Ontime** ☎ 06 98 97 98 28 ● [contact.transportontime@gmail.com](mailto:contact.transportontime@gmail.com)

**Vortex Mobilité** ☎ 01 69 64 54 00 ● [evry@vortex.fr](mailto:evry@vortex.fr)



## BY RENTING A VEHICLE

Several companies offer accessible vehicle rental:

**ABS Handi Transport** and **Transport Edelweiss** (see contact details p.08, 'With a driver')

**Handynamic** ☎ 03 28 555 111 ● contact@handynamic.fr

**Wheeliz** (peer-to-peer rental of accessible vehicles) ● www.wheeliz.com



© Handynamic



© AXsol



© PCVB/ Daniel Thierry

## ON AN ELECTRIC SCOOTER

The following companies deliver and then pick up electric scooters for people with reduced mobility.

**Axsol** ☎ 01 76 78 19 59 ● location@axsol.fr

**Mon Scooter PMR** ☎ 01 49 57 03 20 ● contact@monscooterpmr.fr

**HandiLib** ☎ 07 08 15 46 44 ● www.handi-lib.fr (contact form)

## PARKING IN PARIS

Travelling in a private vehicle? Adapted parking places are reserved for people with disabilities on roads (free) and in municipal car parks (like Saemes).

**Parking Saemes** ● www.saemes.fr, rubric 'Contacts'

To use these, you must have **the Carte Mobilité Inclusion** or **the European Parking Card** for people with disabilities, valid in all member countries of the European Union. Place your card on the dashboard. In Paris, **the time limit for parking** in the same parking spot is 7 consecutive days on 'voies mixtes' (identifiable by a yellow sticker on parking metres) and 24 hrs maximum on 'voies rotatives' (busy shopping roads).

FIND  
OUT  
MORE



Dedicated parking places: ● <https://capgeo.sig.paris.fr/Apps/StationnementHandicape/>  
Types of roads and maximum parking time:  
● <https://capgeo.sig.paris.fr/Apps/ZonesStationnementResidentiel/>



## ● STAYING IN ACCESSIBLE ACCOMMODATION

**Paris has an abundant and varied range of tourist accommodation.** Much of this is adapted for people with disabilities. Specific facilities and devices include for example: ground level access, at least one adapted bedroom with bathroom equipped with floor-level shower and toilet with transfer bar, stairs with safety features, obstacles at face-height neutralized, lights linked to fire alarm sounder, easy-to-understand signposting. And of course, informed and attentive staff.

### ACCOMMODATION FOR YOUNG PEOPLE AND GROUPS

More community orientated than hotels, hostels and other centres for international stays are open to all travellers looking for a relaxed friendly atmosphere and budget prices. A few addresses:

**Generator Paris** 📍 9-11 place du Colonel Fabien (10th) ☎️ 01 70 98 84 00 ● paris@generatorhostels.com

**St. Christopher's Inns – Gare du Nord** 📍 5 rue de Dunkerque (10th) ☎️ 01 70 08 52 22

● gdnreception@st-christophers.co.uk

**FIAP Jean Monnet** 📍 30 rue Cabanis (14th) ☎️ 01 43 13 17 00 ● bonjourfiap@fiap-paris.org

**Auberge de Jeunesse Paris – Yves Robert** 📍 20 esplanade Nathalie Sarraute (18th) ☎️ 01 40 38 87 90

● paris.yves-robert@hifrance.org

**Résidence Internationale de Paris** 📍 44 rue Louis Lumière (20th) ☎️ 01 40 31 45 45 ● info@ee-rip.com

**Jo&Joe Paris** 📍 89-93 avenue Paul Vaillant-Couturier – Gentilly (94) ☎️ 01 45 38 86 00 ● paris@joandjoe.com

### HOTELS

Below, you will find a selection of hotels designed to welcome you and listed according to rated category, situated in Paris or in a neighbouring municipality. Hotels marked with this symbol 🏠 have at least 8 adapted bedrooms. Good to know: more than **500 accessible hotels** are listed on PARISINFO.com.

#### 1 STAR

**F1 Paris Porte de Châtillon** 🏠 📍 23 avenue de la porte de Châtillon (14th) ☎️ 0 891 705 229 (€0.30/min + cost of a call) ● H5010@accor.com

**Solar Hôtel** 📍 22 rue Boulard (14th) ☎️ 01 43 21 08 20 ● contact@solarhotel.fr

**F1 Paris Saint-Ouen Marché aux Puces** 🏠 📍 29 rue du Docteur Babinski (18th) ☎️ 0 891 70 53 50 (€0.30/min + cost of a call) ● H2539@accor.com

## 2 STARS

**District République** 📍 4 rue Lucien Sampaix (10th) 📞 01 42 08 20 09 ● contact@hoteldistrictrepublique.com  
**Hôtel du Printemps** 📍 80 boulevard de Picpus (12th) 📞 01 43 43 62 31 ● contact@hotel-paris-printemps.com  
**B&B Hôtel Paris Porte des Lilas** 📍 23 avenue René Fonck (19th) 📞 0 892 70 18 80 ● bb\_4560@hotelbb.com

## 3 STARS

**Hôtel Central Saint-Germain** 📍 3 rue Champollion (5th) 📞 01 46 34 14 20 ● hotel@hotelcentralsaintgermain.fr  
**Hôtel Joyce – Astotel** 📍 29 rue la Bruyère (9th) 📞 01 55 07 00 01 ● hotel.joyce@astotel.com  
**Ibis Paris Bastille Opéra 11<sup>e</sup>** 📍 15 rue Bréguet (11th) 📞 01 49 29 20 20 ● H1399@accor.com  
**Ibis Styles Paris Bercy** 📍 77 rue de Bercy (12th) 📞 01 53 46 50 50 ● H0941@accor.com  
**Lodge In mis** 📍 2-16 rue Théroigne de Méricourt (13th) 📞 01 42 17 46 20 ● contact@lodgein.travel  
**Hôtel Palais de Chaillot** 📍 35 avenue Raymond Poincaré (16th) 📞 01 53 70 09 09  
● info@hotelpalaisdechaillot.com  
**Hôtel Armoni** 📍 7 villa Berthier (17th) 📞 01 42 12 44 00 ● contact@hotelarmoniparis.com  
**Timhotel Berthier Paris 17** 📍 4 boulevard Berthier (17th) 📞 01 46 27 10 00 ● reception.berthier@timhotel.fr  
**Hôtel Basss** 📍 57 rue des Abbesses (18th) 📞 01 42 51 50 00 ● contact@hotel-basss.com  
**Hôtel Lumières** 📍 110 rue Damrémont (18th) 📞 01 42 64 25 75 ● contact@hotel-lumieres.com  
**Campanile Paris La Villette** 📍 147-151 avenue de Flandre (19th) 📞 01 44 72 46 46  
● paris.lavillette@campanile.fr  
**Holiday Inn Express Paris – Canal de la Villette** 📍 68 quai de la Seine (19th) 📞 01 44 65 01 01  
● exhi@hotels-res.com



© Hôtel Joyce Astotel / J.-B. Clévenot



© Hôtel Palais de Chaillot



© B&B Hôtel Porte des Lilas

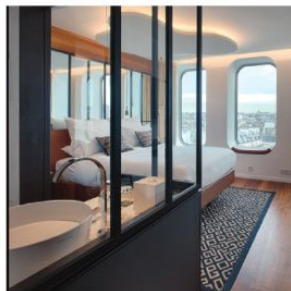
## 4 STARS

**123 Sébastopol** 📍 123 boulevard de Sébastopol (2nd) 📞 01 40 39 61 23 ● hotel.123sebastopol@astotel.com  
**Seven Paris** 📍 20 rue Berthollet (5th) 📞 01 43 31 47 52 ● contact@sevenhotelparis.com  
**Hôtel du Rond-Point des Champs-Élysées** 📍 10 rue de Ponthieu (8th) 📞 01 53 89 14 14  
● hrp@espritdefrance.com (spa fully accessible)  
**Le Pigalle** 📍 9 rue Frochot (9th) 📞 01 48 78 37 14 ● welcome@lepigalle.paris  
**Crowne Plaza Paris République** 📍 10 place de la République (11th) 📞 01 43 14 43 50  
● reservations@cp-paris.com  
**Pullman Paris Centre Bercy** 📍 1 rue de Libourne (12th) 📞 01 44 67 34 00 ● H2192@accor.com  
**Hôtel Concorde Montparnasse** 📍 40 rue du Commandant Mouchotte (14th) 📞 01 56 54 84 00  
● sales@hotel-montparnasse.com

**Mercurie Paris Centre Tour Eiffel** 📍 20 rue Jean Rey (15th) ☎️ 0 825 80 17 17 📧 H2175@accor.com  
**Novotel Paris Centre Tour Eiffel** 📍 61 quai de Grenelle (15th) ☎️ 01 40 58 20 00 📧 H3546@accor.com  
**Pullman Paris Tour Eiffel** 📍 entrée au 22 rue Jean Rey (15th) ☎️ 01 44 38 56 00 📧 H7229@accor.com  
**Le Méridien Étoile** 📍 81 boulevard Gouvion Saint-Cyr (17th) ☎️ 01 40 68 34 34 📧 guest.etoile@lemeridien.com  
**Novotel Paris Est** 📍 1 avenue de la République – Bagnolet (93) ☎️ 01 49 93 63 00 📧 H0380@accor.com



© Le Méridien Étoile



© Renaissance Paris République



© Le Cinq Codet / Gilles Trillard

## 5 STARS

**Le Meurice (Palace)** 📍 228 rue de Rivoli (1st) ☎️ 01 44 58 10 10 📧 info.LMP@dorchestercollection.com  
**Mandarin Oriental Paris (Palace)** 📍 251 rue Saint-Honoré (1st) ☎️ 01 70 98 78 88  
 📧 mopar-reservations@mohg.com  
**Ritz Paris** 📍 15 place Vendôme (1st) ☎️ 01 43 16 30 30 📧 resa@ritzparis.com  
**Lutetia** 📍 45 boulevard Raspail (6th) ☎️ 01 49 54 46 00 📧 contact@hotellutetia.com  
**Le Cinq Codet** 📍 5 rue Louis Codet (7th) ☎️ 01 53 85 15 60 📧 contact@le5codet.com  
**Buddha-Bar Hotel Paris** 📍 4 rue d'Anjou (8th) ☎️ 01 83 96 88 88 📧 reservations@bbhparis.com  
**Hôtel Barrière Le Fouquet's Paris** 📍 46 avenue George V (8th) ☎️ 01 40 69 60 00 📧 www.hotelsbarriere.com  
 (contact form)  
**Sofitel Paris le Faubourg** 📍 15 rue Boissy d'Anglas (8th) ☎️ 01 44 94 14 14 📧 H1296@sofitel.com  
**Intercontinental Paris Le Grand** 📍 2 rue Scribe (9th) ☎️ 01 40 07 32 32 📧 legrand@ihg.com  
**Renaissance Paris République** 📍 40 rue René Boulanger (10th) ☎️ 01 71 18 20 95  
 📧 sales@renaissanceparisrepublique.com  
**Shangri-La Hotel Paris (Palace)** 📍 10 avenue d'Iéna (16th) ☎️ 01 53 67 19 98 📧 www.shangri-la.com  
 (contact form)

Due to heritage and/or overriding technical constraints, several hotels are exempt from the rules of accessibility for people with a motor disability. Consequently, some hotels have given particular attention to facilities for people with a sensorial disability, like the Hôtel Brittany.

**Hôtel Brittany (3 stars)** 📍 3-5 rue Saint-Lazare (9th) ☎️ 01 48 78 44 50 📧 resa@hotel-brittany.net

## ON THE OUTSKIRTS OF PARIS

More recent and with less patrimonial constraints than Parisian hotels, all the establishments in the areas of the **Paris – Charles de Gaulle** and **Paris – Orly** airports, and the business area of **La Défense**, **Disneyland® Paris** and the **Stade de France** are adapted for people with disabilities. In Versailles, close to the famous palace:

**Hôtel Ibis Versailles Château (3 stars)** 📍 4 avenue du Général de Gaulle – Versailles (78) 📞 01 39 53 03 30

● H1409@accor.com

**Hôtel La Résidence du Berry (3 stars)** 📍 14 rue d'Anjou – Versailles (78) 📞 01 39 49 07 07

● resa@hotel-berry.com

**Novotel Château de Versailles (4 stars)** 📍 4 boulevard Saint-Antoine – Le Chesnay (78) 📞 01 39 54 96 96

● H1022@accor.com

## CAMPSITES

Open-air accommodation including pitches or cottages accessible to wheelchair users, in a green setting.

**Camping de Paris (4 stars)** 📍 2 allée du Bord de l'Eau (16th) 📞 01 45 24 30 00 ● info@campingparis.fr

**Camping La Belle Étoile (3 stars)** 📍 64 bis quai Maréchal Joffre – La Rochette (77) 📞 01 64 39 48 12

● info@campinglabelleetoile.com

**Camping International de Maisons-Laffitte (4 stars)** 📍 1 rue Johnson – Maisons-Laffitte (78)

📞 01 39 12 21 91 ● maisonslaffitte@sandaya.fr

FIND  
OUT  
MORE



To select your accommodation, we invite you to use the advanced search option on PARISINFO.com, rubric 'Where to stay'. Choose the criteria that interest you: location, services, rating and type of disability.

## THE 'TOURISME & HANDICAP' STATE QUALITY RATING



Since 2001, the **Tourisme & Handicap** State quality rating is a guarantee of an accessible building and an efficient and adapted welcome. The list of establishments likely to have

this mark is long: hotels, B&Bs, restaurants, monuments, museums, theme parks, concert halls, etc. As the mark is not automatically attributed for all 4 major types of disability together (hearing, mental, physical and visual), check the pictograms well that indicate those for which the establishment has the mark.

On PARISINFO.com you can consult the list of accommodation, restaurants, or cultural sites that have been attributed the mark in Paris and the Paris region by using the advanced search option in the rubrics 'Where to stay', 'Eating out', 'What to see' and 'Going out' and by clicking on 'Tourisme & Handicap' (according to your type of disability).



## — • EATING OUT IN ACCESSIBLE PLACES

**Paris, the capital of gastronomy**, invites visitors from all over the world to come and enjoy its cuisine. The city offers a huge variety of types of cooking and decor, and every district is full of great places to eat. More and more restaurants in Paris are offering adapted facilities and an adapted service to meet the requirements of people with disabilities. Most of them offer an online booking service.

### BRASSERIES

For a particularly Parisian atmosphere, eat out at a classic brasserie.

**Brasserie Gallopin** 📍 40 rue Notre-Dame-des-Victoires (2nd) ☎️ 01 42 36 45 38 ● [contact@gallopin.com](mailto:contact@gallopin.com)

**Bouillon Racine** 📍 3 rue Racine (6th) ☎️ 01 44 32 15 60 ● [bouillonracine@orange.fr](mailto:bouillonracine@orange.fr)

**Brasserie Printemps** 📍 64 boulevard Haussmann – Printemps Mode 6th floor (9th) ☎️ 01 42 82 58 84

● [c.ganneau@groupe-bertrand.com](mailto:c.ganneau@groupe-bertrand.com)

### RESTAURANTS

**Champeaux** 📍 Forum des Halles La Canopée (1st) ☎️ 01 53 45 84 50 ● [restaurant.champeaux@alain-ducasse.com](mailto:restaurant.champeaux@alain-ducasse.com)

**Bistrot d'Edmond** 📍 23 rue du 4 Septembre (2nd) ☎️ 01 47 42 93 51 ● [www.bistrotedmond.fr](http://www.bistrotedmond.fr) (contact form)

**Les Jalles** 📍 14 rue des Capucines (2nd) ☎️ 01 42 61 66 71 ● [www.restaurantlesjalles.fr](http://www.restaurantlesjalles.fr) (contact form)

**Le Georges** 📍 43 rue Saint-Merri – Centre Pompidou (4th) ☎️ 01 44 78 47 99 ● [commercial@beaumarly.com](mailto:commercial@beaumarly.com)

**Café Louise** 📍 155 boulevard Saint-Germain (6th) ☎️ 01 42 22 88 98 ● [info.cafelouise@gmail.com](mailto:info.cafelouise@gmail.com)

**Les Éditeurs** 📍 4 carrefour de l'Odéon (6th) ☎️ 01 43 26 67 76 ● [info@lesediteurs.fr](mailto:info@lesediteurs.fr)



© Champeaux



© Chez François



© Restaurant du Musée d'Orsay / S. Meyer



- Lucernaire** 📍 53 rue Notre-Dame-des-Champs (6th) ☎ 01 45 44 57 34 ● restaurant@lucernaire.fr
- Café Branly** 📍 27 quai Branly – Musée du Quai Branly – Jacques Chirac (7th) ☎ 01 47 53 68 01  
● commercial.museequaibrany@museum-paris.com
- Les Ombres** 📍 27 quai Branly – Musée du Quai Branly – Jacques Chirac (7th) ☎ 01 47 53 68 00  
● www.lesombres-restaurant.com (online booking)
- Restaurant du musée d'Orsay** 📍 1 rue de la Légion d'Honneur – Musée d'Orsay (7th) ☎ 01 45 49 47 03  
● commercial.orsay@museum-paris.com
- Buddha-Bar** 📍 8-12 rue Boissy d'Anglas (8th) ☎ 01 53 05 90 00 ● buddhabar@buddhabar.com
- Chez Francis** 📍 7 place de l'Alma (8th) ☎ 01 47 20 86 83 ● chezfrancis@gr-restaurants.fr
- Doobie's** 📍 2 rue Robert Estienne (8th) ☎ 01 53 76 10 76 ● victor@doobies.net
- Restaurant Laurent** 📍 41 avenue Gabriel (8th) ☎ 01 42 25 00 39 ● info@le-laurent.com
- Artisan de la Truffe** 📍 19 rue des Martyrs (9th) ☎ 01 42 08 20 55 ● www.artisandelatruffeparis.com  
(contact form)
- Café Guiry** 📍 10 place Édouard VII (9th) ☎ 01 40 07 00 77 ● contact@thetreedouard7.com
- Chai 33** 📍 33 cours Saint-Émilien – Bercy Village (12th) ☎ 01 53 44 01 01 ● info@chai33.com
- Panasia** 📍 Beaugrenelle Paris (15th) ☎ 01 45 75 16 33 ● beaugrenelle@panasia.fr
- Café de l'Homme** 📍 17 place du Trocadéro et du 11 Novembre – Musée de l'Homme (16th) ☎ 01 44 05 30 15  
● reservation@cafedelhomme.com
- Le Stella** 📍 133 avenue Victor Hugo (16th) ☎ 01 56 90 56 00 ● info@lestella.fr
- Maison Pradier** 📍 1 place du Trocadéro et du 11 Novembre (16th) ☎ 01 53 65 30 70  
● chaillotpradier@pradierparis.com
- Restaurant Les Arts** 📍 9 bis avenue d'Iéna (16th) ☎ 01 40 69 27 53 ● restaurant.am@sodexo-prestige.fr
- Mama Shelter** 📍 109 rue de Bagnole (20th) ☎ 01 43 48 48 48 ● food.paris@mamashelter.com

## UNUSUAL RESTAURANTS

Enjoy your meal ... in the dark! Meals are served by blind people:

**Dans le Noir ?** 📍 51 rue Quincampoix (4th) ☎ 01 42 77 98 04 ● https://paris.danslenoir.fr (contact form)  
Having a meal at a height of 58 metres at one of Paris's most iconic tourist attractions in Paris is possible at 58 Tour Eiffel.

**58 Tour Eiffel** 📍 1st floor of the Eiffel Tower (7th) ☎ 0 825 566 662 (€0.15/min)  
● www.restaurants-toureffel.com (online booking)

In Versailles, the baroque restaurant-theatre ReminiSens transports you back to the 18th century:  
**ReminiSens** 📍 20 rue Baillet-Lévion – Versailles (78) ☎ 01 39 23 10 65 ● contact@reminisens.fr

If you are in a group, the 'Restaurants du Monde Carrousel du Louvre' food court offers fast food on the theme of world flavours, in a totally accessible shopping centre, right in the heart of Paris.

**Restaurants du Monde** 📍 Carrousel du Louvre – 99 rue de Rivoli (1st) ☎ 01 55 35 12 60  
● www.restaurantsdumonde.fr (contact form)

FIND  
OUT  
MORE

To select your restaurant, use the advanced search option on PARISINFO.com, rubric 'Where to eat' and choose from the different criteria: location, French cuisine, foreign cuisine, services and disability.



## • VISITING MUSEUMS AND MONUMENTS

**Whether you are passionate about history or a fan of contemporary art**, you will certainly find a museum or monument in Paris to interest you. As well as providing accessibility for wheelchair users, more and more places are offering adapted tours for visitors with sensory or mental disabilities. The following lists are non exhaustive. We recommend that you contact the establishment in advance of your visit to check that the service offered is compatible with your needs: **'A'** signifies that lip-reading tours, or tours in LSF (French sign language) are available for people with hearing impairments; **'Me'** indicates that special activities are organized for people with mental disabilities; **'Mo'** indicates that the space is accessible to people in wheelchairs, and **'V'** signals that amenities and audio described and tactile tours are offered to people with visual impairments.

### IN AND AROUND PARIS

**Arc de Triomphe (A, Me, Mo, V)** 📍 Place Charles de Gaulle (8th) ☎️ 01 55 37 73 77

● [www.paris-arc-de-triomphe.fr](http://www.paris-arc-de-triomphe.fr) (contact form)

**Archaeological crypt of the Île de la Cité (A, Mo except old port area, V)**

📍 Parvis Notre-Dame – 7 place Jean-Paul II (4th) ☎️ 01 55 42 50 10 ● [carnavalet.actionculturelle@paris.fr](mailto:carnavalet.actionculturelle@paris.fr)

**Atelier des Lumières (Mo)** 📍 38 rue Saint-Maur (11th) ☎️ 01 80 98 46 00 ● [message@atelier-lumieres.com](mailto:message@atelier-lumieres.com)

**Basilique Cathédrale de Saint-Denis (A, Me, Mo except chevet, V)** 📍 1 rue de la Légion d'Honneur – Saint-Denis (93) ☎️ 01 48 09 83 54 ● [www.saint-denis-basilique.fr](http://www.saint-denis-basilique.fr) (contact form)

**Basilique du Sacré-Cœur (Mo)** 📍 35 rue du Chevalier de la Barre (18th) ☎️ 01 53 41 89 00

**Cathédrale Notre-Dame de Paris (A, Me, Mo except towers, V)** 📍 6 parvis Notre-Dame – Place Jean-Paul II (4th) ☎️ 01 42 34 56 10 ● [www.notredamedeparis.fr](http://www.notredamedeparis.fr) (contact form)

**Centre Pompidou (A, Me, Mo, V)** 📍 Place Georges Pompidou (4th) ● [www.handicap.centrepompidou.fr](http://www.handicap.centrepompidou.fr) (contact form)

**Chapelle Expiatoire (A, Me, V)** 📍 29 rue Pasquier (8th) ☎️ 01 42 65 35 80 ● [www.chapelle-expiatoire-paris.fr](http://www.chapelle-expiatoire-paris.fr) (contact form)

**Château de Vincennes (A, Me, Mo partially, V)** 📍 Avenue de Paris – Vincennes (94) ☎️ 01 48 08 31 20 ● [www.chateau-de-vincennes.fr](http://www.chateau-de-vincennes.fr) (contact form)

**Cinémathèque Française (A, Me, Mo, V)** 📍 51 rue de Bercy (12th) ☎️ 01 71 19 33 33 ● [accessibilite@cinematheque.fr](mailto:accessibilite@cinematheque.fr)

**Cité de l'Architecture & du Patrimoine (A, Me, Mo, V)** 📍 1 place du Trocadéro et du 11 Novembre (16th) ☎️ 01 58 51 52 00 ● [www.citedelarchitecture.fr](http://www.citedelarchitecture.fr) (contact form)

**Cité des Sciences et de l'Industrie (A, Me, Mo, V)** 📍30 avenue Corentin Cariou (19th) ☎️01 40 05 70 86  
● info.handicap@universcience.fr

**Conciergerie (A, Me, V)** 📍2 boulevard du Palais (1st) ☎️01 53 40 60 80 ● www.paris-conciergerie.fr  
(contact form)

**Eiffel Tower (Mo 1st and 2nd floors)** 📍5 avenue Anatole France – Champ de Mars (7th)  
☎️0 892 70 12 39 (€0.35/min) ● www.tou Eiffel.paris/fr (contact form)

**Fondation Cartier pour l'Art Contemporain (Mo)** 📍261 boulevard Raspail (14th) ☎️01 42 18 56 50  
● info.reservation@fondation.cartier.com

**Fondation Louis Vuitton (A, Me, Mo, V)** 📍Bois de Boulogne – 8 avenue du Mahatma Gandhi (16th)  
☎️01 40 69 96 00 ● contact@fondationlouisvuitton.fr

**Grand Palais (A, Mo, V)** 📍Avenue du Général Eisenhower – Avenue Winston Churchill (8th) ☎️01 44 13 17 17  
● information.gngp@rmn.fr

**Grévin Paris (Mo)** 📍10 boulevard Montmartre (9th) ☎️01 47 70 85 05 ● contact@grevin.com

**Institut du Monde Arabe (Mo)** 📍1 rue des Fossés Saint-Bernard – Place Mohammed V (5th) ☎️01 40 51 38 38  
● informations@imarabe.org

**MAC VAL – Musée d'Art Contemporain du Val-de-Marne (A, Me, Mo, V)**  
📍Place de la Libération – Vitry-sur-Seine (94) ☎️01 43 91 64 23 ● reservation@macval.fr

**MAD – Musée des Arts décoratifs (A, Me, Mo, V)** 📍107 rue de Rivoli (1st) ☎️01 44 55 57 50  
● adac@madparis.fr

**MAD – Musée Nissim de Camondo (A, Me, Mo on the ground floor, V)**  
📍63 rue de Monceau (8th) ☎️01 53 89 06 50 ● adac@madparis.fr

**Maison de Victor Hugo (A, Me, Mo, V)** 📍6 place des Vosges (4th) ☎️01 42 72 10 16  
● www.maisonsvictorhugo.paris.fr (contact form)

**Mémorial de la Shoah – Paris (Mo)** 📍17 rue Geoffroy l'Asnier (4th) ☎️01 42 77 44 72  
● contact@memorialdelashoah.org

**Monnaie de Paris (A, Me, Mo, V)** 📍11 quai de Conti (6th) ☎️01 40 46 56 66 ● billetterie@monnaieparis.fr

**Musée d'Art et d'Histoire du Judaïsme (A, Me, Mo, V)** 📍71 rue du Temple (3rd) ☎️01 53 01 86 60  
● handicaps@mahj.org

**Musée d'Orsay (A, Me, Mo)** 📍1 rue de la Légion d'Honneur (7th) ☎️01 40 49 48 14 ● www.musee-orsay.fr  
(contact form)

**Musée de Cluny – Le monde médiéval (A, V)** 📍6 place Paul Painlevé (5th) ☎️01 53 73 78 00  
● contact.musee-moyenage@culture.gouv.fr



© Fondation Cartier/Luc Boegly



© Musée d'Orsay/Sophie Boegly



© PCVB/Daniël Thierry



© Musée Picasso / Fabien Campoverde



© MNHN / Bruno Jay



© PCVB / David Lefranc

**Musée de l'Air et de l'Espace (A, Me, Mo except exhibition aircraft, V)** 📍Aéroport de Paris – Le Bourget – Le Bourget (93) ☎️ 01 49 92 70 00 ● www.museeairespace.fr (contact form)

**Musée de l'Orangerie (A, Me, Mo, V)** 📍Tuileries gardens (1st) ☎️ 01 44 77 80 07  
● accessibilite-orangerie@musee-orangerie.fr

**Musée de la Vie Romantique (Me, Mo partially, V)** 📍16 rue Chaptal (9th) ☎️ 01 55 31 95 67  
● reservations.museevieromantique@paris.fr

**Musée des Arts et Métiers (A, Me, Mo, V)** 📍60 rue Réaumur (3rd) ☎️ 01 53 01 82 89 ● www.arts-et-metiers.net (contact form)

**Musée du Louvre (A, Me, Mo, V)** 📍Main entrance via the Pyramide (1st) ☎️ 01 40 20 59 90  
● handicap@louvre.fr

**Musée du Quai Branly – Jacques Chirac (A, Me, Mo, V)** 📍37 quai Branly (7th) ☎️ 01 56 61 70 00  
● accessibilite@quaiبرانلي.fr

**Musée du Vin Paris (Mo)** 📍5 square Charles Dickens (16th) ☎️ 01 45 25 70 89 ● info@museeduvinparis.com

**Musée National de l'Histoire de l'Immigration (Mo)** 📍Palais de la Porte dorée – 293 avenue Daumesnil (12th)  
☎️ 01 53 59 64 30 ● reservation@palais-portedoree.fr

**Musée National des Arts Asiatiques – Guimet/MNAAG (A, Me, Mo, V)** 📍6 place d'Iéna (16th)  
☎️ 01 56 52 54 33 ● contact@guimet.fr

**Musée National Eugène Delacroix (A, Mo partially)** 📍6 rue de Furstemberg (6th) ☎️ 01 44 41 86 50  
● www.musee-delacroix.fr (contact form)

**Musée National Picasso – Paris (A, Me, Mo, V)** 📍5 rue de Thorigny (3rd) ☎️ 01 85 56 00 36  
● accessibilite@museepicassoparis.fr

**Musée Rodin (A, Me, Mo, V)** 📍79 rue de Varenne (7th) ☎️ 01 44 18 61 85 ● bouillo@musee-rodin.fr

**Musée Zadkine (A, Me, Mo, V)** 📍100 bis rue d'Assas (6th) ☎️ 01 55 42 77 20 ● musee.zadkine@paris.fr

**Muséum National d'Histoire Naturelle – Grande Galerie de l'Évolution et Galerie des Enfants (A, Me, Mo, V)**  
📍36 rue Geoffroy Saint-Hilaire (5th) ☎️ 01 40 79 56 01 ● info-accessibilite@mnhn.fr

**Palais de Tokyo (A, Me, Mo, V)** 📍13 avenue du Président Wilson (16th) ☎️ 01 81 97 35 88  
● accueil@palaisdetokyo.com

**Palais Galliera – Musée de la Mode de la Ville de Paris (A, Me, Mo, V)** 📍10 avenue Pierre I<sup>er</sup> de Serbie (16th)  
☎️ 01 56 52 86 00 (motor disability) or 01 56 52 86 20 (visual or mental impairment)  
● www.palaisgalliera.paris.fr (contact form)

**Palais Garnier – Opéra National de Paris (Mo)** 📍Place de l'Opéra (9th) ☎️ 0 892 89 90 90 (€0.35/min)  
for visits; 01 40 01 80 53 and ● accessibilite@operadeparis.fr for performances (also in audio description)

**Panthéon (A, Me, V)** 📍Place du Panthéon (5th) ☎️ 01 44 32 18 00 ● www.paris-pantheon.fr (contact form)

**Philharmonie de Paris (A, Me, Mo, V)** 📍 221 avenue Jean Jaurès (19th) 📞 01 44 84 44 84

● handicap@philharmoniedeparis.fr

**Sainte-Chapelle (A, Me, Mo with assistance, V)** 📍 8 boulevard du Palais (1st) 📞 01 53 40 60 80

● www.sainte-chapelle.fr (contact form)

**Sèvres – Cité de la Céramique (A, Me, Mo, V)** 📍 2 place de la Manufacture – Sèvres (92) 📞 01 46 29 22 00

● info@sevresciteceramique.fr

## IN THE PARIS REGION

---

**Château de Champs-sur-Marne (A, Mo)** 📍 31 rue de Paris – Champs-sur-Marne (77) 📞 01 64 62 74 42

● www.chateau-champs-sur-marne.fr (contact form)

**Château de Chantilly (Mo partially)** 📍 Chantilly (60) 📞 03 44 27 31 80 ● reservations@domainedechantilly.com

**Château de Fontainebleau (A, Mo except Musée Napoléon, V)** 📍 Fontainebleau (77) 📞 01 60 71 50 70

● billetterie@chateaufontainebleau.fr

**Château de Maisons (A, Me, V)** 📍 2 avenue Carnot – Maisons-Laffitte (78) 📞 01 39 62 01 49

● www.chateau-maisons.fr (contact form)

**Musée de la Grande Guerre – Pays de Meaux (A, Me, Mo, V)** 📍 Rue Lazare Ponticelli – Meaux (77)

📞 01 83 69 05 76 ● handicap.m2g@meaux.fr

**Musée de Préhistoire d'Île-de-France (A, Me, Mo, V)** 📍 48 avenue Étienne Dailly – Nemours (77)

📞 01 64 78 41 85 ● www.musee-prehistoire-idf.fr/contact-visiteurs-handicapes (contact form)

**Musée des Impressionnistes Giverny (A, Mo, V)** 📍 99 rue Claude Monet – Giverny (27) 📞 02 32 51 94 65

● contact@mdig.fr

**Musée National de la Renaissance – Château d'Écouen (A, Me, Mo, V)** 📍 Rue Jean Bullant – Écouen (95)

📞 01 34 38 38 50 ● accueil.musee-renaissance@culture.gouv.fr

**Palace of Versailles (A, Me, Mo, V)** 📍 Place d'Armes – Versailles (78) 📞 01 30 83 75 05

● versaillespourtous@chateauversailles.fr

## FREE ADMISSION AND REDUCTIONS

---

Each cultural or leisure venue is free to decide its own policy in terms of free admission, reductions, and priority access for people with disabilities and the person accompanying them. Where admission is free or where there is a reduction, **documentary evidence** may be requested, such as **the Carte Mobilité Inclusion, the European Parking Card**, a disability document issued by your country, or a medical certificate (preferably written in French or in English) dated within 3 months of the time of your visit.

FIND  
OUT  
MORE

To select the place that you wish to visit, we invite you to use the advanced search option on PARISINFO.com, rubric 'What to see'. Choose the criteria that interest you: location, services, type of disability.



## • OUTINGS IN PARIS

**Feel like going on a cruise, a coach tour or a mini-train ride?** There are plenty of ideas for sight-seeing trips in the capital.

### BOAT TRIPS ON THE SEINE

---

Admire the majority of Paris's top monuments from the River Seine: the Eiffel Tower, the Grand Palais, the Orsay and Louvre museums, Notre-Dame Cathedral, the Hôtel de Ville (City Hall) ...

**Bateaux-Mouches** 📍 Port de la Conférence – Pont de l'Alma – Rive Droite (8th) ☎️ 01 42 25 96 10

● info@bateaux-mouches.fr

Pier with accessible toilet facilities; boats with removable ramp, accessible to all types of mobility devices (including scooters for people with reduced mobility); group of people in wheelchairs possible.

**Bateaux Parisiens** 📍 Port de la Bourdonnais (7th) ☎️ 0 825 01 01 01 (€0.15/min)

● reservation@bateauxparisiens.com

Pier Port de la Bourdonnais with accessible toilet facilities; boats *Pierre Bellon*, *Juliette Gréco* and *Brigitte Bardot* with ground-level access and accessible toilet facilities; audio guides available on the *Pierre Bellon* compatible with magnetic loop hearing aids.

**Vedettes de Paris** 📍 Port de Suffren (7th) ☎️ 01 44 18 19 50 ● billetterie@vedettesdeparis.com

Pier with accessible toilet facilities; boats accessible to people in manual wheelchairs able to transfer with an accompanying person; *Paris Étoile*, *Paris Léna* and *Paris Trocadéro* boats equipped with accessible toilet facilities.

### GUIDED TOURS IN PARIS

---

#### BY BUS

**Big Bus Paris** 📍 17 quai de Grenelle (15th) ☎️ 01 53 95 39 53 ● www.bigbustours.com (contact form)

A part of the bus fleet is equipped with an access ramp and a reserved place on the lower deck.

**City Sightseeing Paris** 📍 9 avenue de l'Opéra (1st) ☎️ 01 40 15 03 61 ● louis@cssp.fr

All buses are equipped with an access ramp and a reserved place on the lower deck.

**Foxity** 📍 5 avenue de l'Opéra (1st) ☎️ 01 42 96 07 97 ● info@foxity.fr

All buses are equipped with an access ramp and a reserved place on the lower deck.

**Open Tour** 📍 13 rue Auber (9th) ☎️ 01 42 66 56 56 ● www.paris.opentour.com (contact form)

A part of the bus fleet is equipped with an access ramp and a reserved place on the lower deck.



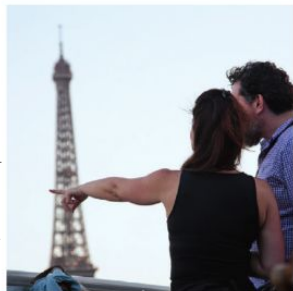
## BY LITTLE TRAIN

**Another Paris – Le petit train bleu** 📍 Rue de l'Amiral de Coligny (1st) or 9 rue Lagrange (5th), according to the itinerary chosen 📞 06 31 99 29 38 ● [accessibilite@another-paris.com](mailto:accessibilite@another-paris.com)

Another Paris has obtained the State approved quality rating Tourisme & Handicap for the four major types of disability.

## ON FOOT

Contact the following tour guides and greeters and tell them your requirements:



© PCVB/Amélie Dupont

**Avec les yeux de Julie** 📞 06 61 77 13 21 ● [aveclesyeuxdejulie@gmail.com](mailto:aveclesyeuxdejulie@gmail.com)

**Francine Chuard** 📞 06 89 33 64 16

**Paris est une scène** 📞 06 88 57 85 31 ● [contact@paris-scene.com](mailto:contact@paris-scene.com)

**Veronica Antonelli** 📞 06 21 72 90 85 ● [verantonelli@me.com](mailto:verantonelli@me.com)

**With'art** 📞 06 30 25 17 92 ● [withart.paris@gmail.com](mailto:withart.paris@gmail.com)

**Art.Cadia** 📞 06 77 85 95 51 ● [art.cadia@live.fr](mailto:art.cadia@live.fr)

**Bleu comme une orange** 📞 01 42 28 17 15 ● [bcuo@orange.fr](mailto:bcuo@orange.fr)

**Comprendre Paris en marchant** 📞 06 07 59 55 58

● [comprendreparisenmarchant@gmail.com](mailto:comprendreparisenmarchant@gmail.com)

**Flashguide-Paris** 📞 06 07 99 49 13 ● [flashguide.paris@yahoo.fr](mailto:flashguide.paris@yahoo.fr)

**Les PEP 75** 📞 01 47 34 00 10 ● [contact@pep75.org](mailto:contact@pep75.org)

**Paris on Wheels** 📞 06 68 23 74 38 ● [www.parisonwheels.com](http://www.parisonwheels.com) (contact form)

**Paris-visiteguidee** 📞 06 76 66 73 81 or 06 32 25 68 26 ● [www.paris-visiteguidee.fr](http://www.paris-visiteguidee.fr) (contact form)

**Parisien d'un jour** ● [www.greeters.paris](http://www.greeters.paris) (contact form)

## SOMETHING DIFFERENT: GET UP IN THE AIR

Enjoy a unique experience by climbing aboard the biggest air balloon in the world and admiring Paris from a height of 150 m. As the Ballon de Paris Generali rides are subject to meteorological conditions, it is best to book on the same day.

**Ballon de Paris Generali** 📍 Parc André Citroën – 2 rue de la Montagne de la Fage (15th) 📞 01 44 26 20 00

● [www.ballondeparis.com](http://www.ballondeparis.com) (contact form)

## OUTINGS IN PARKS, GARDENS AND WOODS

With some **450 green spaces**, Paris is a great place for a relaxing stroll. Choose your style of park or garden: French-style at the Tuileries Gardens (1st) or Luxembourg Gardens (6th), English-style at the Parc des Buttes Chaumont (19th), Parc Montsouris (14th) or Parc Monceau (17th), or Japanese at the Parc de Bercy (12th). Visitors in wheelchairs: we advise you to be accompanied as some surfaces are soft or have big differences in level. At several metres above the streets, the Coulée Verte René Dumont (12th) is a green itinerary more than 4.5 km in length on a former converted railway track (wheelchair access by Rue Jacques Hillairet). In the Bois de Boulogne and the Bois de Vincennes, Escapade Liberté Mobilité offers outings in off-road electric vehicles that do not require transfer from the user's wheelchair.

**Escapade Liberté Mobilité** 📞 01 42 88 84 06 ● [info@escapade.asso.fr](mailto:info@escapade.asso.fr)



## ● ENTERTAINMENT AND LEISURE IN PARIS

**There is always something to do in Paris.** The French capital is packed with entertainment venues and great places to shop!

### THEATRES, CINEMAS, CABARETS

**Accès Culture** makes it possible for people with visual and hearing impairments to discover live shows in more than 100 theatres in France. Search for a show by type of adaptation and by venue ● <http://accessculture.org>. Film buffs: Paris has more than **400 cinema screens!** Foreign films are available in their original version with French subtitles. UGC, Gaumont Pathé and MK2 cinemas also screen films in French with French subtitles.

The association **Ciné-ma différence** organizes film screenings for people who are autistic or who have associated behavioural disorders (Chaplin Denfert and Majestic Passy cinemas).

**Ciné-ma différence** ☎ 01 71 20 22 64 ● [contact@cinemadifference.com](mailto:contact@cinemadifference.com)

And Paris would not be Paris without its famous cabarets!

**Crazy Horse Paris** 📍 12 avenue George V (8th) ☎ 01 47 23 32 32 ● [reservation@lecrazyhorseparis.com](mailto:reservation@lecrazyhorseparis.com)

**Lido de Paris** 📍 116 bis avenue des Champs-Élysées (8th) ☎ 01 40 76 56 10 ● [reservation@lido.fr](mailto:reservation@lido.fr)

**Paradis Latin** 📍 28 rue du Cardinal Lemoine (5th) ☎ 01 43 25 28 28 ● [paradislatin@paradislatin.com](mailto:paradislatin@paradislatin.com)

### SHOPPING

Parisian department stores and shopping centres make accessibility a priority:

**Beaugrenelle Paris** 📍 12 rue Linois (15th) ☎ 01 53 95 24 00 ● [contact@beaugrenelle-paris.com](mailto:contact@beaugrenelle-paris.com)

**Bercy Village** 📍 Cour Saint-Émilien (12th) ☎ 0 825 166 075 (€0.18/min)

**Carrousel du Louvre** 📍 99 rue de Rivoli (1st) ☎ 01 43 16 47 10 ● [www.carrouseldulouvre.com](http://www.carrouseldulouvre.com) (contact form)

**Forum des Halles** 📍 101 porte Berger (1st) ☎ 01 44 76 87 08 ● [www.forumdeshalles.com](http://www.forumdeshalles.com) (contact form)

**Galleries Lafayette Paris Haussmann** 📍 40 boulevard Haussmann (9th) ☎ 01 42 82 34 56

● <https://haussmann.gallerieslafayette.com> (contact form)

**La Vallée Village** 📍 Serris (77) ☎ 01 60 42 35 00 ● [lavalleeillage@lavalleeillage.com](mailto:lavalleeillage@lavalleeillage.com)

**Le BHV Marais** 📍 52 rue de Rivoli (4th) ☎ 09 77 401 400 ● [www.bhv.fr](http://www.bhv.fr) (contact form)

**One Nation Paris** 📍 Les Clayes-sous-Bois (78) ☎ 01 72 87 90 11 ● [www.onenation.fr](http://www.onenation.fr) (contact form)

**Printemps Paris Haussmann** 📍 64 boulevard Haussmann (9th) ☎ 01 42 82 50 00 ● [www.printemps.com](http://www.printemps.com) (contact form)

## THEME PARKS, ZOOS, EXPERIENCES

---

Numerous leisure attractions are accessible to people with disabilities:

**Aquarium de Paris** 📍 5 avenue Albert de Mun (16th) 📞 01 40 69 23 23 ● info@cineaqua.com

**Disneyland® Paris** 📍 Marne-la-Vallée (77) 📞 0 825 300 500 (€0.15/min)

● <https://idf-my-disneyland.disneylandparis.fr> (contact form)

**FlyView Paris** 📍 30 rue du 4 Septembre (2nd) 📞 01 83 62 12 36 ● www.flyview360.com (contact form)

**iFly Paris** 📍 30 avenue Corentin Cariou – Vill'Up at La Villette (19th) ● info.paris@iflyworld.com

**Le Jardin d'Acclimatation** 📍 Bois de Boulogne (16th) 📞 01 40 67 90 85 ● www.jardindacclimatation.fr (contact form)

**Parc Astérix** 📍 Plailly (60) 📞 0 826 46 66 26 (€0.15/min) ● www.parcasterix.fr (contact form)

**Parc Zoologique de Paris** 📍 Avenue Daumesnil (12th) 📞 0 811 224 122 (€0.06/min)

● www.parczoologiqueparis.fr (contact form)

**Ménagerie du Jardin des Plantes** 📍 57 rue Cuvier (5th) 📞 01 40 79 56 01 ● valhuber@mnhn.fr

## CAFES, TEA ROOMS, BARS, CLUBS ...

---

Paris offers you plenty of places for fun and relaxation:

**Faust (bar, restaurant and club)** 📍 Pont Alexandre III (7th) 📞 01 44 18 60 60 ● contact@faustparis.fr

**Hard Rock Café (bar and restaurant)** 📍 14 boulevard Montmartre (9th) 📞 01 53 24 60 00

● paris\_sales5@hardrock.com

**La Bellevilloise (restaurant, concert and exhibition rooms, club)** 📍 19-21 rue Boyer (20th) 📞 01 46 36 07 07

● resa@labellevilloise.com

**Ladurée Paris Champs-Élysées (tea room)** 📍 75 avenue des Champs-Élysées (8th) 📞 01 40 75 08 75

● contact@laduree.com

**Ladurée Paris Royale (tea room)** 📍 16 rue Royale (8th) 📞 01 42 60 21 79 ● contact@laduree.com

**Rosa Bonheur sur Seine (guinguette bar)** 📍 Port des Invalides (7th) ● info@rosabonheursurseine.fr

**BAM Richer (karaoke bar)** 📍 30 rue Richer (9th) 📞 01 48 00 94 65

**Les 4 éléments (bar)** 📍 149 rue Amelot (11th) 📞 01 47 00 34 11 ● contact@bar4elements.com (Air space not accessible to people in wheelchairs)

All the major **concert halls** in and around Paris are accessible: AccorHotels Arena, Paris La Défense Arena, Philharmonie de Paris, La Seine Musicale, Palais des Congrès de Paris, L'Olympia, Zénith Paris – La Villette ...

**NB:** the major-domo Wilson provides you with lots of ideas for accessible outings and accessible nearby toilet facilities (conversational robot on Messenger, in French only).

FIND  
OUT  
MORE



To select the place that you wish to go out to, we invite you to use the advanced search option on PARISINFO.com, rubric 'Going out'. Choose the criteria that interest you: location, type of place, services, disability.



## ● MAKING YOUR TRIP EASY

### PARIS TOURIST OFFICE

Come and meet us at one of our information points, our tourist information staff are available to give you information and advice and reply to your questions.

#### Main information point – Hôtel de Ville

📍 29 rue de Rivoli (4th).

▶ M° Hôtel de Ville, Châtelet.

🕒 Daily, except 1 May.

From 2 May to 31 October: 9am to 7pm

(last admission 6.45pm).

From 1 November to 30 April: 10am-7pm

(last admission at 6.45pm).

Free Wi-Fi.

#### Gare du Nord

📍 18 rue de Dunkerque (10th).

▶ M°, RER and trains Gare du Nord.

🕒 Daily, 8.30am-6.30pm, except 1 January, 1 May, 25 December.

### REQUEST THE SERVICES OF A TRAVEL AGENT

If you would like help in planning your stay in Paris, or, for any specific visit requests, you can call on the services of an inbound travel agency specializing in services for visitors with disabilities.

**Be Handi** 📍 18 route de Mézières – 41240 Ouzouer-le-Marché ☎️ 06 04 53 56 18 ● info@behandi.fr

**AADSP Voyages** 📍 Placette du 8 mai 1945 – 95490 Vauréal ☎️ 01 34 220 244 ● contact@aadsp.fr

**Access Tourisme Service** 📍 24 rue du 11 Novembre – 45130 Charsonville ☎️ 02 38 74 28 40

● access.tourisme.service@wanadoo.fr

**Yoola** 📍 90 rue du Moulin Vert (14th) ☎️ 01 83 64 70 06 ● info@yoola.fr

If you would like someone to accompany you during your stay, Handi'TourGuide provides assistance in your daily life (except medical care), your travel, and your leisure and cultural outings.

**Handi'TourGuide** ☎️ 06 74 07 58 75 ● marie@handitourguide.com

## RENTAL OF MEDICAL EQUIPMENT

---

If you wish to rent a wheelchair, or any other specific equipment during your stay in Paris, see our website [PARISINFO.com](http://PARISINFO.com), rubric 'Practical Paris', under the rubric 'Visiting Paris with a disability', where you will find a dozen or so suppliers, some of them also speaking English, including:

**Mobilité Services** 📍 100 boulevard Voltaire (11th) 📞 01 43 57 69 33 ● [info@mobilite-services.fr](mailto:info@mobilite-services.fr)

**Pharmacie Bader** 📍 10-12 boulevard Saint-Michel (6th) 📞 01 43 26 92 66 ● [pharmabader@wanadoo.fr](mailto:pharmabader@wanadoo.fr)

**Pharmacie Paris – Charonne** 📍 136 rue de Charonne (11th) 📞 01 43 71 09 56

● [contact@pharmacieparischaronne.com](mailto:contact@pharmacieparischaronne.com)

If you have French nationality, all you need is a medical prescription to be reimbursed for the cost of renting equipment. If you are a European citizen, you must also show your European health insurance card. Visitors from outside the European Union should check to see whether their country has signed a social security agreement with France. If this type of rental service is covered by your personal social security, your expenses will be reimbursed on your return.

## FINDING ACCESSIBLE PUBLIC TOILETS

---

More than 400 'sanisettes' (public toilets), which are hygienic, safe, comfortable, free and ecological are accessible to people with disabilities in Paris. They are adapted for wheelchair users (transfer bar), and they have recorded information and information in braille for blind or sight-impaired people. To locate the sanisettes along your route, enter 'sanisettes' in the search engine of ● [www.paris.fr](http://www.paris.fr).

## CROSSING ROADS

---

The pavements at pedestrian crossings are lowered or the road is elevated in order to make it easier for wheelchair users to cross roads. For blind and sight-impaired people, there are tactile and audio safety features at traffic lights.

## USEFUL NUMBERS

---

In the event of the loss or theft of your personal identity papers, report the incident at the nearest police station, making sure that you keep the receipt given to you, for any subsequent proceedings relating to the event. To find the nearest police station:

**Préfecture de police** 📞 34 30 (€0.06/min) ● [www.prefecturedepolice.interieur.gouv.fr](http://www.prefecturedepolice.interieur.gouv.fr)

To cancel your banker's card or cheque book:

**Banker's cards** 📞 0 892 705 705 (€0.35/min) / **American Express card** 📞 01 47 77 72 00 / **Cheque books**

📞 0 892 683 208 (€0.35/min)

To contact the emergency services:

**European emergency number** 📞 112 / Emergency number accessible by SMS or fax 📞 114 (for people with hearing or speaking difficulties)

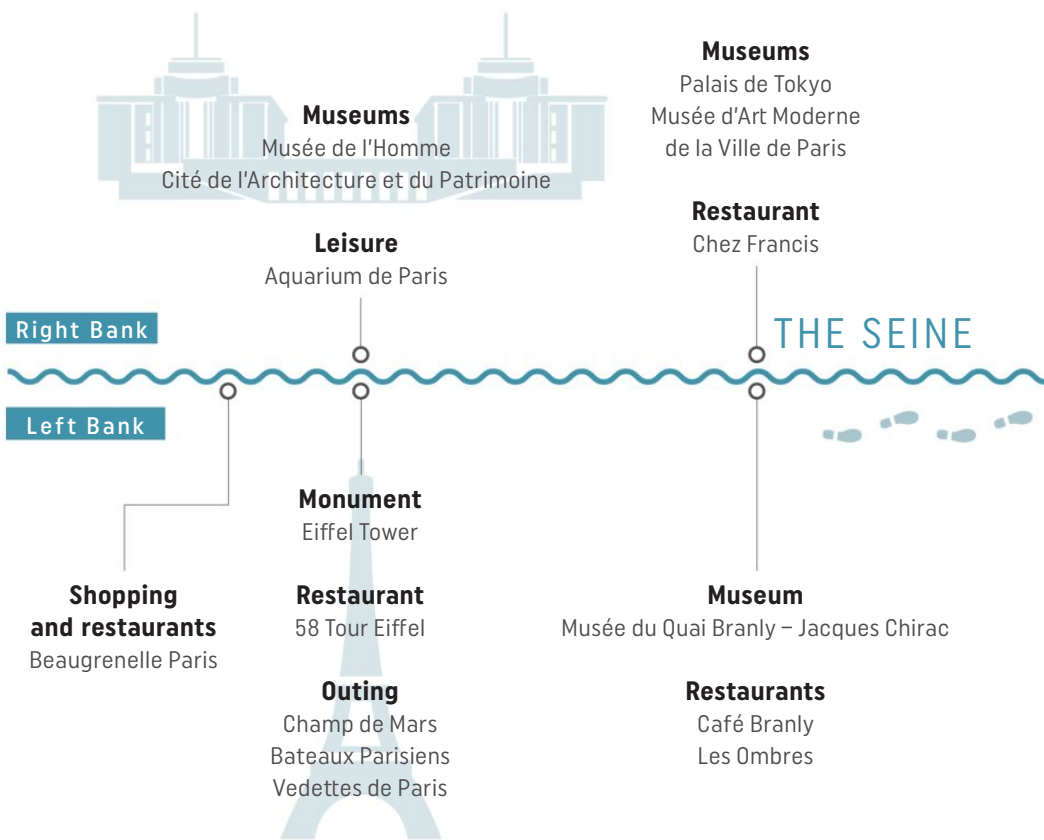
**SAMU** (emergency medical service) 📞 15 / **Police-Emergency** 📞 17 / **Fire service** 📞 18



# • A PROMENADE ALONG THE BANKS OF THE SEINE

© PCVB/Marc Bertrand

**Bus line 72** (on this route, stations 'Pyramides – Tuileries',



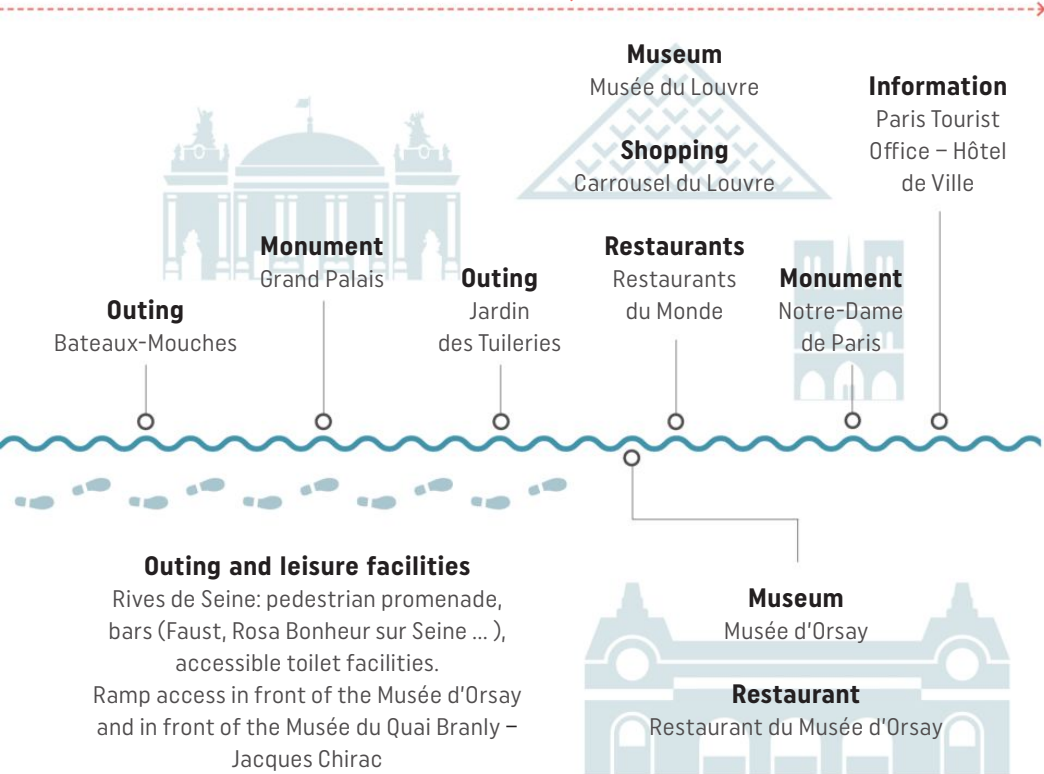
**Bus line 42**

(on this route, stations 'Dupleix' direction east-west and 'Tour Eiffel' direction west-east not accessible)



**This itinerary along the Seine will lead you to some of the finest museums and monuments in Paris**, parks and gardens to relax in and great places to eat at and shop at. To enjoy the proximity of the water, greenery and tranquillity right in the heart of Paris, take the Rives de Seine. On this stretch reserved for pedestrians, cyclists, and rollerblade fans, you'll find cafes, floating gardens, fun activities and accessible toilet facilities.

'Louvre – Rivoli' and 'Hôtel de Ville' not accessible)



**Bus line 63**

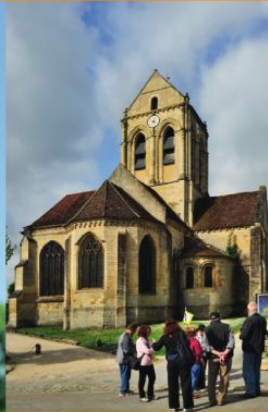
(on this route, station 'Jean Nicot – Église Américaine' direction east-west not accessible)

**Bus line 24**

(on this route, station 'Pont-Neuf – Quai des Grands Augustins' not accessible)



# Paris Region A WORLDWIDE DESTINATION FOR ALL



[www.visitparisregion.com](http://www.visitparisregion.com)

