

**Goals :** organize and manage project's activities and resources

- give an overview of the project schedule in real time



- help project managers organization and report of technical & financial resources and collaborator's level of involvement



- provides decision-making support to project management (in order to meet deadlines) and allow EU to follow the project (indicators).



**Goals :** organize and manage project's activities and resources

## Requirements

- give an overview of the project schedule in real time

→ **display, kind of system, access rights...**

- help project managers organization and report of technical & financial resources and collaborator's level of involvement

→ **≠ user type, consistency of multiple projects...**

- provides decision-making support to project management (in order to meet deadlines) and allow EU to follow the project (indicators).

→ **custom dashboards, alerts...**



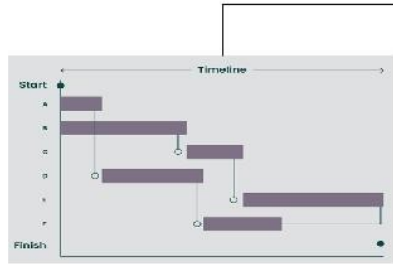
## Requirements

Consolidation of the overall the project schedule

ID	Task	Apr	Mar	Jun	Jul	Aug	Sep	Oct	Nov	Dec	Jan	Feb	Mar	
1.	Vision & Strategy	[Bar chart showing task duration]												
2.	Company Incorporation & Initial Funding	[Bar chart showing task duration]												
3.	Consider LIMAs IP	[Bar chart showing task duration]												
4.	Market Research 1	[Bar chart showing task duration]												
5.	Initial Marketing up to ALCAS open day	[Bar chart showing task duration]												
6.	2 <sup>nd</sup> Stage Marketing including LVMC	[Bar chart showing task duration]												
7.	Plan Marketing Strategy	[Bar chart showing task duration]												
8.	Costing of Services	[Bar chart showing task duration]												
9.	Initial Cash Flow Analysis - BP1	[Bar chart showing task duration]												
10.	Market Research 2	[Bar chart showing task duration]												
11.	Investigate Sources of Funding	[Bar chart showing task duration]												
12.	Detailed Cash Flow, Profit & Loss etc. - BP2	[Bar chart showing task duration]												
13.	Finalize Plan with Key Stake Holders	[Bar chart showing task duration]												
14.	Apply for Funding	[Bar chart showing task duration]												

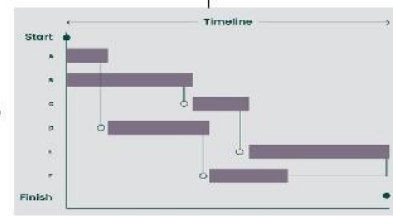
Schedule admin

ET Management  
ET Collaboration  
National Agencies



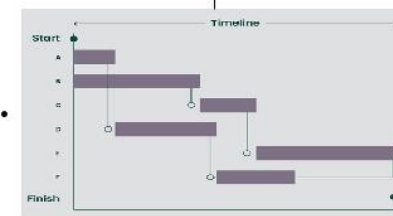
Sub Project 1 Schedule

Project Manager 1



Sub Project 99 Schedule

Project Manager 99



Sub Project 200 Schedule

Project Manager 200

## Requirements

### Display

- ✓ visualization : Gantt, critical path, tasks manager, alerts...
- ✓ reporting : dashboard, indicators

### collaborative

- ✓ online solution
- ✓ ~200 project managers in charge of the different sub-projects
- ✓ ~1300 scientists as viewers only
- ✓ sub-project schedule validation process
- ✓ schedule auto-consolidation update

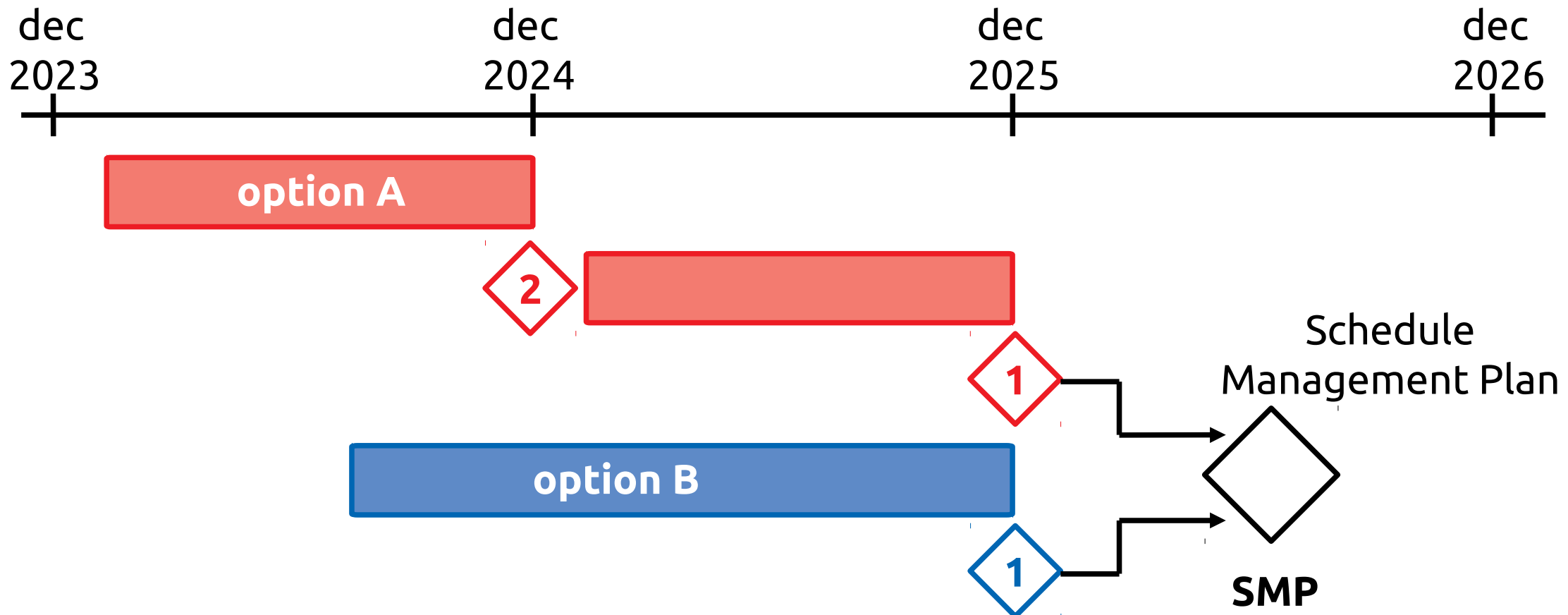
### financial & legal standards

- ✓ costs traceability & distribution
- ✓ in-kind costs
- ✓ EU laws agreement
- ✓ data back-up & sustainability  
(> few decades provider failure, hacking...)

## 2 options for the tools

**option A:** specific software

**option B:** integrated in PLM software  
(Product Lifetime Management)



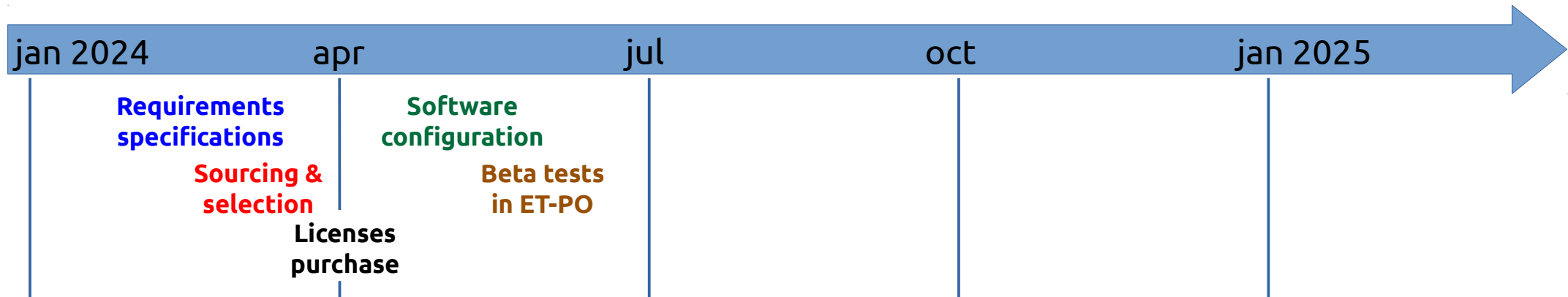
## Requirements vs candidates : few softwares met all criteria (5/13)

ET analyse for Schedule specific tools													
	JIRA	MS Project Server	ORACLE Primavera	Easyredmine	ClickUp	Project Libre	Monday	Beesbusy	BaseCamp	Projector	Trello	Assana	Gantt Chart Viewer
Compliance with all requirements	YES	YES	YES	YES	YES	NO	NO	NO	NO	NO	NO	NO	NO
If partial, comments							No critical path No	No critical path No	No critical path No	Standalone licen	No critical path No	No critical path No	Closed in 2022
If No, comments													
Price for 200 sub-system manager		11 K€/year University tender	?	36 K€/year	84 K€/year	24 K€/year							
Price for 1300 viewers	an ET users Premium141K\$/y Enterpri. 221K\$/y	0 K€/year University tender	?	78 K€/year	0 K€/year	?? K€/year							
Total price for 1500 users	141 000 \$	213 000 €		114 000 €	84 000 €								
Tool year creation	2002	1984	?	2001	2017	2012	2012	2014					Close 2022
Market share in %	22,90 %	9 %	?		N/A		3,00 %						
Annual Revenue	3.9 B \$		?	> 50M€	\$200 Millions/Year		>250M€						
Number of project users	65000+ companies		?	300 000	10 millions								
Support, Training		YES	?	YES	YES								
Customize Dashboards and indicators	YES	YES	YES	YES	YES	YES	NO	NO	NO	NO	YES	YES	
Test in progress		YES	?	YES	YES	NO	YES	YES	YES	YES	YES	YES	
Extension plugin	YES		?	YES	YES	NO	NO	NO	NO	NO	NO	NO	
Extra plugin	Risk		?	Risk	Documents/free								
Extra plugin	Documents			Knowledge	whiteboard/free								
Extra plugin				Documents	AI/paid								
visualization(Gant, Kanban...)	YES	YES	YES	YES	YES	YES	YES	YES	YES	YES	YES	YES	
critical path	YES with AddOn	YES	YES	YES	YES	YES	NO	NO	NO	YES	NO	NO	
tasks manager (tasks association, indicators...)	YES	YES	YES	YES	YES	YES	YES	YES	YES	YES	YES	YES	
reporting (dashboard, indicators...)	YES	YES	YES	YES	YES	YES	YES	YES	YES	YES	YES	YES	
cloud storage	YES	YES	YES	YES	YES	YES	YES	YES	YES	YES	YES	YES	
full right mode (~200 users)	YES	YES	YES	YES	YES	YES	YES	YES	YES	YES	YES	YES	
read-only mode(~ 1300 users)	YES	YES	?	YES	YES	YES	NO	YES	YES	NO	NO	NO	
subproject schedule validation process	YES	YES	YES	YES	YES with	YES	NO	NO	NO	NO	NO	NO	
schedule autoconsolidation update	YES	YES	?	YES	YES	YES	NO	NO	NO	NO	NO	NO	
software compatibility	YES	YES	YES	YES	YES	YES	YES	YES	YES	YES	YES	YES	
costs (traceability & distribution)	YES with AddOn	YES	YES	YES	YES	YES	NO	NO	NO	NO	NO	NO	
in-kind costs	YES with AddOn	YES	YES	YES	YES	YES	YES	NO	YES	NO	YES	YES	
EU laws agreement	YES	YES	YES	YES	YES	YES	NO	YES	YES	YES	YES	YES	
data (back-up & sustainability)	YES	YES	YES	YES	YES	YES	NO	YES	YES	NO	YES	YES	



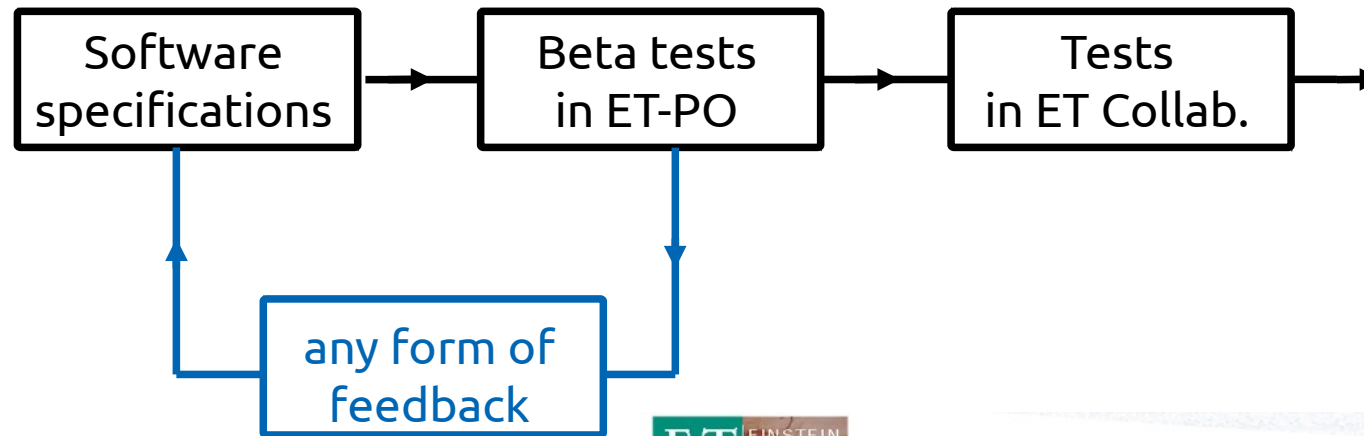
**EasyRedmine, MSProject Online, ClickUp**

## Timeline of the specific scheduling tool (option A)



	Licenses	Software configuration	Beta tests in ET-PO
EasyRedmine	✓	✓	READY !
Microsoft Project Online	✓	in progress	
Click-Up	✓	in progress	

## Beta test in ET-PO of the first software Easyredmine



- to interested parties (<4 due to the number of licences)
- Do It yourself (wiki, 9 tutorial videos )

<https://www.youtube.com/@ETTelescopeSchedule/videos>



Main

Log In

Toolbox

- Create New Topic
- Index
- Search
- Changes
- Notifications
- RSS Feeds
- Preferences
- Users
- Groups

You are here: ET - Einstein Telescope Wiki Pages > Main Web > WebHome (09 May 2024, Hemming)

### Welcome to the ET Wiki

To access the content of the ET Wiki, you will need an **EGO Active Directory account with ET permissions**.

- If you **already have** this account, just click on the [\[LogIn\]](#) option and complete the user-authentication process.
- If you **do not have** this account, you will need your Research Unit (RU) Leader to create a new account for you.

History: r9 < r8 < r7 < r6 | [Backlinks](#) | [View wiki text](#) | [Edit wiki text](#)

