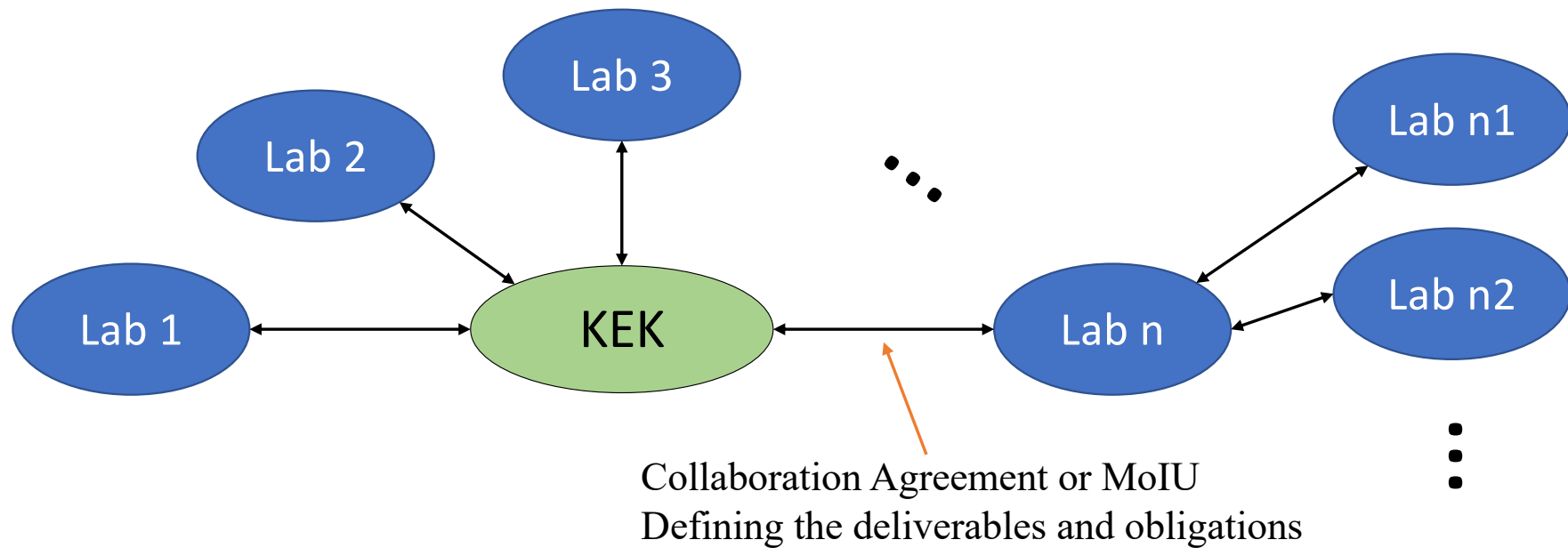


## ILC Technology Network

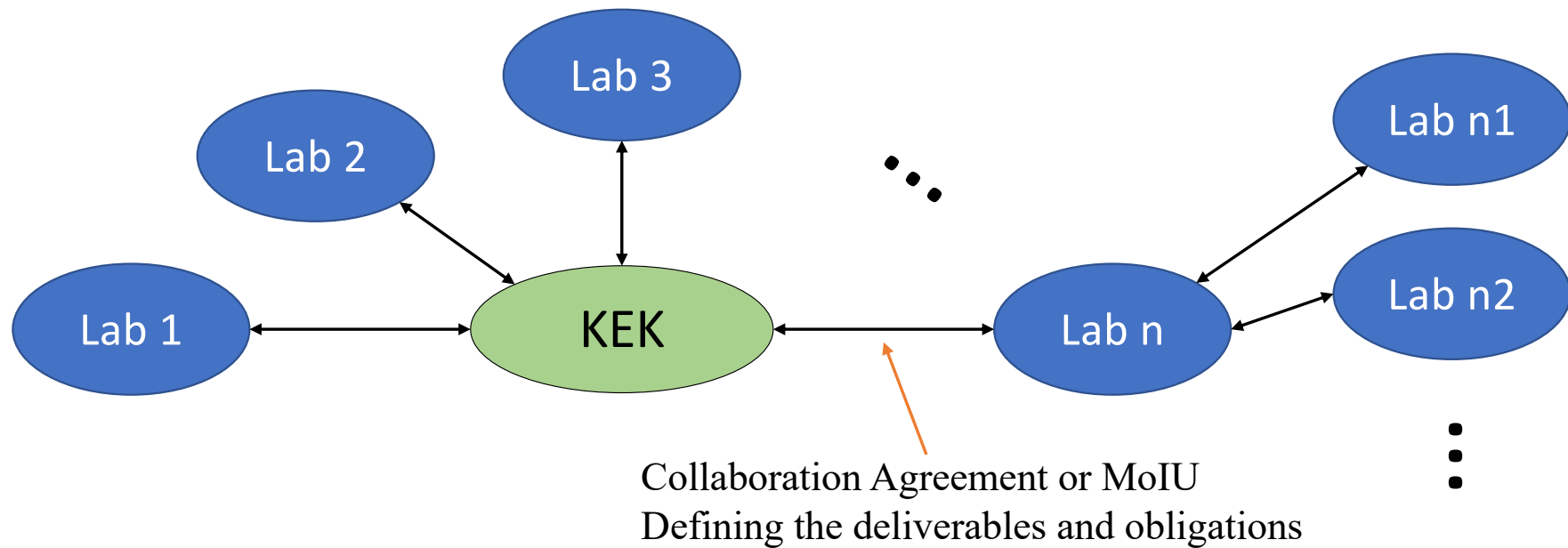
- Jointly organised by IDT and KEK
- Based on the institutional commitment, unlike for IDT-WG2

Bilateral agreements between KEK and a partner laboratory (Collaboration Agreement/MoU)



## ILC Technology Network

- Jointly organised by IDT and KEK
  - Based on **the institutional commitment**, unlike for IDT-WG2
- Bilateral agreements between KEK and a partner laboratory (Collaboration Agreement/MoU)



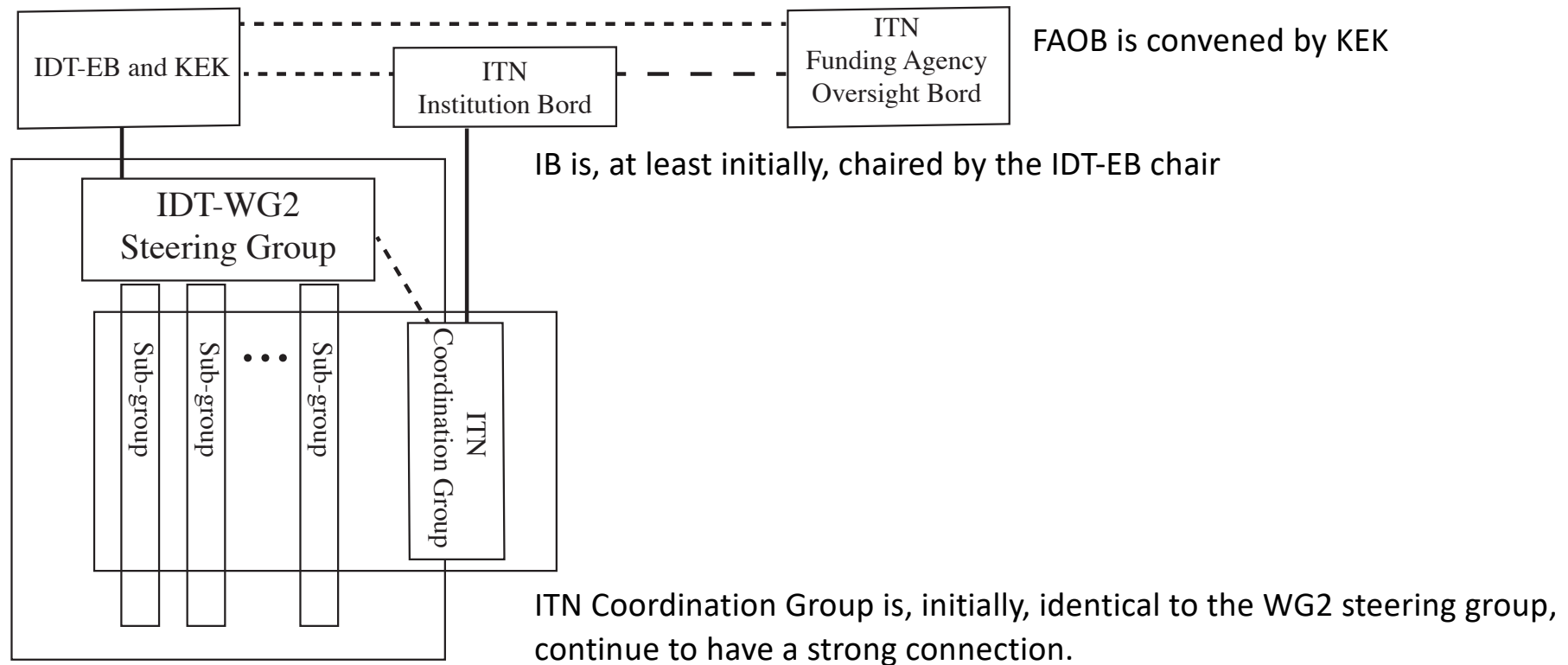
- Actual **work is embedded in the WG2 activities**, and initially defined by WG2 .
- **Stakeholders are the participating laboratories**, who are supported by their funding authorities

ITN organisation needs to take into account those (somewhat complicated) facts: WG2  $\neq$  ITN

- ITN requires **its own organisation** with an **assembly of representatives from the participating laboratories** (director or designated person) as the governing body of ITN.
- ITN requires its **own coordinating body** reporting to the stakeholders, but should be strongly connected to the WG2 Steering Group
- ITN benefits from **an assembly of funding agencies** as the oversight body.

ITN organisation needs to take into account those (somewhat complicated) facts: WG2  $\neq$  ITN

- ITN requires its own organisation with an assembly of representatives from the participating laboratories (director or designated person) as the governing body of ITN.
- ITN requires its own coordinating body reporting to the stakeholders, but should be strongly connected to the WG2 Steering Group
- ITN benefits from an assembly of funding agencies as the oversight body.



Following issues heeded to be considered for the overall time scale of the ILC

- ITN work packages are two to **four years**
- Given ITN, the preparatory phase **could be for three years**, rather than four years as indicated in the Pre-lab proposal, for the accelerator and site related work.
- MEXT funding programme for the accelerator R&D is planned for five years
- For **entering the preparatory phase**, concerned government authorities, **not only Japanese but also the European and the US**, have to become **ready discussing the ILC specific matter**.  
International Expert Panel discussion will be important to achieve this.
- WG3 needs to be supported till the Preparatory Phase starts
- P5 discussion in the US and FCC feasibility studies at CERN will have an impact

Following issues heeded to be considered for the overall time scale of the ILC

- ITN work packages are two to four years
- Given ITN, the preparatory phase could be for three years, rather than four years as indicated in the Pre-lab proposal, for the accelerator and site related work.
- MEXT funding programme for the accelerator R&D is planned for five years
- For entering the preparatory phase, concerned government authorities, not only Japanese but also the European and the US, have to become ready discussing the ILC specific matter. International Expert Panel discussion will be important to achieve this.
- WG3 needs to be supported till the Preparatory Phase starts
- P5 discussion in the US and FCC feasibility studies at CERN will have an impact

One of possible ideas, **just as an example**

