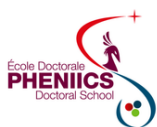


PHENIICS PhD Representatives

PHENIICS FEST 2026 – IJCLAB



université
PARIS-SACLAY



WHO ARE WE?

PHENIICS PHD STUDENTS REPRESENTATIVES



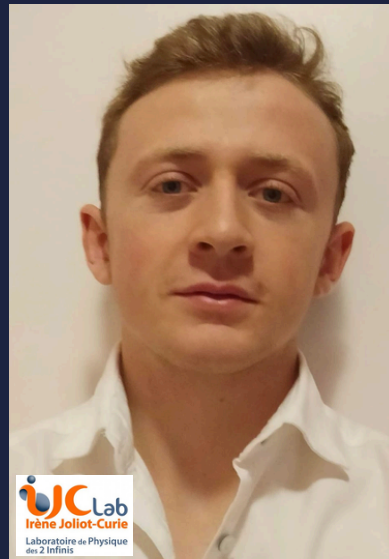
**PIERRE
BOISTIER**

2ND YEAR PHD



**SOPHIE
LE CARLIER
DE VESLUD**

1ST YEAR PHD



**ROBIN
DELAIRE**

1ST YEAR PHD



**ISAAC
ZEGHNI**

1ST YEAR PHD



**AFONSO
VICENTE**

1ST YEAR PHD

WHAT DO WE DO?

We are here to speak for you:

- voicing **your opinions** - ED Council, ARDOC, Doctoral competition, central Councils...

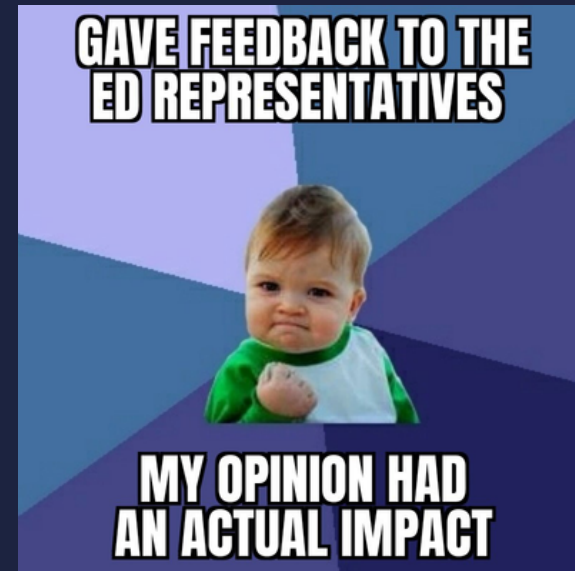
As well as to listen to you:

- if you need to speak about professional or personal **problems**
- help you find the **solutions** or the right people to speak to



A NEW SURVEY!

A survey to ask you how you are and how you feel



A NEW SURVEY!

Why should you answer?

- review of the internal regulations will soon take place
- ED council every few months
- share your personal experience

WHATSAPP GROUP!

A dedicated WhatsApp group for the
★ PHENIICS doctoral school only
→ strengthen our PhD community
→ share important information
("newsletter" channel)



IMPORTANT INFORMATION

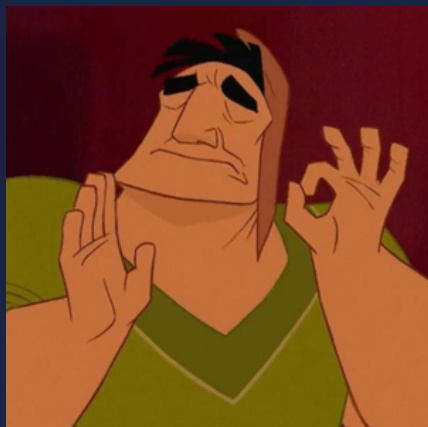
Dedicated advisor for PhD
students facing difficulties:

LAETITIA PEREIRA

laetitia.pereira@universite-paris-saclay.fr

A [WhatsApp](#) group for all
Paris-Saclay PhD students
(general information)

Flyer with all important contacts!



WE ARE HERE TO HELP

If you encounter difficulties during your Ph.D don't stay alone, we can provide assistance.

université
PARIS-SACLAY



FOR Ph.D RELATED ISSUES & CONFLICTS

Ph.D representatives

malia.mehdi@ijclab.in2p3.fr
pierre.boistier@universite-paris-saclay.fr
tania.zanatta-martinez@ijclab.in2p3.fr

Your CSI Members, Your laboratory director

Doctoral school director
verney@ijclab.in2p3.fr

Psychosocial Risk Prevention for Ph.D. students
laetitia.pereira@universite-paris-saclay.fr



DISCRIMINATION/HARASSMENT/SEXIST AND SEXUAL VIOLENCES

Your CSI Members

Doctoral school director
verney@ijclab.in2p3.fr

DALIDA (Univ. anonymous online incident report)
<https://www.universite-paris-saclay.fr/en/dalida-incident-report-unit>

Psychosocial Risk Prevention for Ph.D. students
laetitia.pereira@universite-paris-saclay.fr



FOR HEALTH ISSUES

Student health services

sse.contact@universite-paris-saclay.fr
service.medical452@universite-paris-saclay.fr
<https://www.universite-paris-saclay.fr/le-service-de-sante-des-doctorantes>

MonSoutienPsy (12 FREE appointments)



EMERGENCIES (7j/7 – 24h/24)

SAMU : 15, Firefighters : 18

Suicide prevention : 3114

Nightline Saclay : 01 85 40 20 10 (French)

01 85 40 20 00 (English)

Psychiatric Support Center (CPOA) : 01 45 65 81 09



ADMINISTRATIVE ISSUES

Doctoral school assistant

ed_pheniics@universite-paris-saclay.fr

Human resources

doctorant.drh@universite-paris-saclay.fr

International Matters

contact@science-accueil.org

international.welcomedesk@universite-paris-saclay.fr

ENJOY your Ph.D. experience

It's an healthy environment when :

- You are treated with **kindness**
- Your **ideas and decisions are respected**
- You receive **constructive feedback** on your work that helps you improve it
- You are given **opportunities** to develop your skills and self-confidence
- Your **career development** is supported
- You are allowed a **good work-life balance**



TALK ABOUT IT. It's violence when:

- You are assigned to "gender-based" tasks
- Your skills are underestimated
- You are treated condescendingly
- Your ideas are made invisible
- Your skills are publicly belittled
- You are judged based on your appearance
- You occasionally receive openly sexist comments or inappropriate terms
- You are isolated from your colleagues
- You are asked questions on your intimate life
- Sexual rumors are spread about you



ASK FOR HELP. You are in danger when:

- Sexist jokes are told all day long
- You are told sexual stories that make you uncomfortable
- You receive insulting or hurtful public comments with sexual connotations
- You are exposed to sexually explicit material
- You are threatened with retaliation if you report violent behavior
- You receive unwanted intimate advances
- You are offered career advantages in exchange for intimate relations
- You suffer negative consequences for refusing sexual advances



Don't hesitate to contact the people here:
they're here for you!



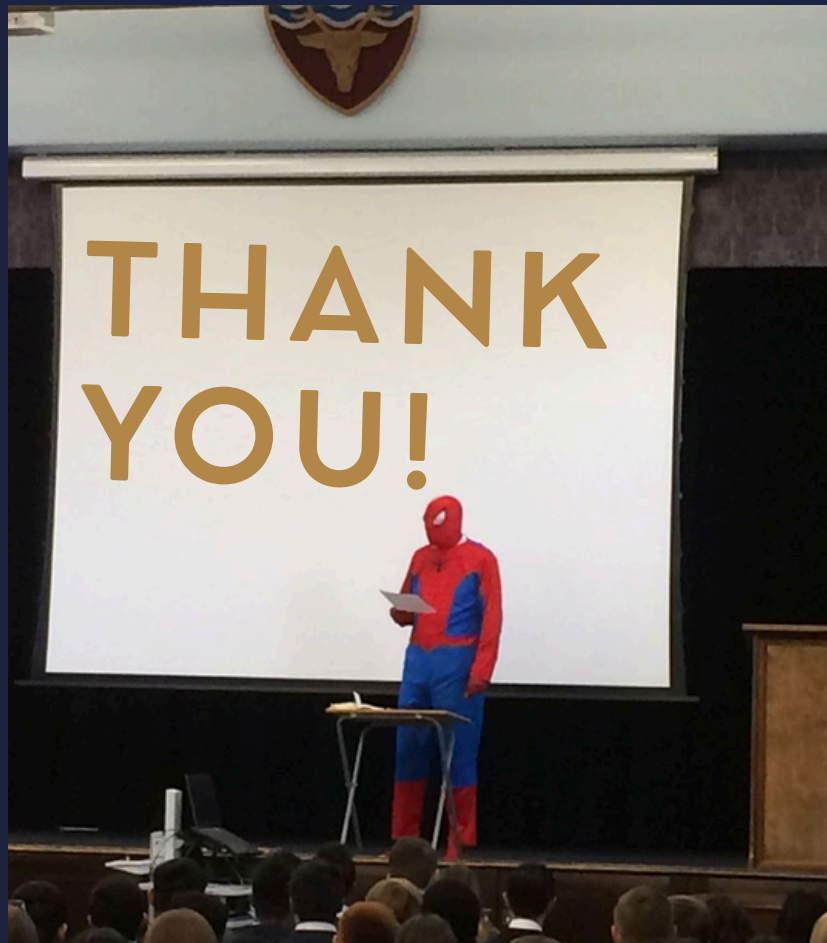
CAMPUS LIFE

@ www.universite-paris-saclay.fr/en

(health, handicap, international, social help, housing, sports, activities, etc.)



With the collaboration of Ph.D representatives



pierre.boistier@universite-paris-saclay.fr
sophie.le-carlier-de-veslud@ijclab.in2p3.fr
isaac.zeghni@ijclab.in2p3.fr
robin.delaire@ijclab.in2p3.fr
afonso.vicente@ijclab.in2p3.fr