



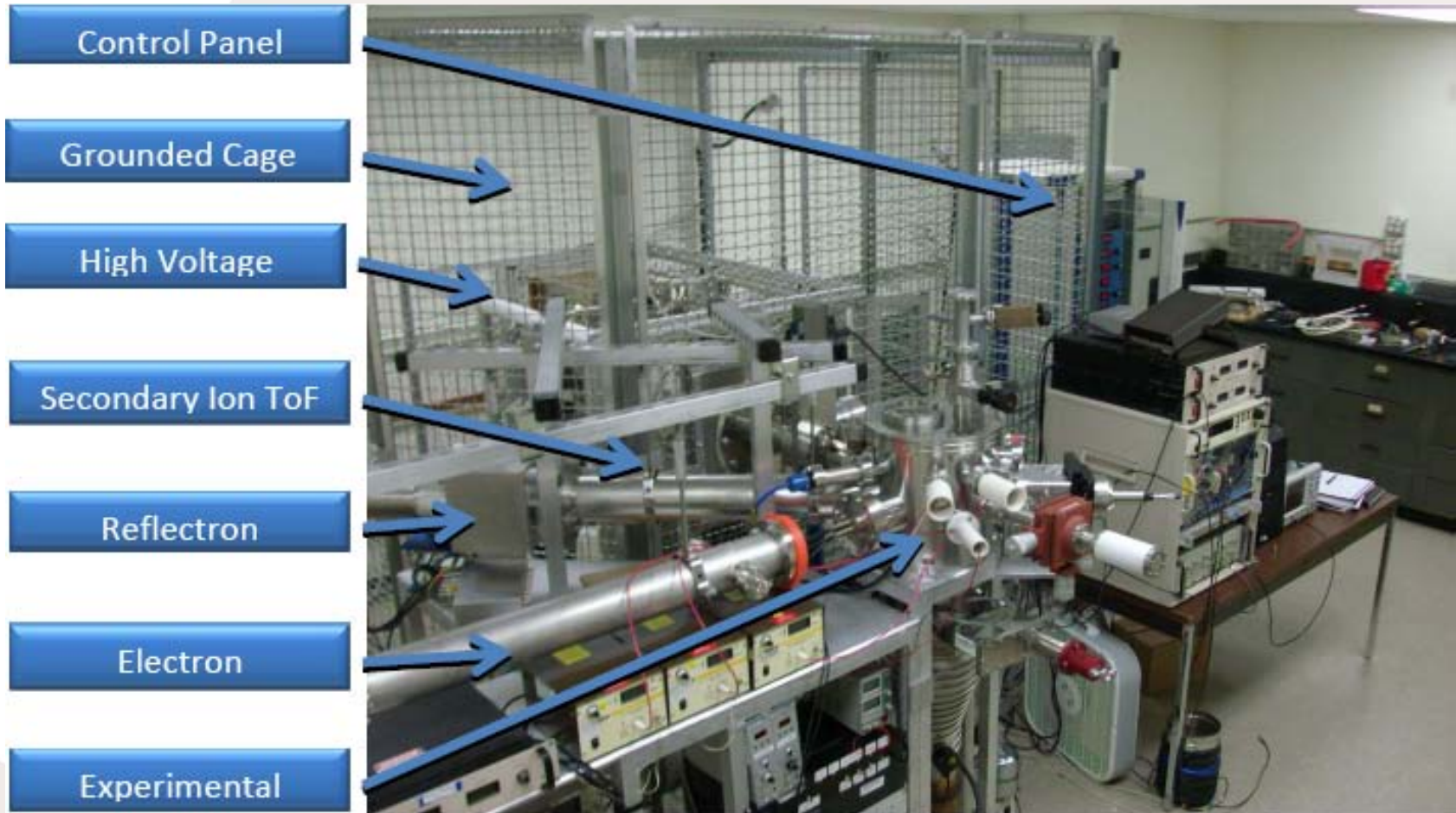
Andromède

De la nucléosynthèse à la chimie prébiotique



ANDROMEDE

Agrégats, ORION, TANCREDE, PEGASE... ANDROMEDE



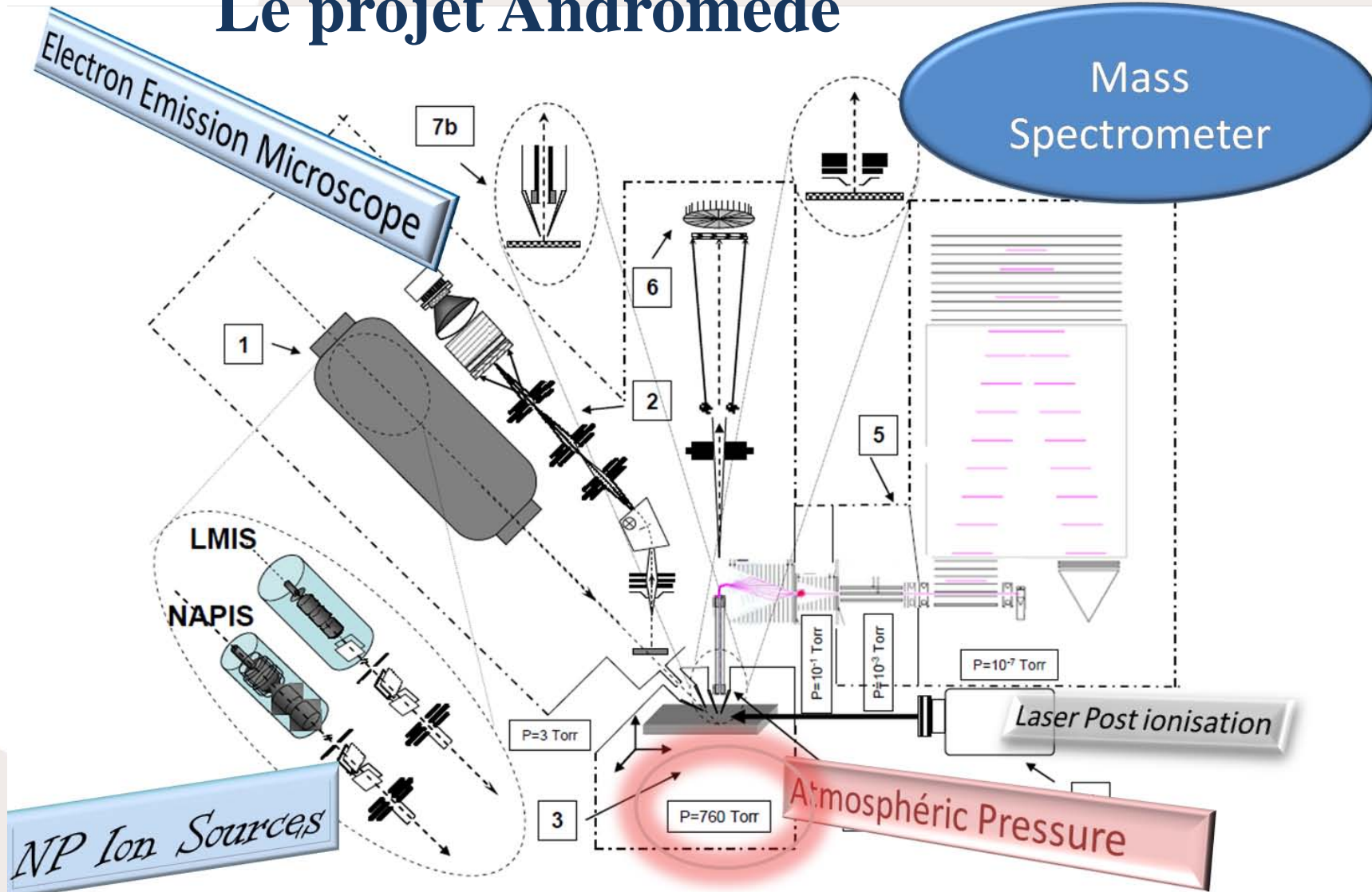
mercredi 27 avril 2011

Nano-particules d'or produits avec une source LMIS (Liquid Metal Ion Source=

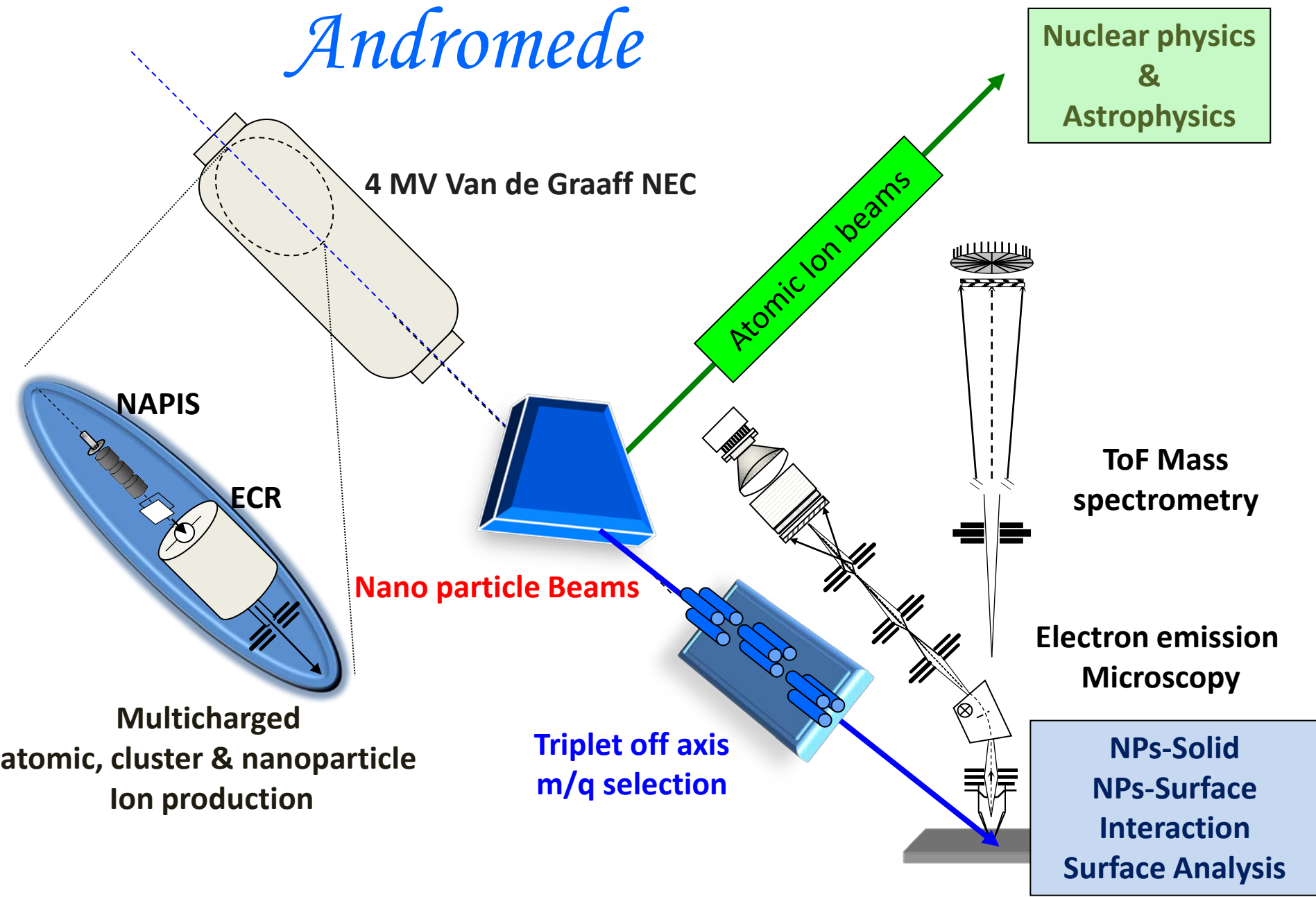


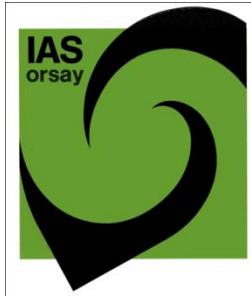
Mercredi 27 avril 2011

Le projet Andromède



Andromede





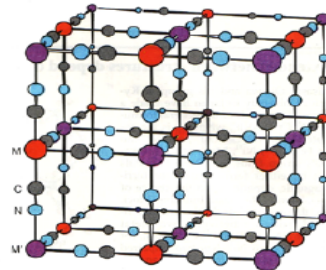
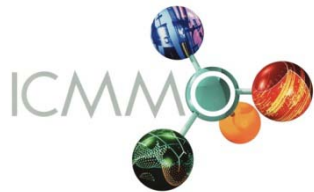
Cosmo chimie

– analyse ionique, à l'échelle submicronique, de matériaux extraterrestres.

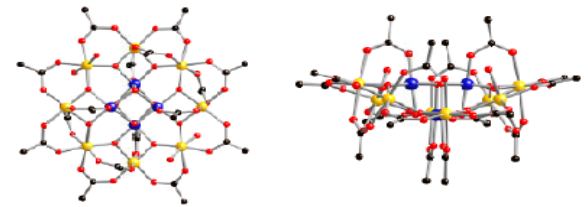
– synthèse moléculaire par irradiation. Nanoparticules incluses

Nanoparticules, surfaces nanostructurées & catalyses

Spintronic, catalyses



« Prussian Blue »-type molecular nanoparticles



« Mn₁₂ » cluster (twelve Mn ions (blue/yellow) held together by organic ligands)

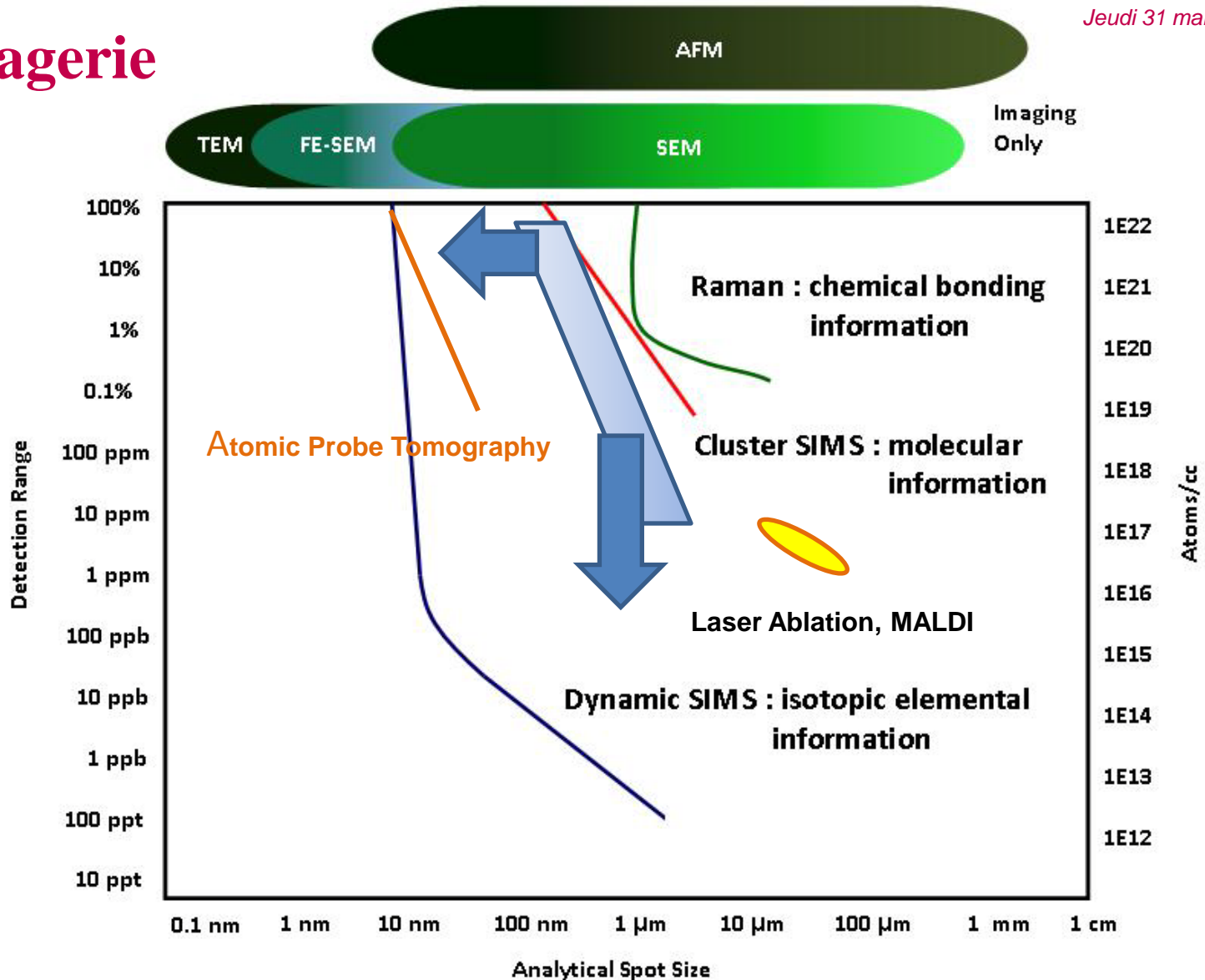
Biologie: LPS, Bacteries et « lipidic »



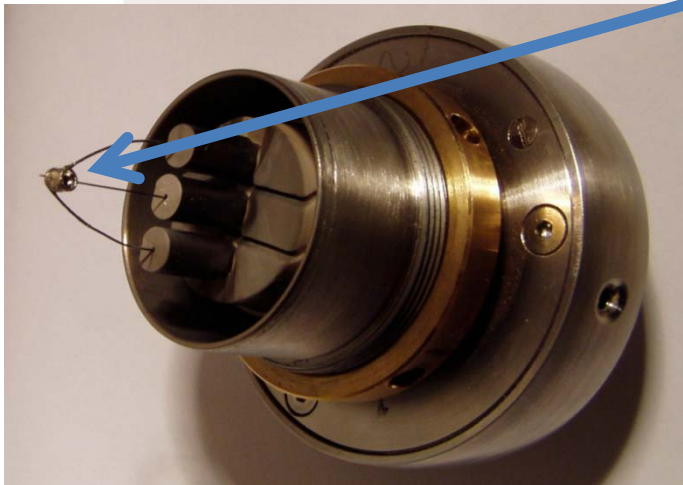
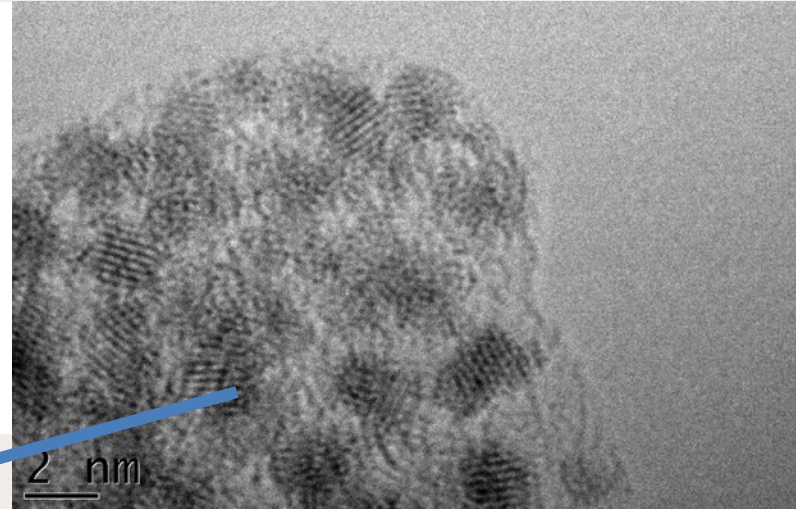
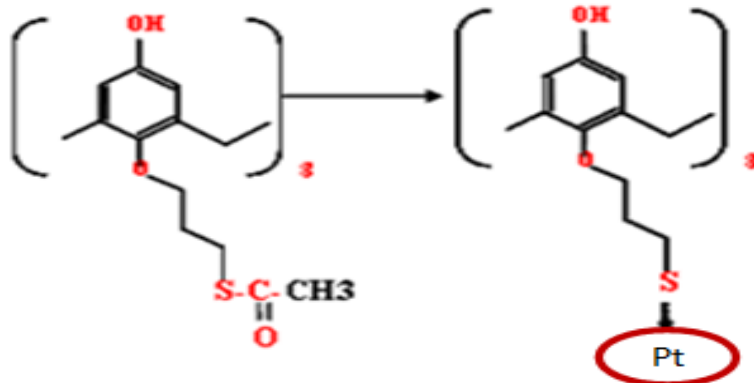
Nucléosynthèses



L'imagerie



NAPIS (Nano Particle Ion Source)



Mono-dispersed nano-particles
produced by chemists
The LMIS design is possible with
NPs incorporated in a conducting
solid polymer, which can melt by
heating

LMIS >>>> NAPIS

Collaboration with ICMMO and
Orsayphysics