

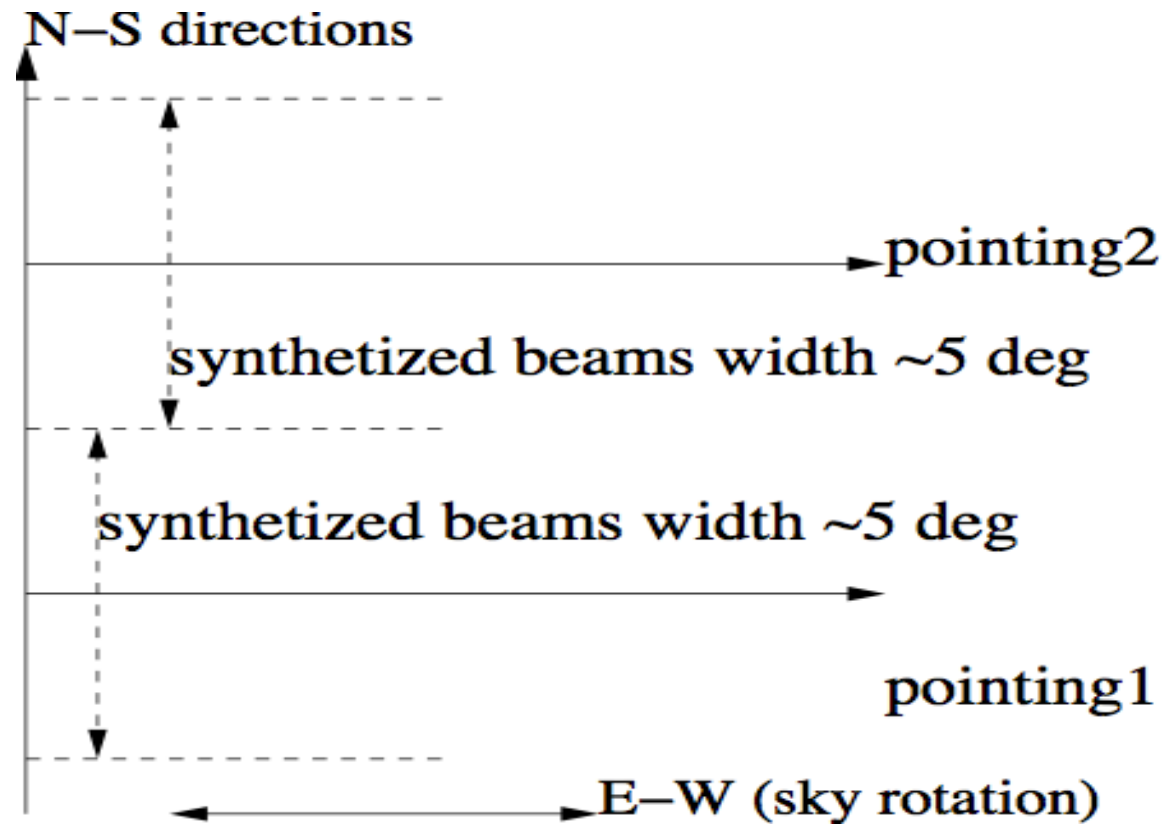
PAON-4 configurations

Jiao Zhang

2013-7-5

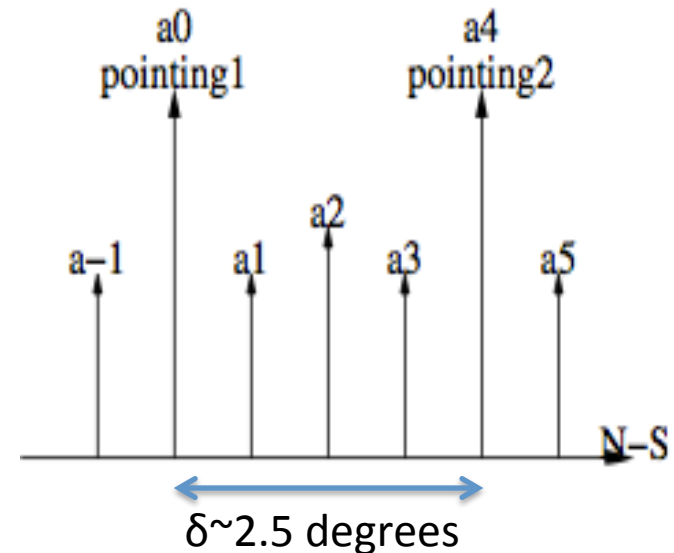
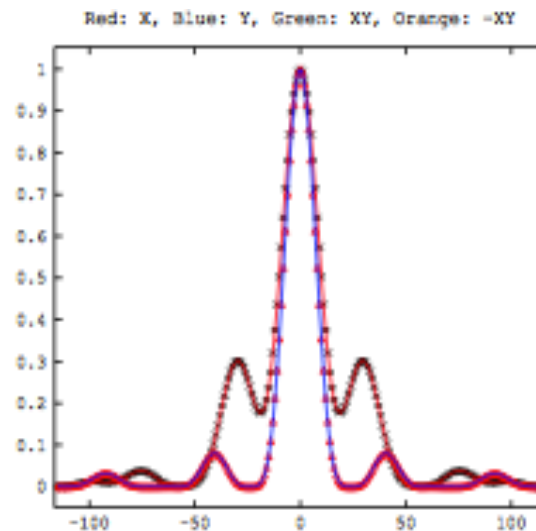
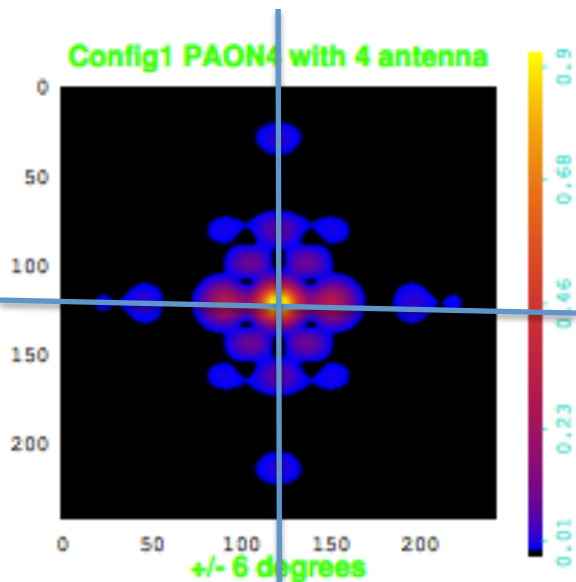
aim

- Comparison of synthesized beams for different PAON-4 configurations using one or two sky pointing.

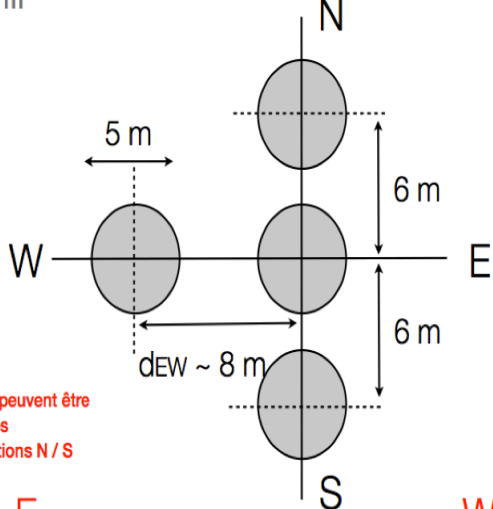
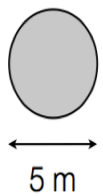


methods

- Synthesized beams angular & u,v plane coverage for configuration 1-5
- Beams with pointing a-1,a0,a1,a2 for configuration 1-5

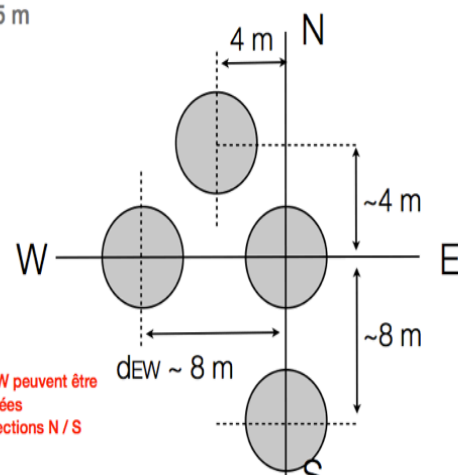


1 Antenne D = 5 m



1

1 Antenne D = 5 m



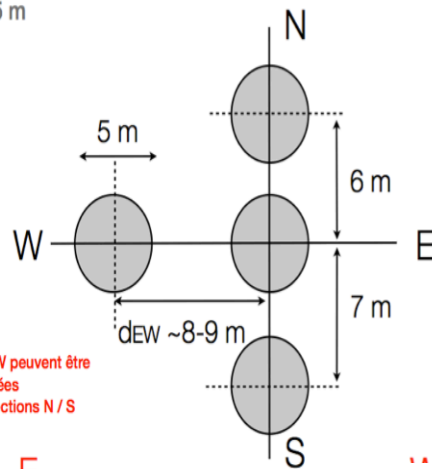
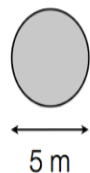
2

Les directions E / W peuvent être échangées ainsi que les directions N / S

3

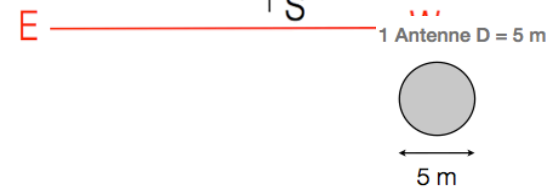
OU E ————— W

1 Antenne D = 5 m



Les directions E / W peuvent être échangées ainsi que les directions N / S

4

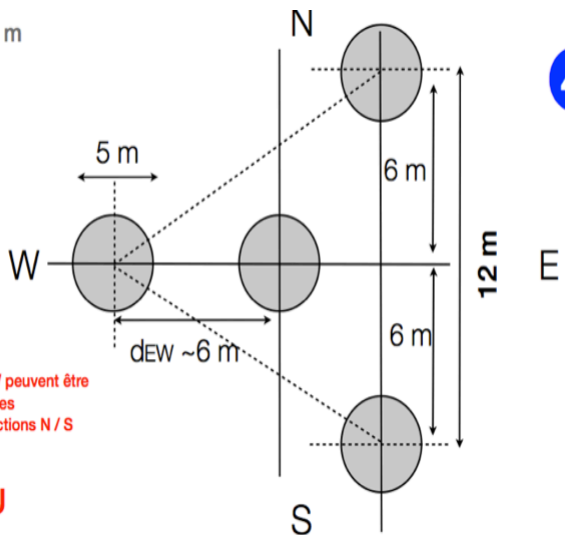
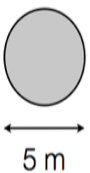


Les directions E / W peuvent être échangées ainsi que les directions N / S

OU

E ————— W

1 Antenne D = 5 m



Les directions E / W peuvent être échangées ainsi que les directions N / S

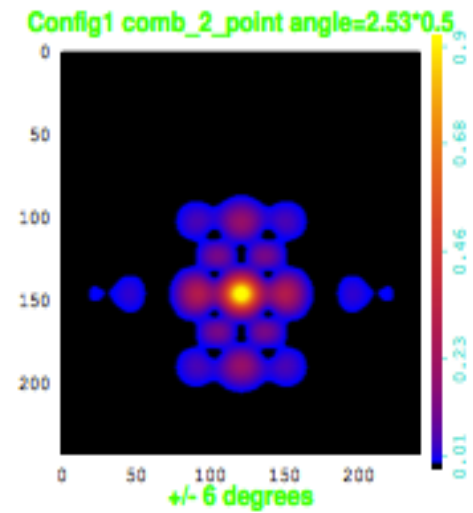
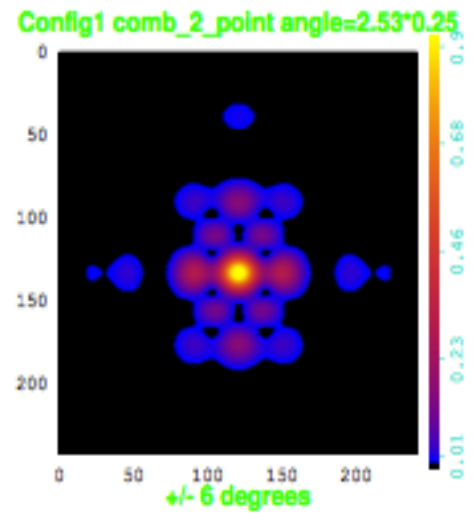
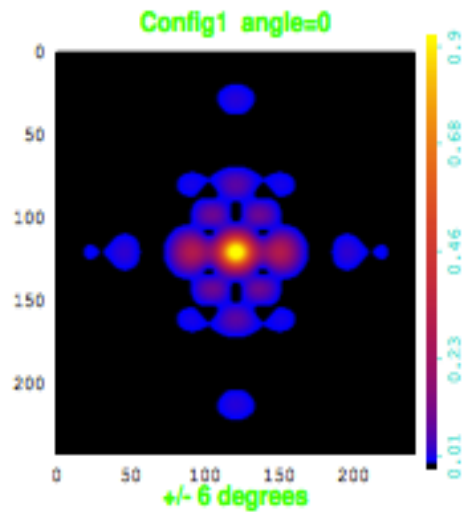
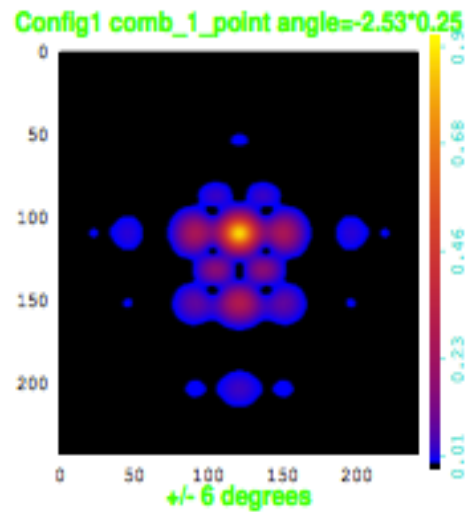
OU

E ————— W

5

Configuration 4 paraboles D=5 m
3 paraboles aux sommets d'un triangle équilatéral de 12 m de côté
+ une parabole ± centre du triangle

Configuration 1

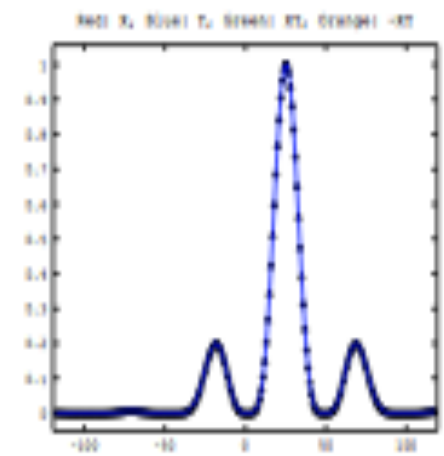
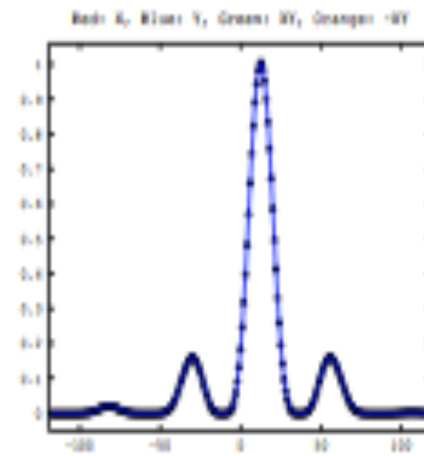
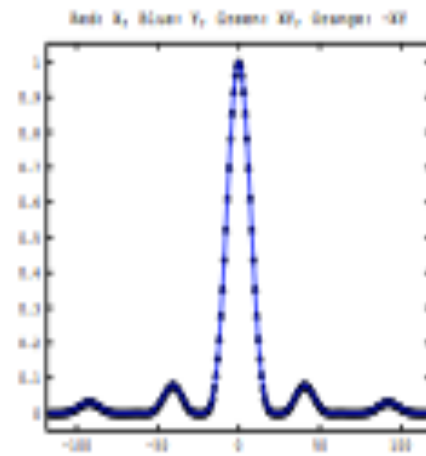
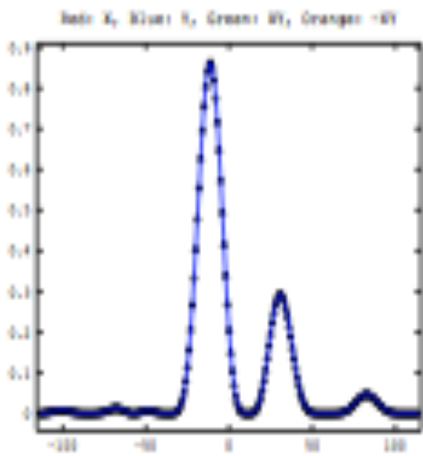


$a-1 = -0.63$ deg

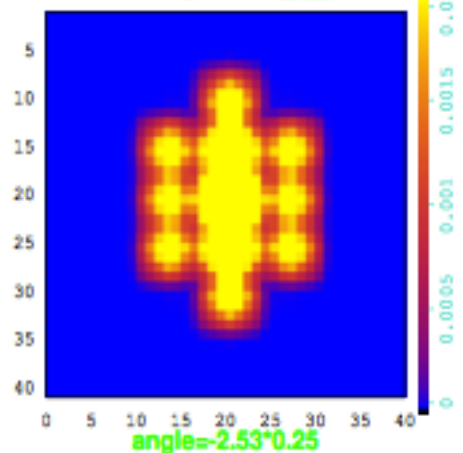
$a0 = 0$ deg

$a1 = 0.63$ deg

$a2 = 1.26$ deg

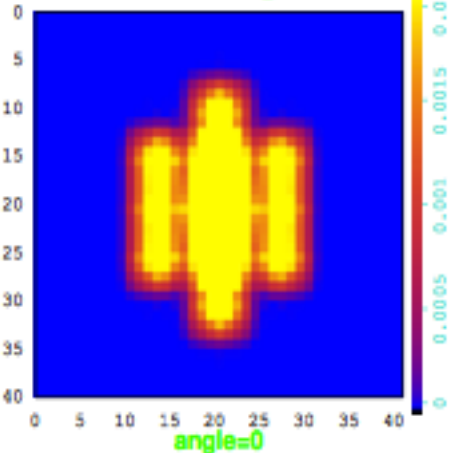


FFT Config1 comb_1_point



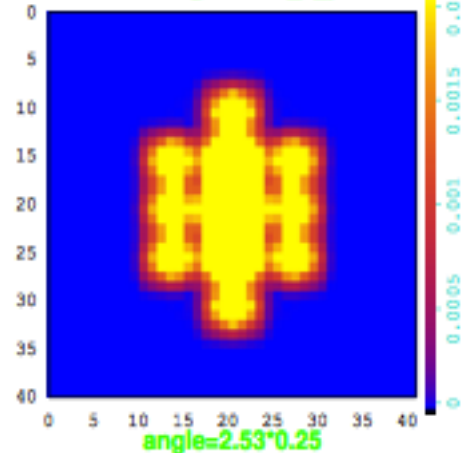
$a-1 = -0.63$ deg

FFT Config1



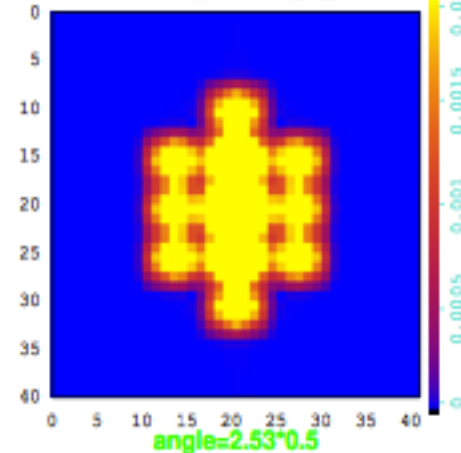
$a0 = 0$ deg

FFT Config1 comb_2_point

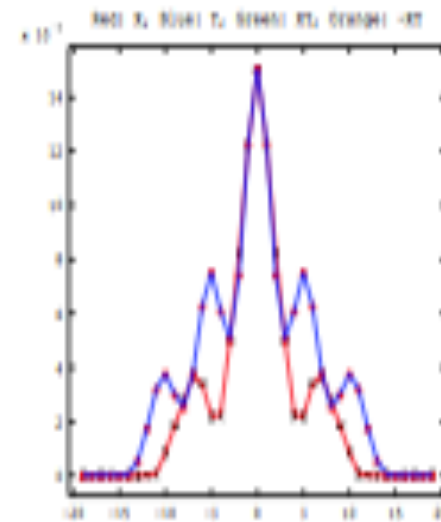
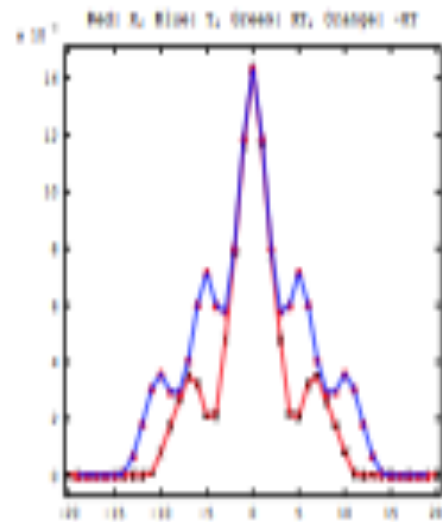
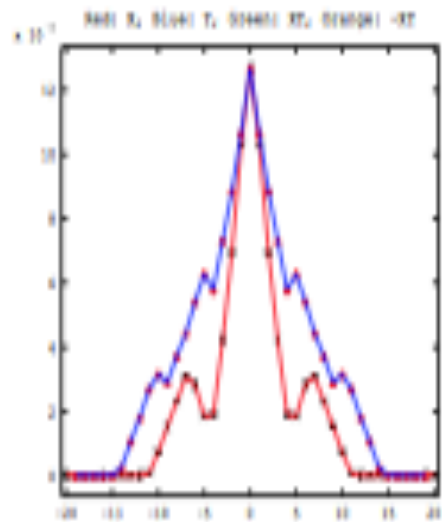
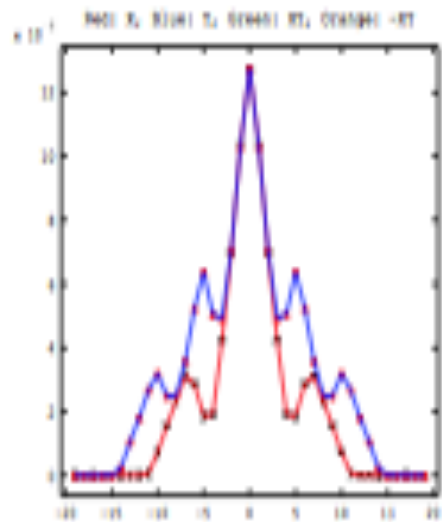


$a1 = 0.63$ deg

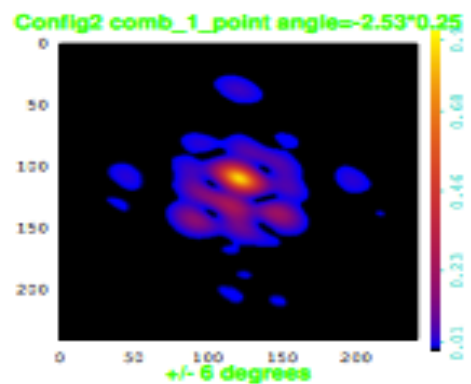
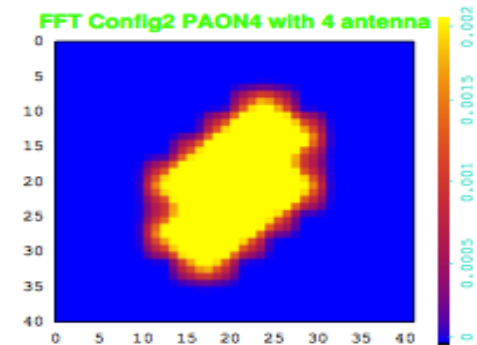
FFT Config1 comb_2_point



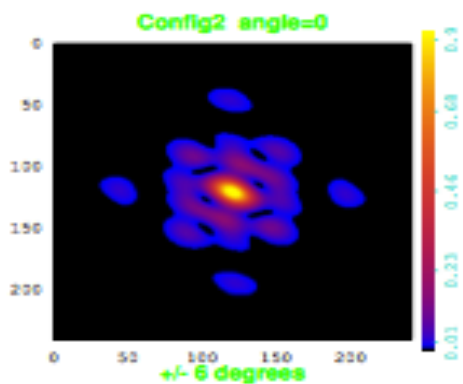
$a2 = 1.26$ deg



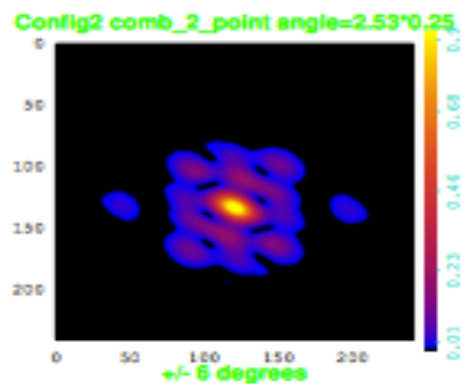
Configuration2



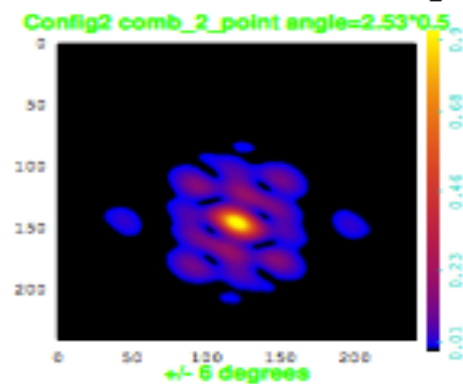
$a-1 = -0.63$ deg



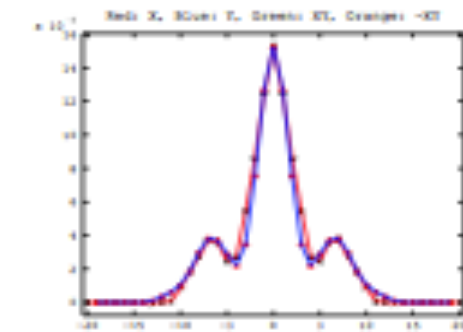
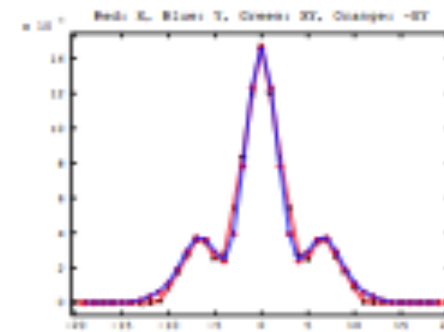
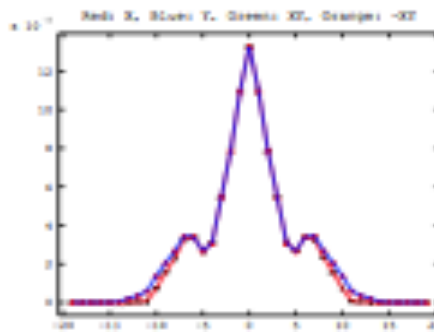
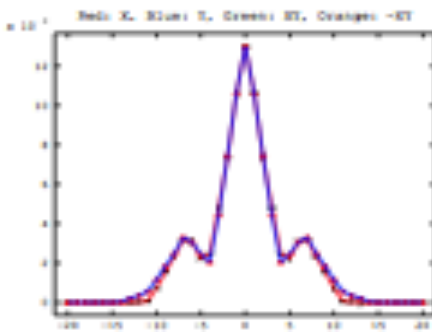
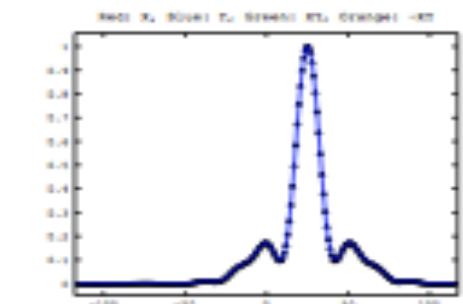
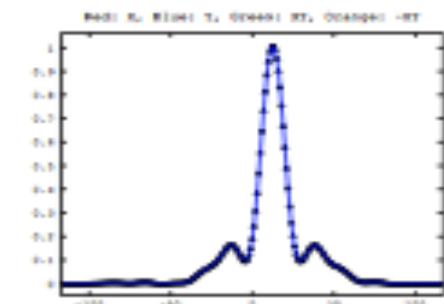
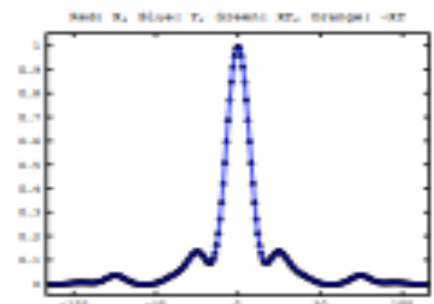
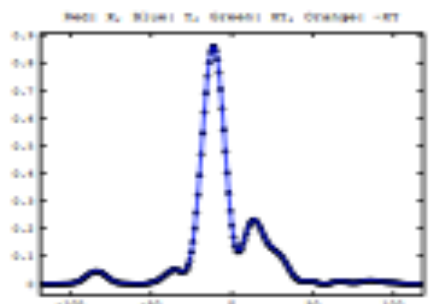
$a_0 = 0$ deg



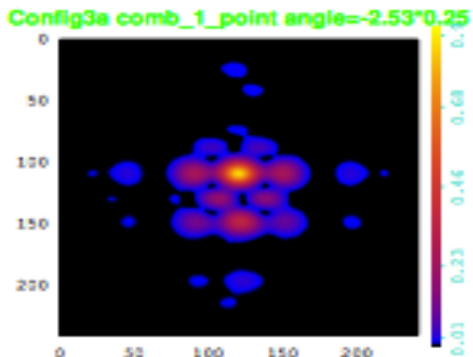
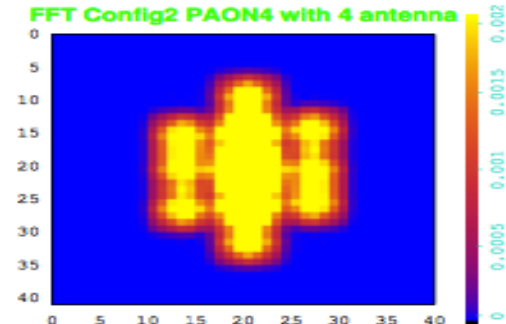
$a_1 = 0.63$ deg



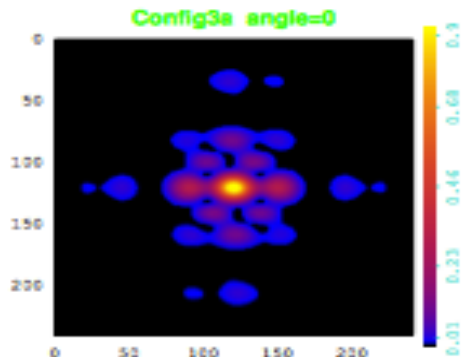
$a_2 = 1.26$ deg



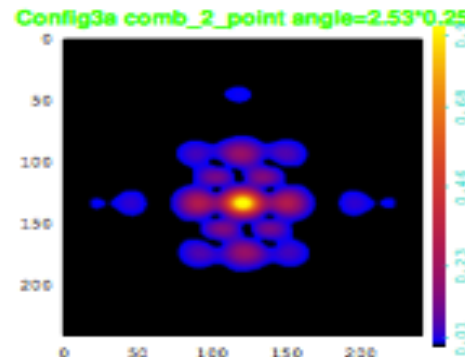
Configuraiton3



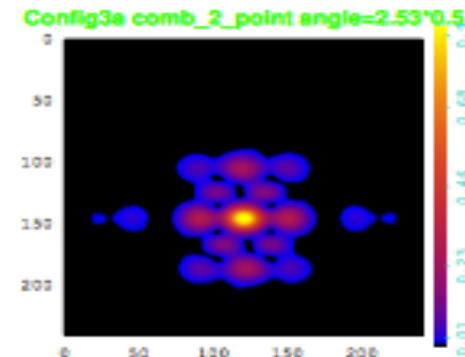
a-1=-0.63 deg



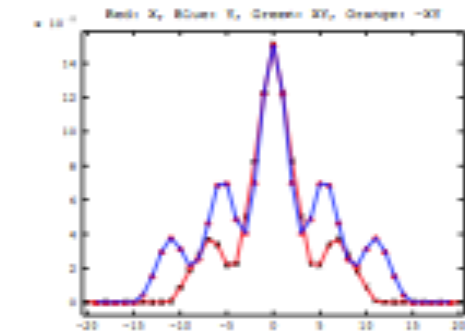
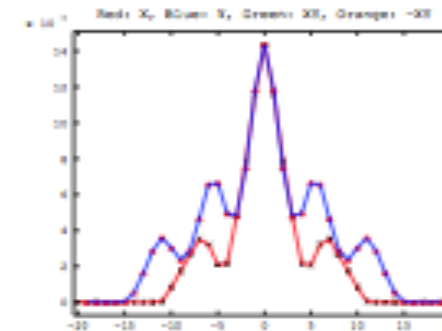
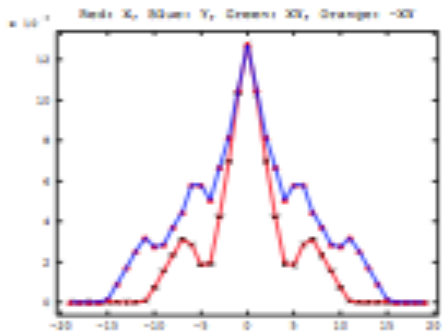
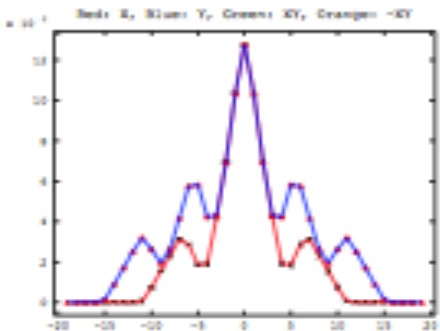
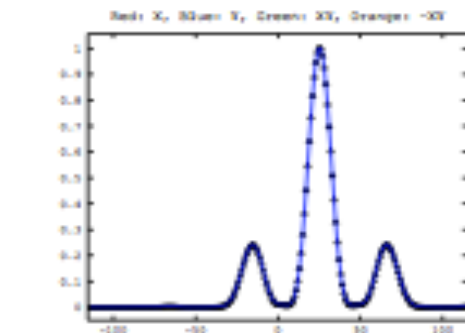
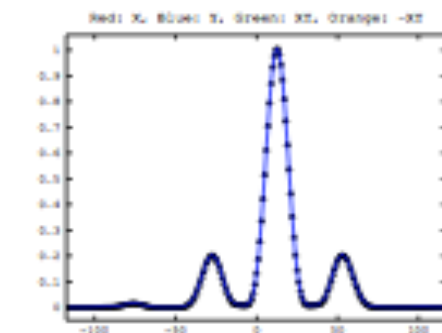
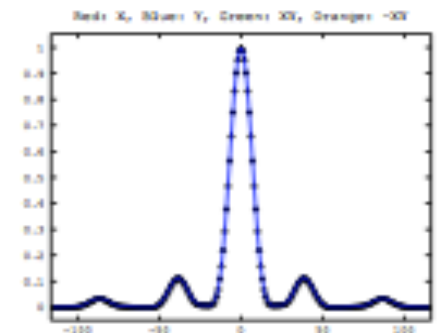
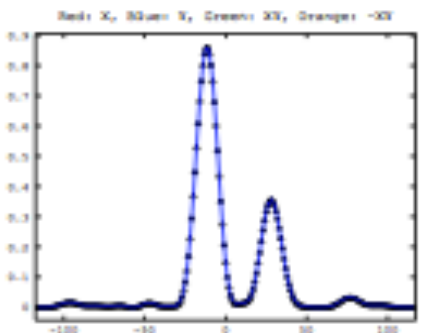
a0=0 deg



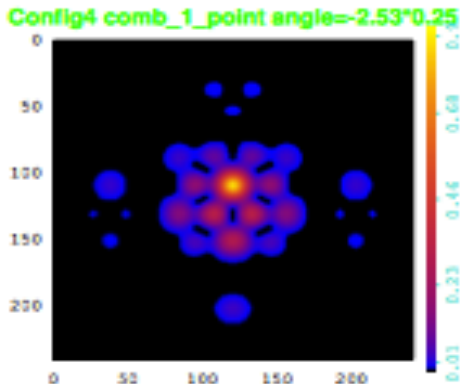
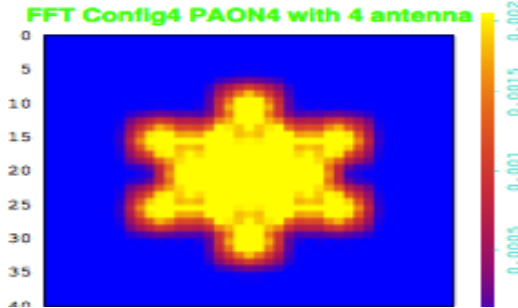
a1=0.63 deg



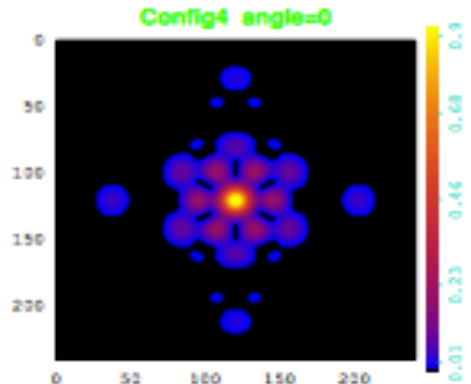
a2=1.26 deg



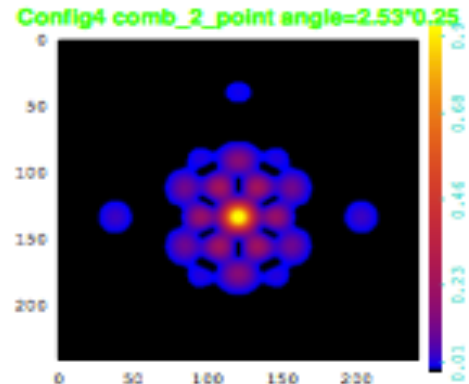
Configuration4



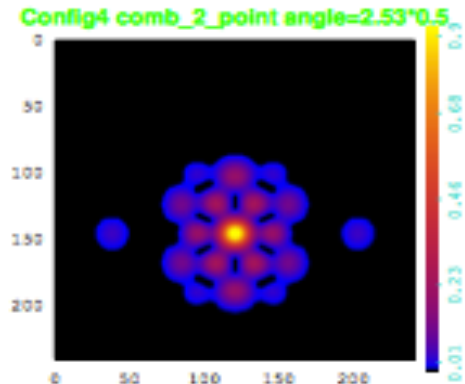
a-1= -0.63 deg



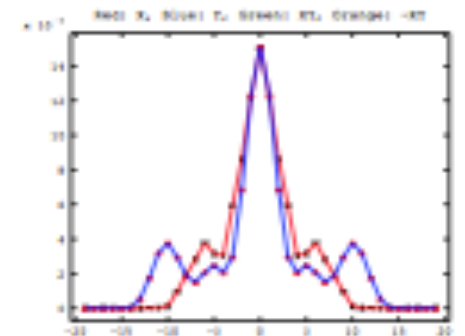
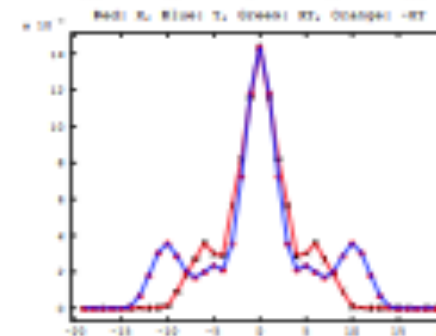
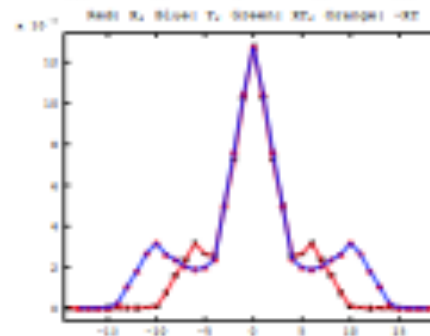
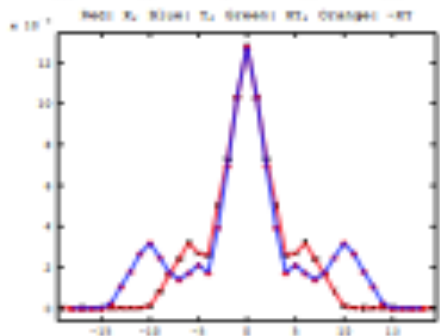
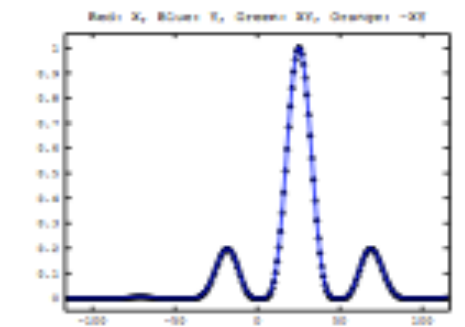
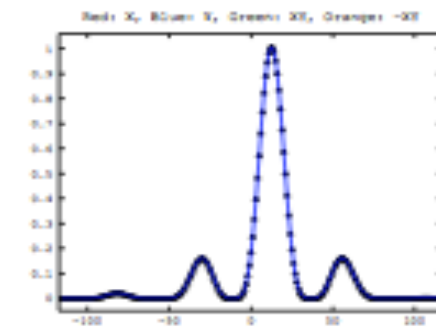
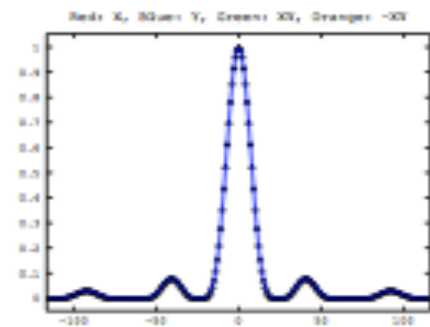
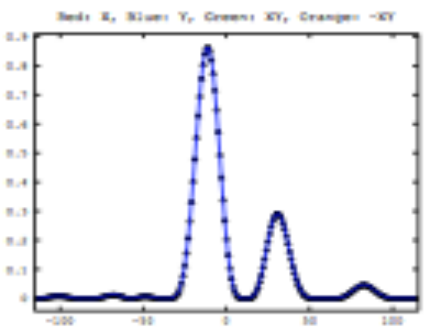
a0=0 deg



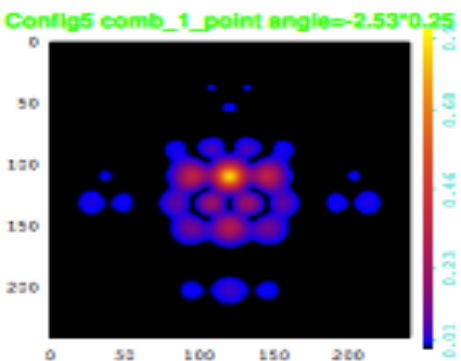
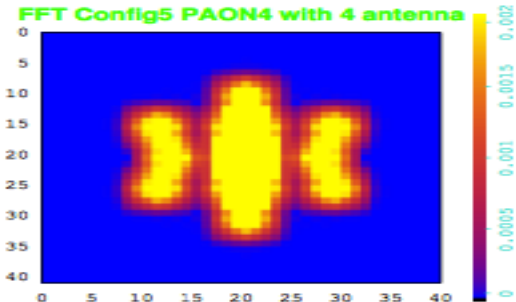
a1= 0.63 deg



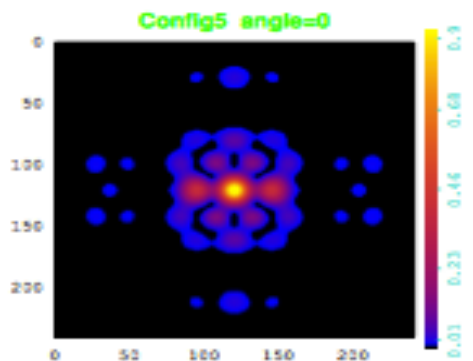
a2= 1.26 deg



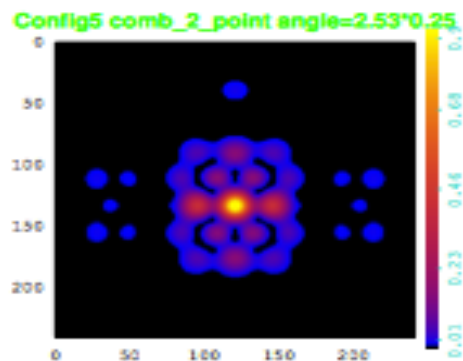
Configuration5



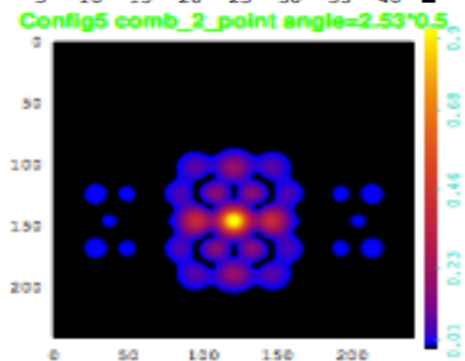
a-1=-0.63 deg



a0=0 deg



a1=0.63 deg



a2=1.26 deg

