



Traitement des images spatiales Téledétection

Henri Maître

henri.maitre@telecom-paristech.fr



13 mai 2014





Téledétection et Imagerie Satellitaire

- **Au sein du groupe « Traitement et Interprétation des Images » (I. Bloch), du département TSI (Y. Grenier)**
 - Contributions au spatial de :
 - **4** Profs (F. Tupin, JM Nicolas, H. Maître, Y. Gousseau), + I. Bloch
 - **3** MdC (M. Roux, M. Campedel, S. Ladjal), **1** CR CNRS (A. Almansa) + H. Sahbi
 - ~ **2** ou **3** post-docs ~ **12** doctorants
- **Traitement d'images en imagerie visible et radar à très haute résolution** (amélioration des performances : résolution, stéréo, interférométrie, polarimétrie, ...)
- **Fusion de capteurs** (radar/visible, visible/visible, hyperspectral, ...)
- **Reconnaissance des formes - Raisonnement dans les images - contribution à l'interprétation**
- **Bases de données d'images satellitaires**



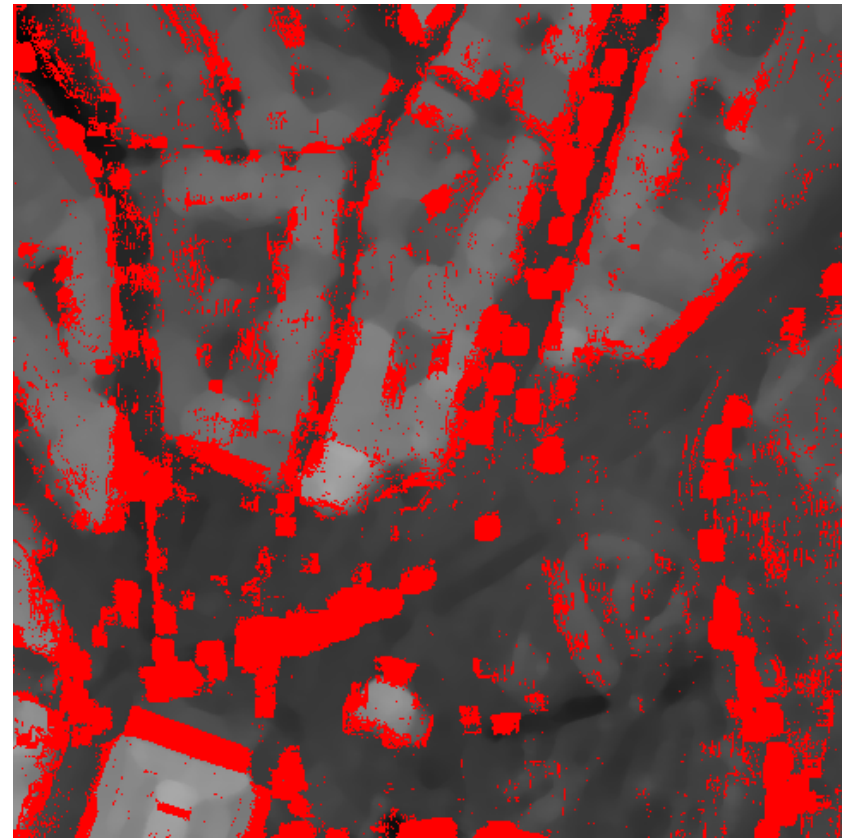


Très près du capteur (Pleiade, SMOS, Modis) (A. Almansa, S. Ladjal, Y. Gousseau, M. Roux)

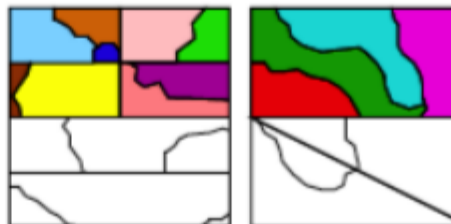
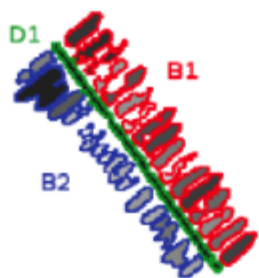
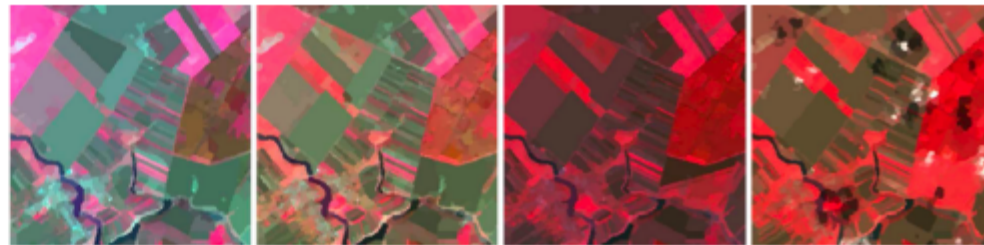
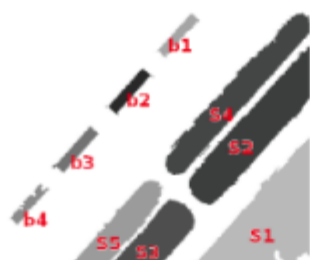
- **Développement d'outils performants de traitement des images :**
 - Repousser les limites de résolution :
 - Modèles de formation des images, Configuration des capteurs
 - Restauration (techniques variationnelles, décompositions $u+v+w$, ...)
 - Prise en compte d'échantillonnage irrégulier
 - Mise en œuvre de techniques de super-résolution multi-images
 - Rendre fiable les détections :
 - Méthodes a contrario
 - Modélisation mathématique des performances
 - Application à la stéréovision, à la détection d'alignement, de structures



Carte de Fiabilité en Stéréoscopie fine (A. Almansa)



Raisonnement Spatial et Temporel (I. Bloch)



$$\sum_{r=1}^{|\mathcal{P}|} \frac{1}{2} (\log(N_x N_y) + \log(4) + (|C_r - 1|) \log 3)$$



Spatial reasoning based on fuzzy rules for understanding scene configurations. C. Vanegas, Ph.D. work

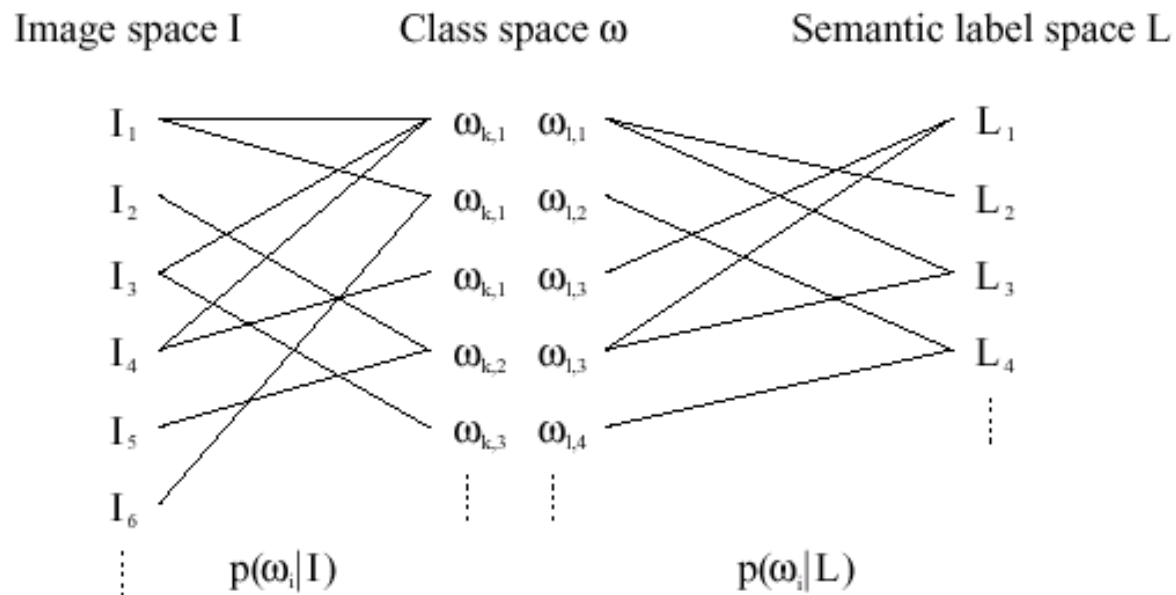
Spatio-temporal reasoning based on multi-temporal segmentation using MDL for Satellite Image Time Series. C. Le Men, Ph.D. work.



Apprentissage, Indexation et Fouille









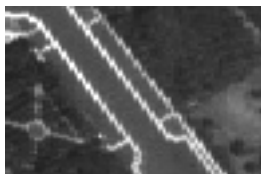
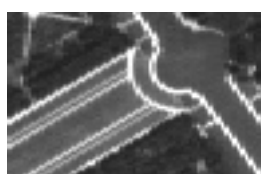

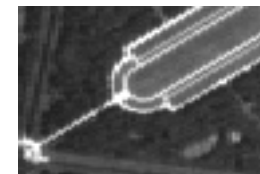




(M. Campedel, H. Maître, H. Sahbi)

- **Objectif** : développer un banc de test pour l'indexation automatique des images lors de leur réception
- **Méthodologie** :
 - Classification de textures sur des fenêtres $\sim 100 \text{ m} \times 100 \text{ m}$
 - Hiérarchie de classifieurs de + en + complexes



Apprentissage, Indexation et Fouille

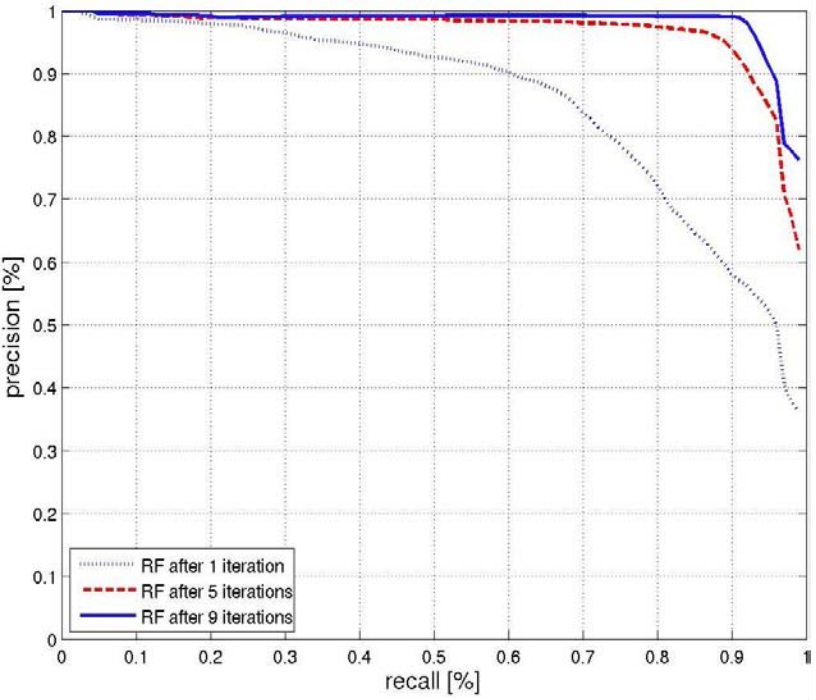
(M. Campedel, H. Maître)

Cimetières				
Échangeurs routiers				
Jardins de château				
Parkings				

Exemples de textures de la base d'apprentissage

■ Représentation hiérarchique

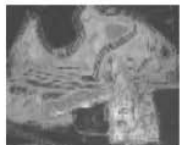
■ Apprentissage par renforcement



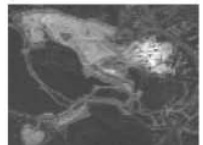
Zone résidentielle



carrière



carrière



carrière



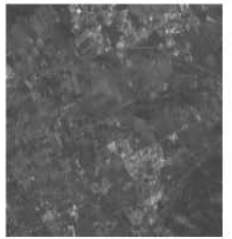
Zone montagneuse



mer



image test



zone rurale

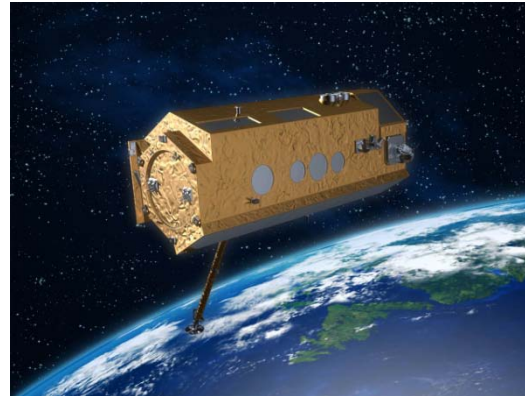


Imagerie Radar (F. Tupin, JM Nicolas)

■ Traitement d'image des SAR de nouvelle Génération



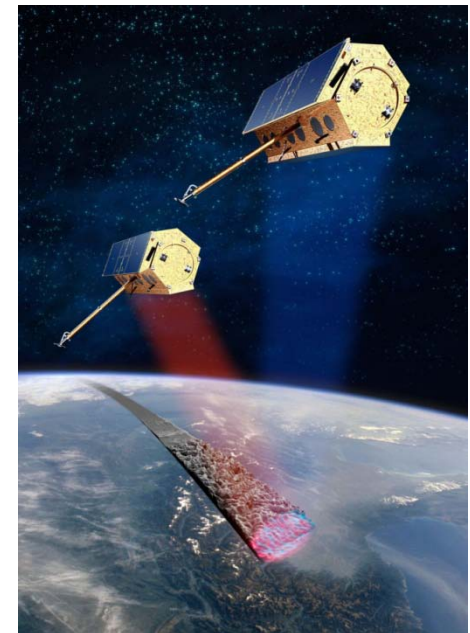
SAR-lupe



TerraSAR-X



RadarSAT-2



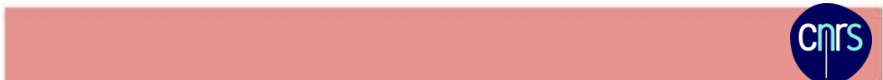
TanDEM-X

Extraction d' Information – routes



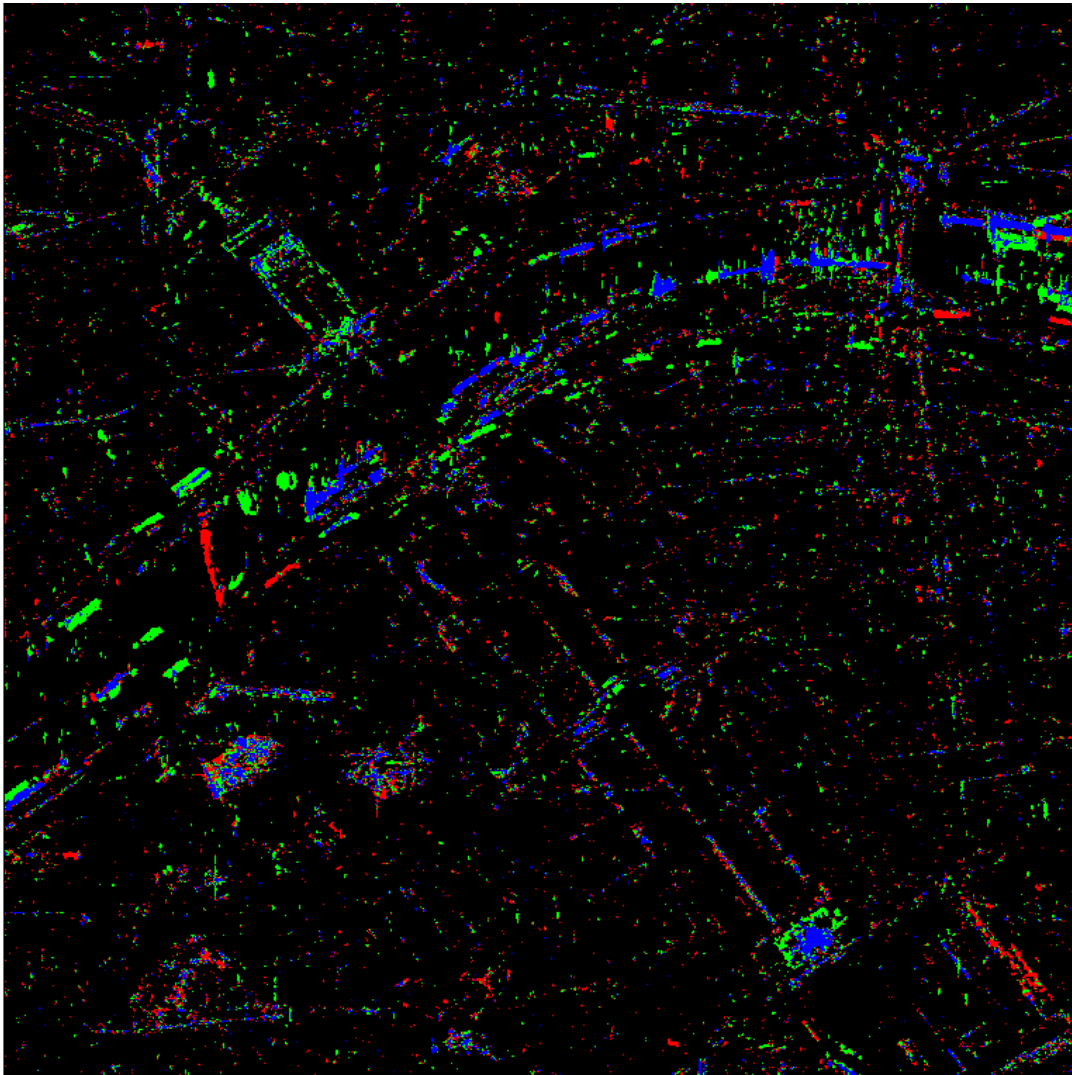


Etude de changement (F. Tupin et al.)



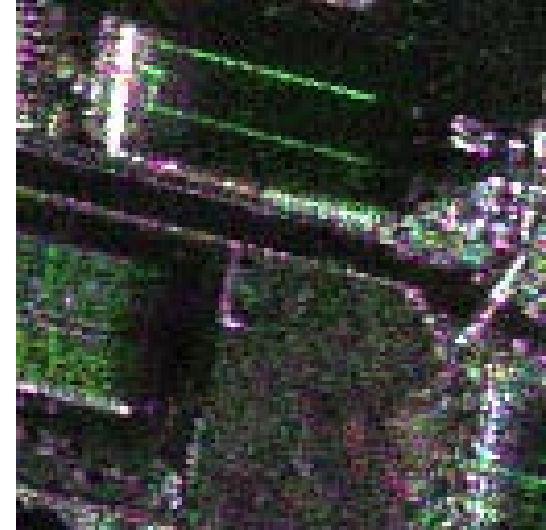
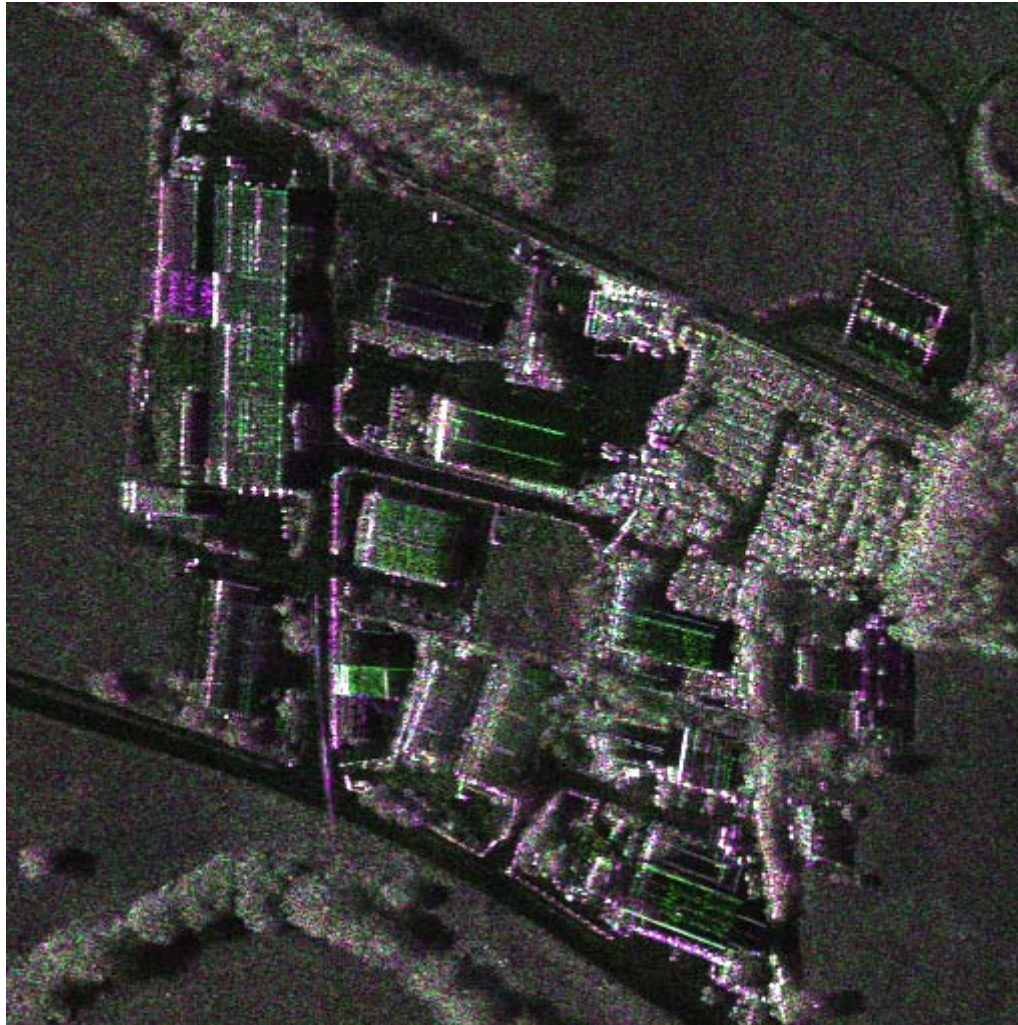


Etude de changement (F. Tupin et al.)



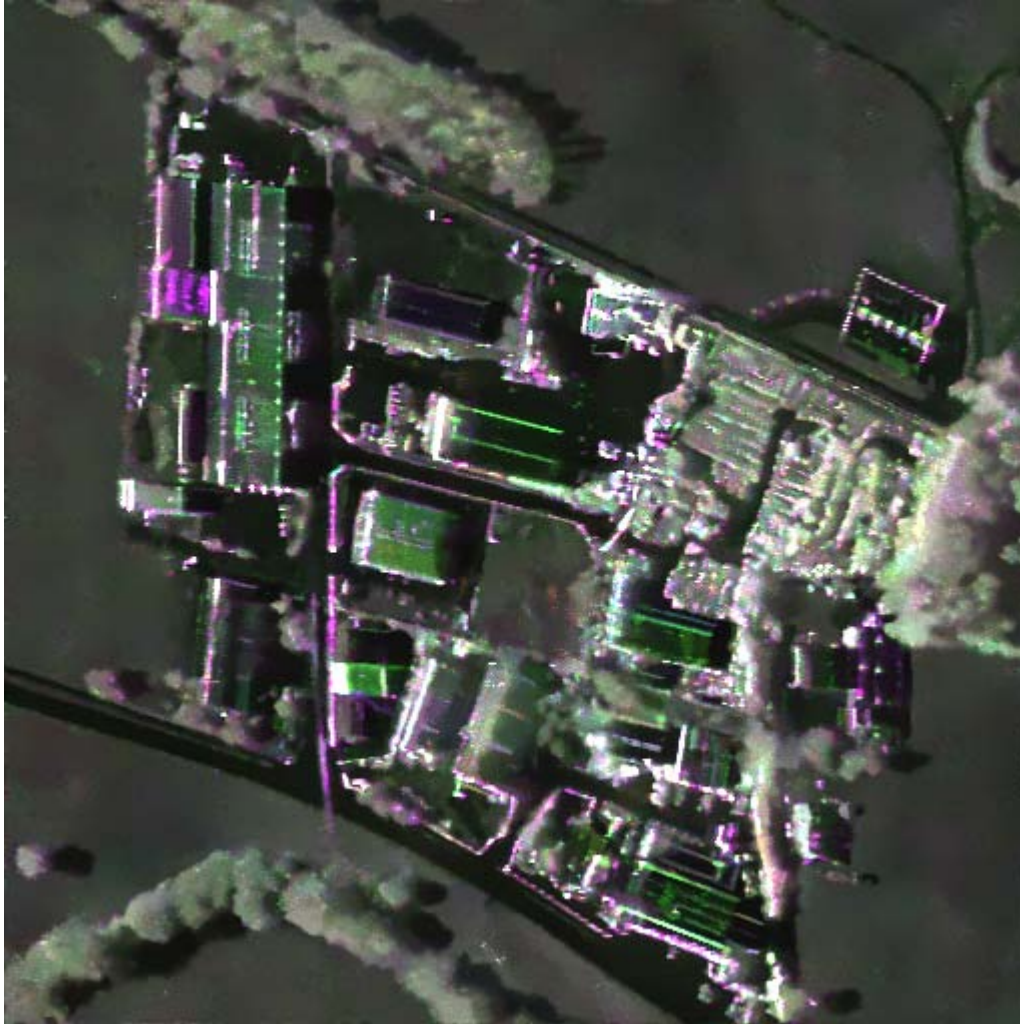


Filtrage polarimétrique

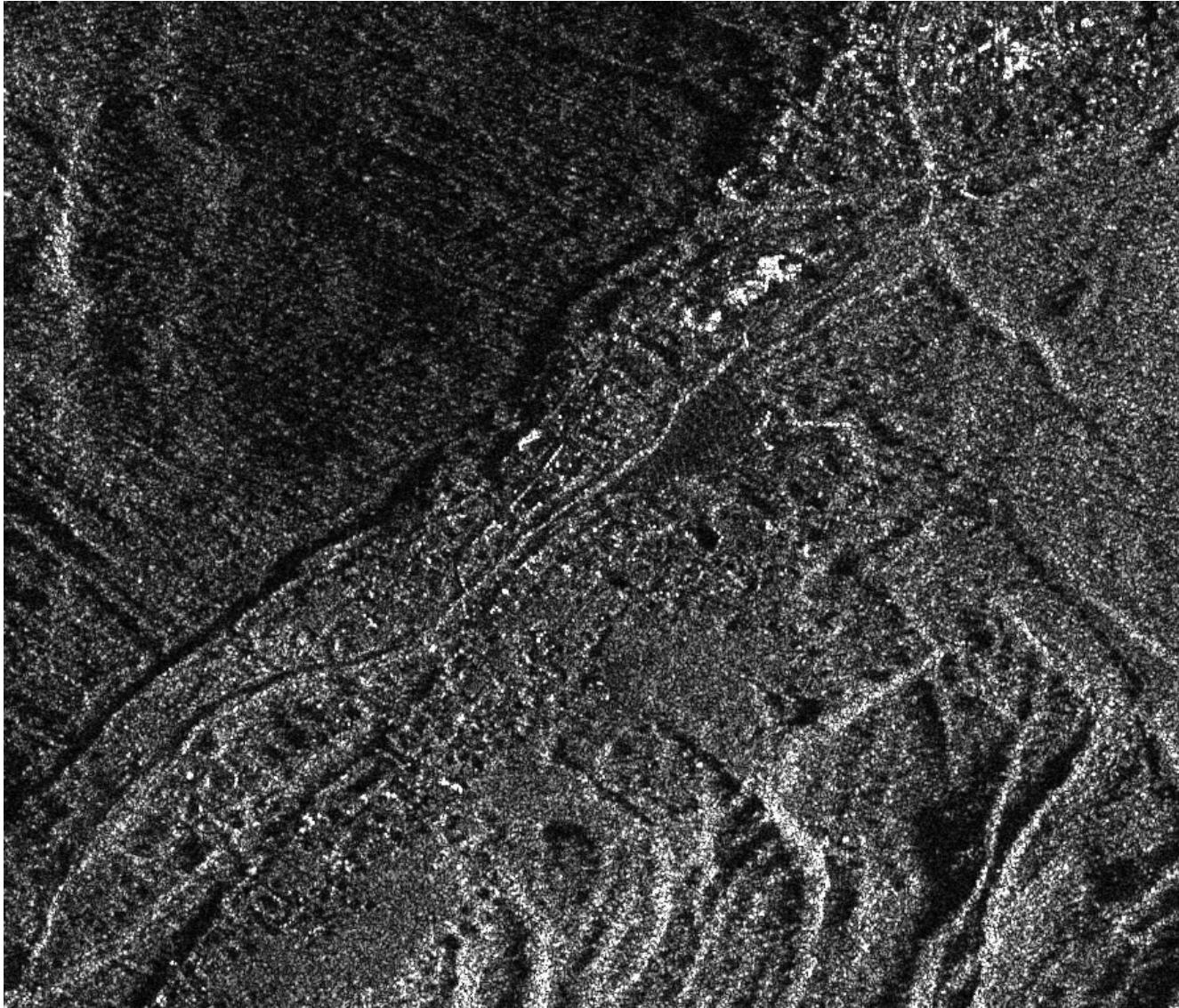


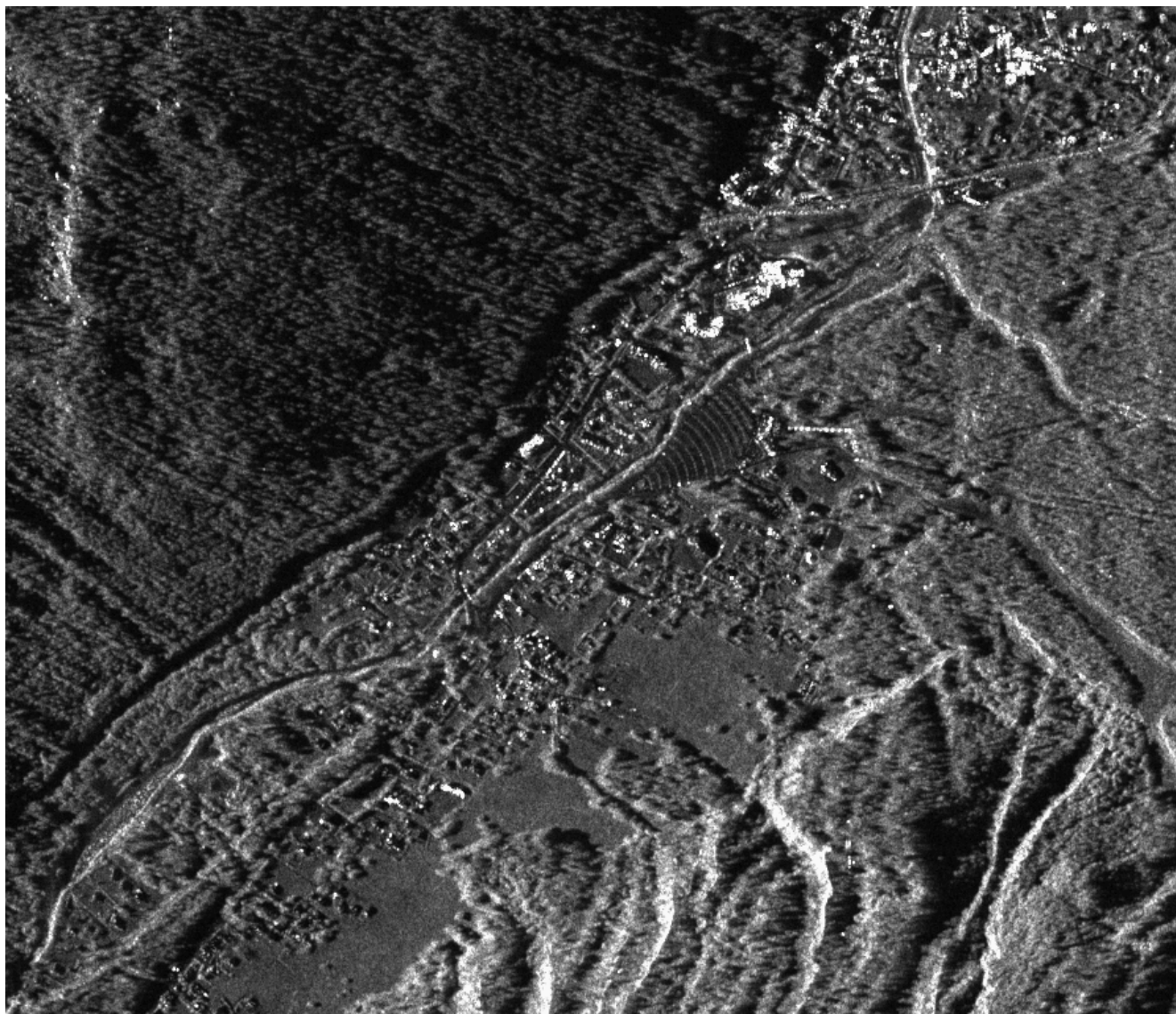


(F. Tupin, et al)



Filtrage d'une pile temporelle

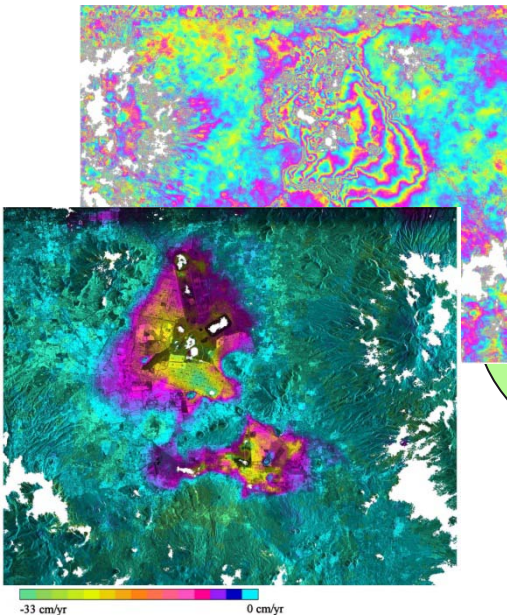




J. M Nicolas



Radar : Applications



applications à l'observation de la Terre
Avec : CNES, DLR, ONERA,
EADS, Thalès



- Monitoring des mouvements du sol
 - subsidence à Mexico
 - monitoring des glaciers
- Extraction du réseau hydrographique

