

Progress of Tianlai project in China

Xuelel Chen

Shijie Sun, Jiao Zhang

Cylinder



Cylinder



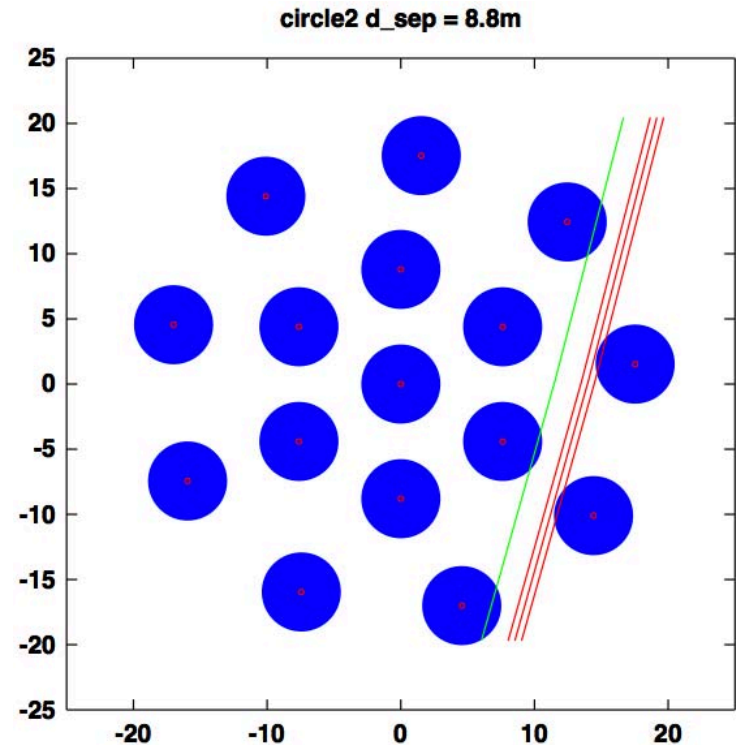
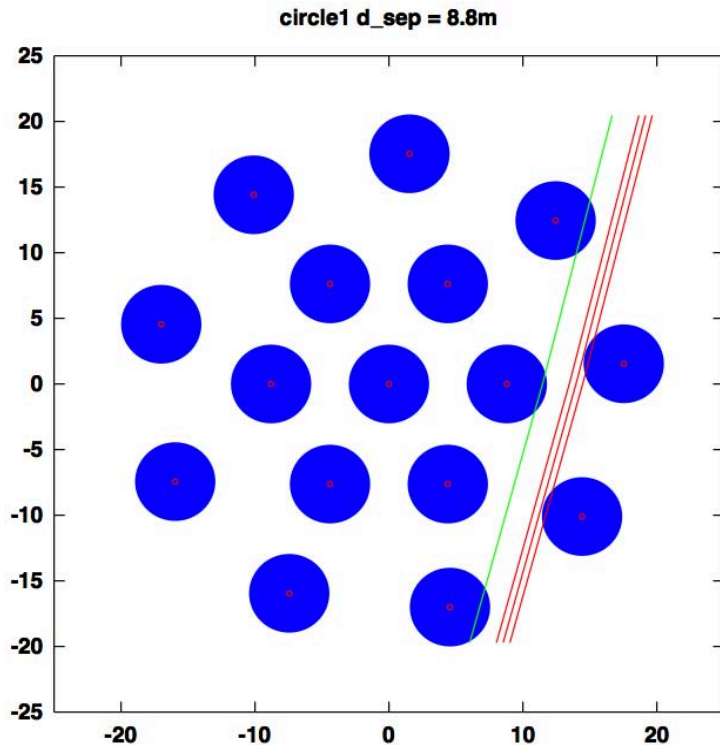
Ground for Dish Array



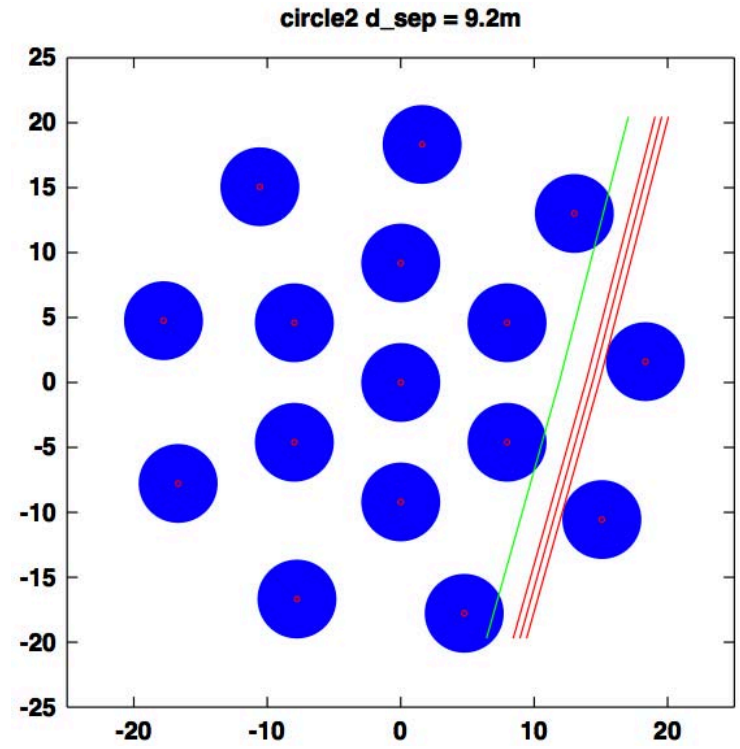
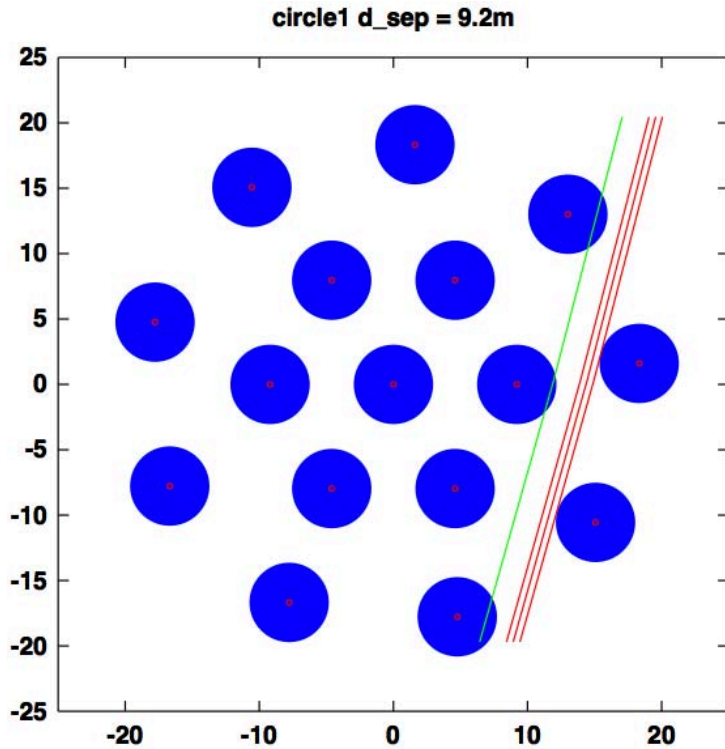


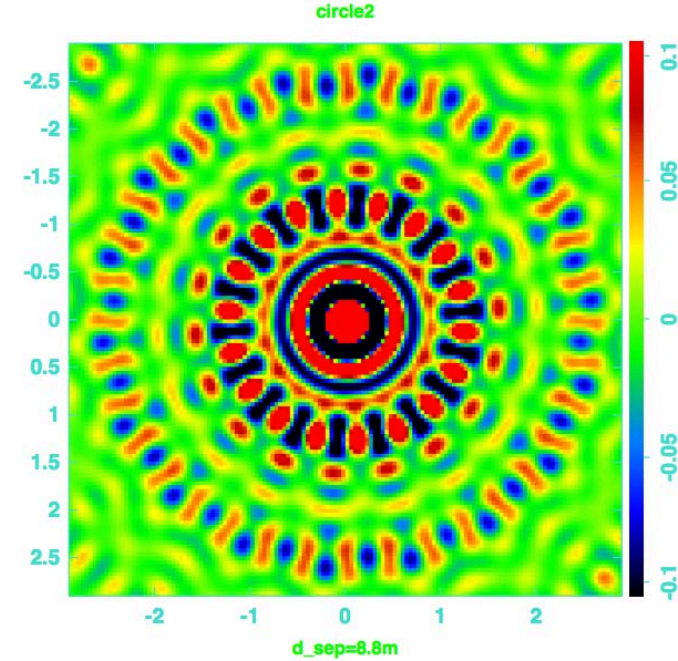
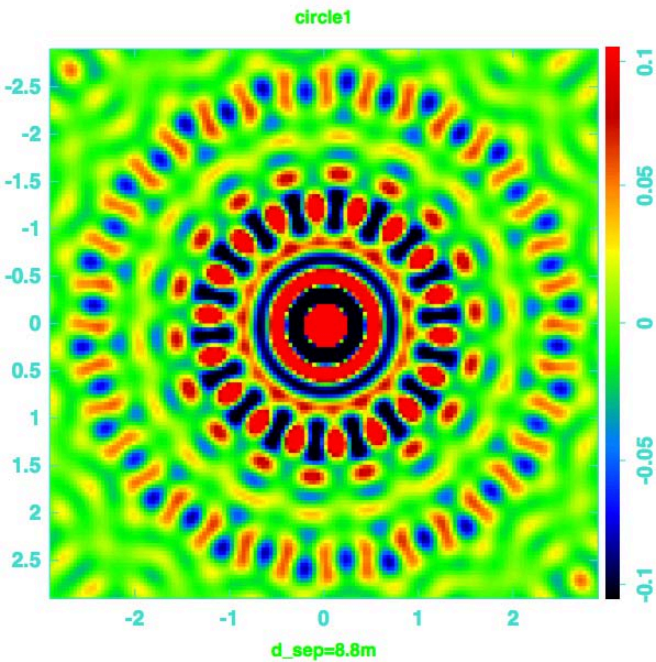
Configuration for $d_{\text{sep}} = 8.8\text{m}$

The outermost ring are same for two configurations
in which the dish start at $\Phi=5$ degrees with step 40 degrees.

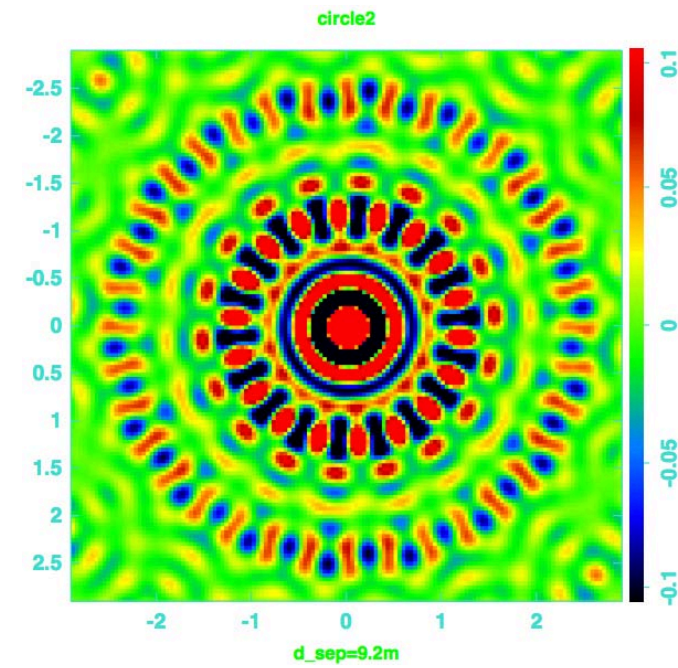
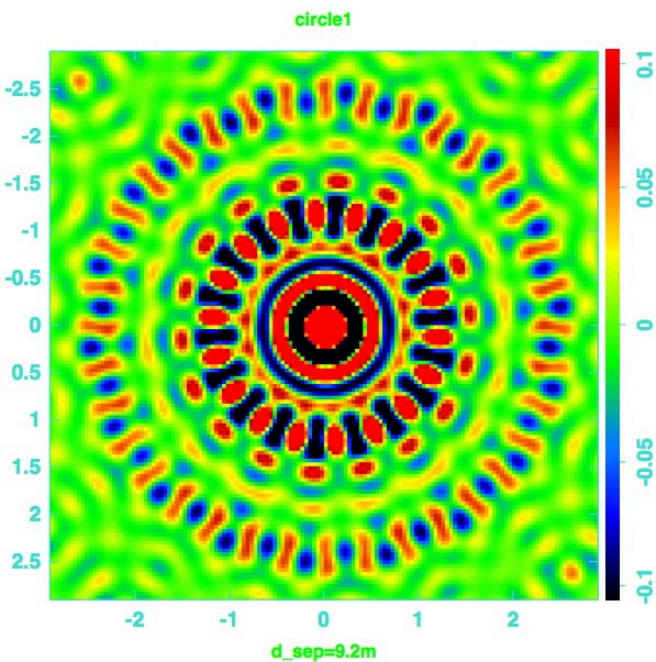


Configuration for $d_{\text{sep}} = 9.2\text{m}$

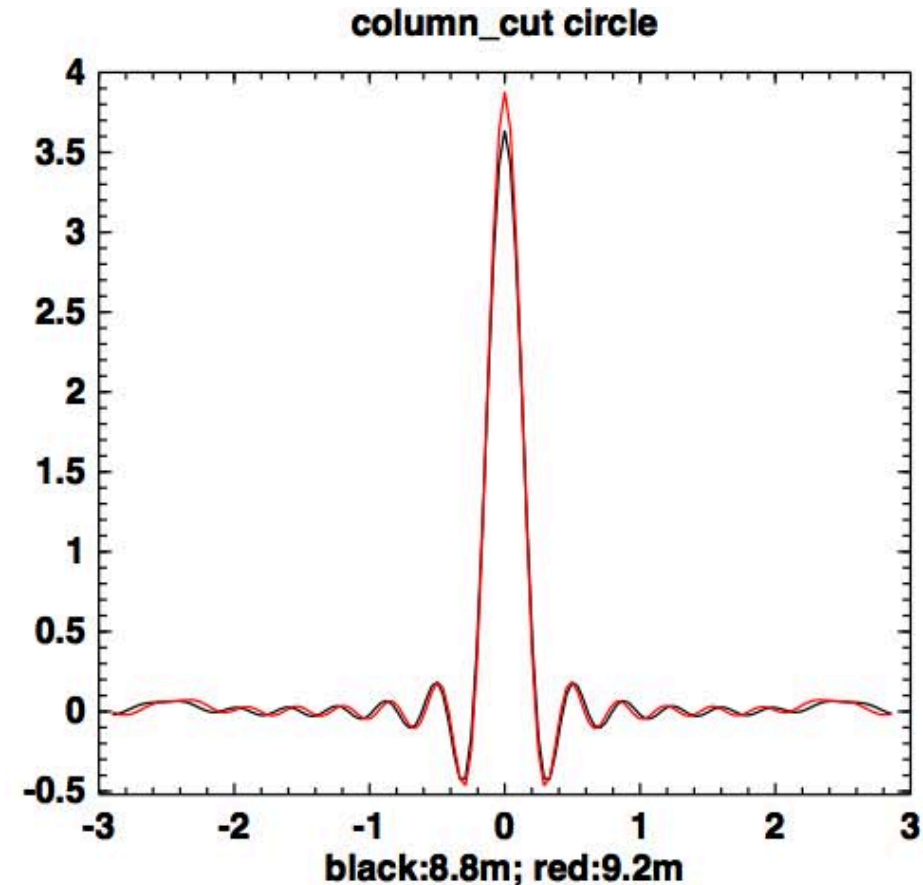
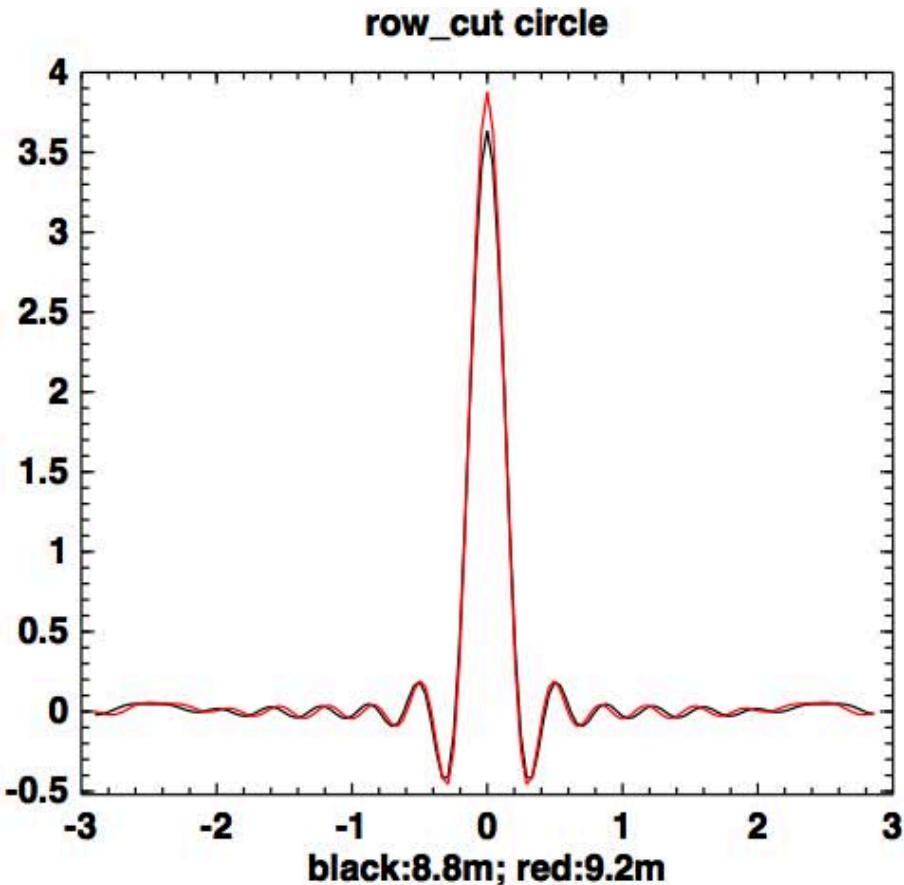




Synthesized beams



The center row curve and column curve for circle1



These curves are similar for circle2

Assembling Dishes









Annual Collaboration Workshop



- Balikun (stay in hotel), with visit to site (need to book hotel early)
- Urumuqi, with visit to site
- Beijing, with optional visit to site (from Beijing, need at least 3 extra days)

Date for the Workshop

I propose to have the workshop in the first week of September. July the place would not be ready (still installing things). In August I need to attend IAU and SKA Key Science Project meeting, not around much.

Minimum Schedule for meeting in Xinjiang

8.30 (Sun) arrive in Beijing
8.31 (Mon) early morning: fly to Urumuqi, bus to Balikun
9.1-3 (Tue-Thur) Meeting in Balikun
9.4 (Fri) visit site, depart, stay at hotel in Mulei or Qitai
9.5 (Sat) go to Urumuqi, fly to Beijing (arrive late night)
9.6 (Sun) Fly away from China

If you want, you may also come earlier or stay longer to explore Xinjiang (this is usually the best season)

Meeting in Beijing

8.30 (Sun) arrive in Beijing
8.31-9.2 (Mon-Wed) meeting
9.3 (Thur) fly away or go to Xinjiang (Balikun)
9.4 (Fri) visit site
9.5 (Sat) fly back to Beijing
9.6 (Sun) Fly away from China

Also, let me note that KITPC (in Beijing) have a Early Universe, Cosmology and Fundamental Physics program Sept.7-Sept.25, with me as an organizer. Maybe useful to attract some people to visit.

website: <http://kitpc.itp.ac.cn/?p=ProgDetail&id=PE20150907&i=main>