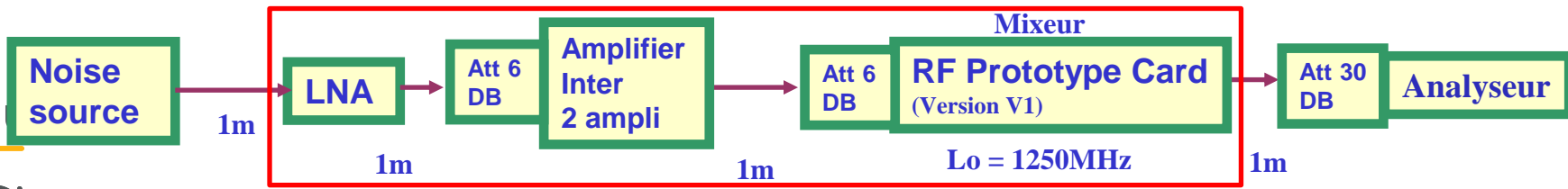


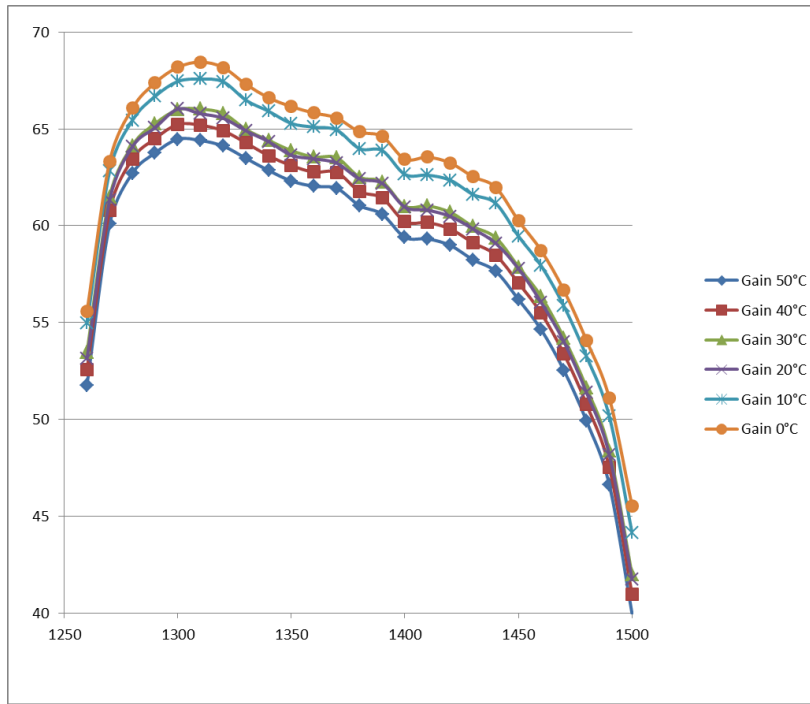
Analogique PAON4 : Test température 0°C à 50°C

Etuve = LNA + Inter + Mixeur

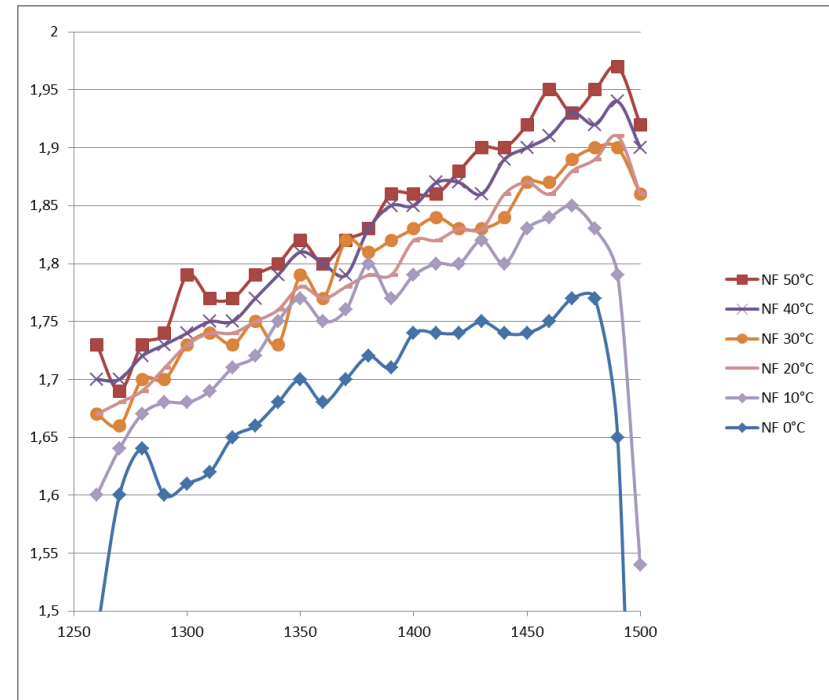


Etuve thermostatée

Variation maxi de gain entre 0°C et 55°C = -4 DB

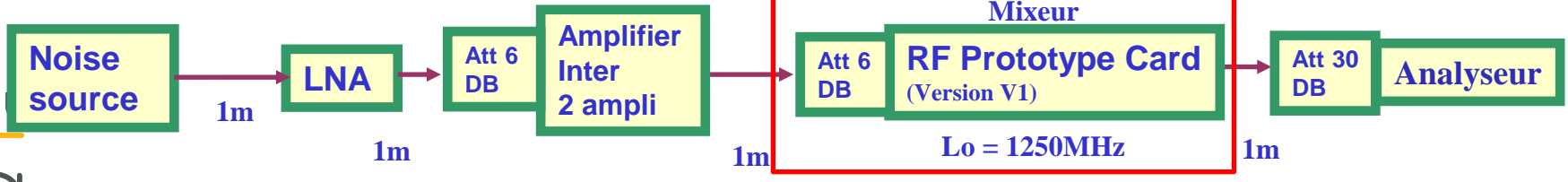


Variation maxi de NF entre 0°C et 55°C = +0,15 DB



Analogique PAON4 : Test température 0°C à 50°C

ir f

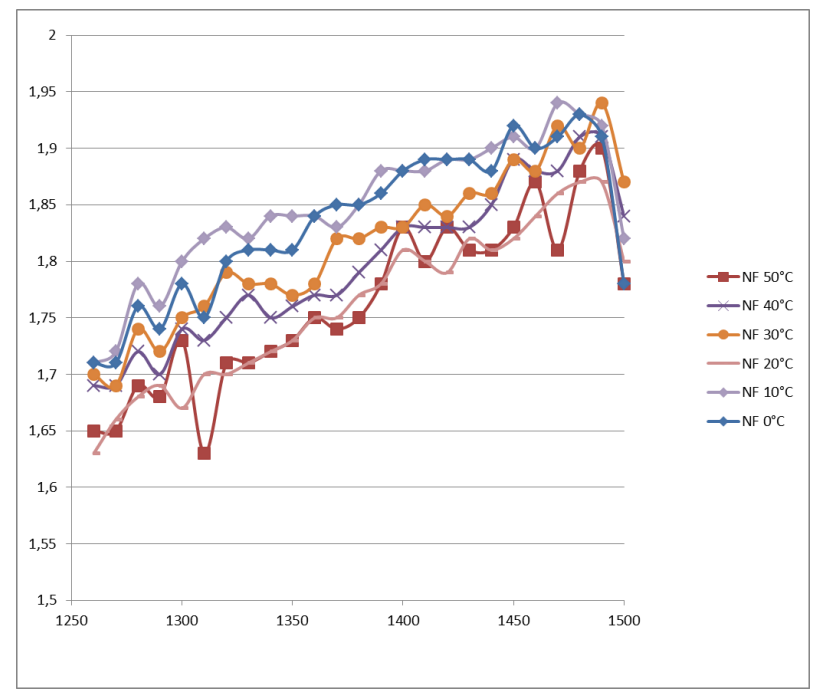
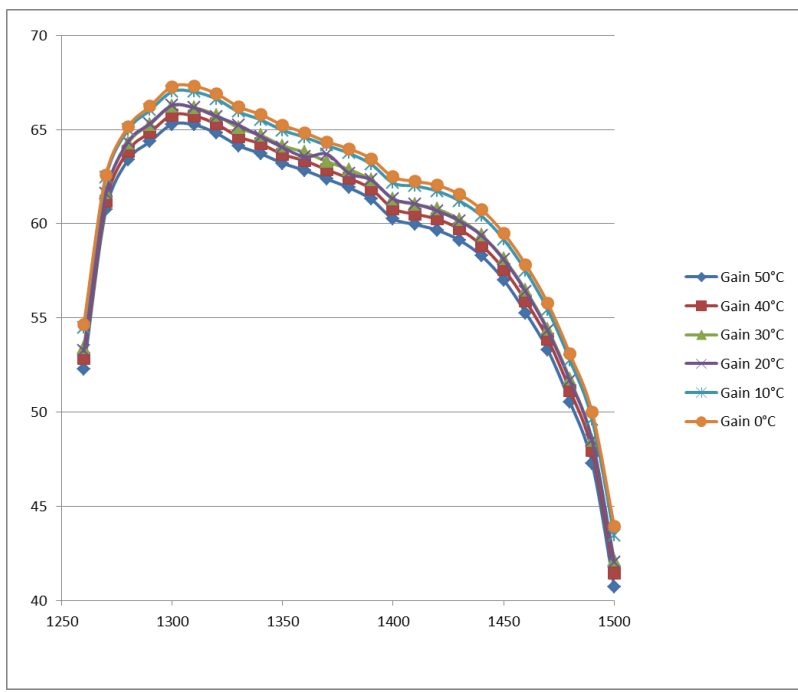


cea
saclay

Variation maxi de gain entre 0°C et 55°C = -2 DB

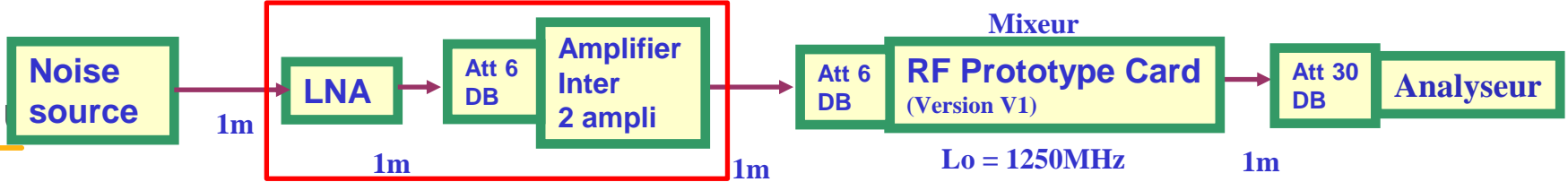
Etuve thermostatée

Variation maxi de NF entre 0°C et 55°C = -0,1 DB



Analogique PAON4 : Test température 0°C à 50°C

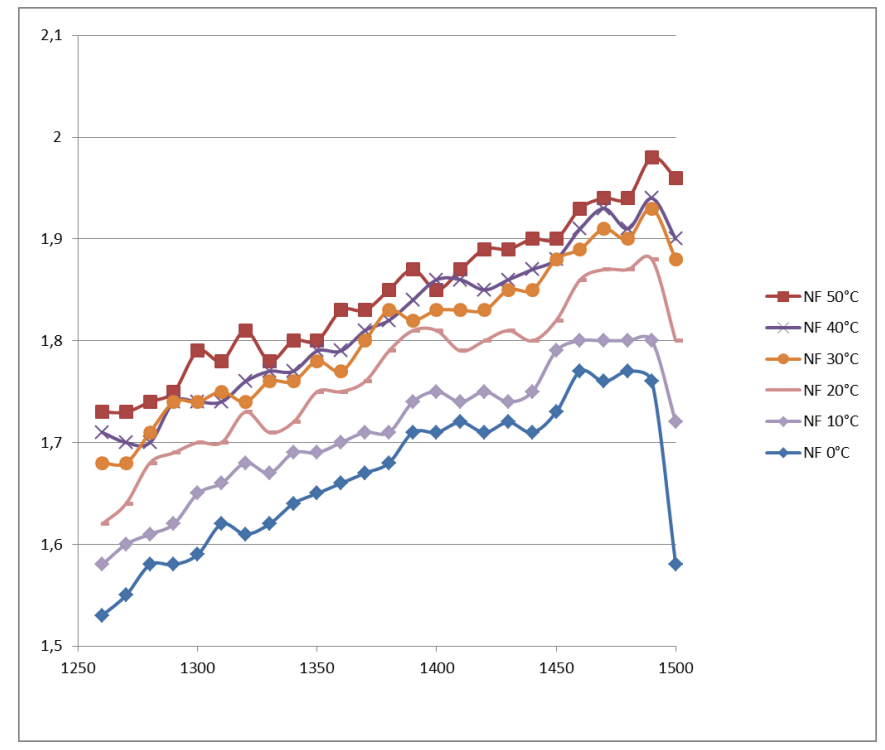
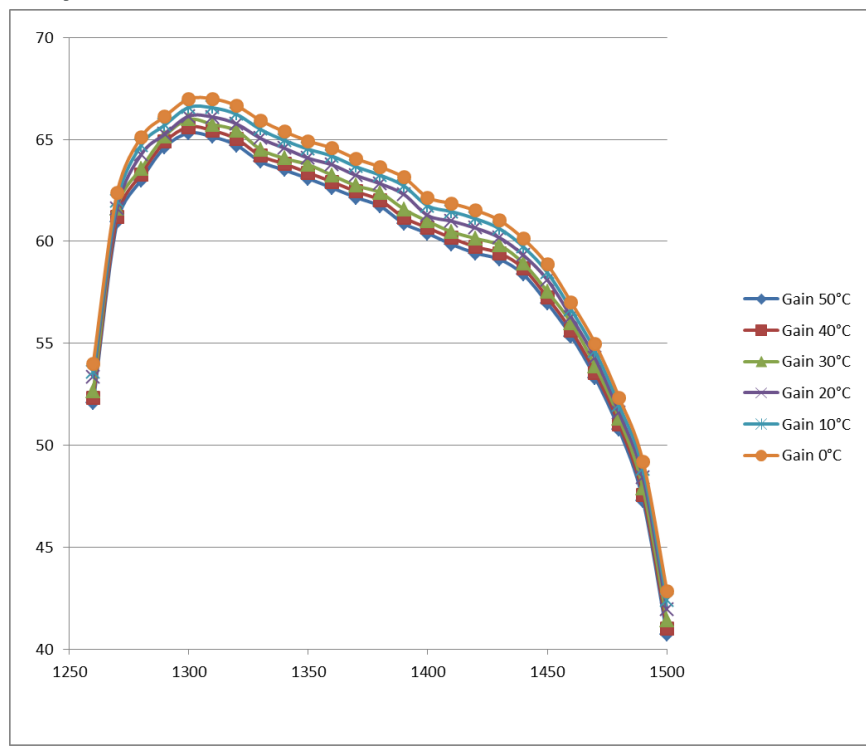
ir f



Etuve thermostatée

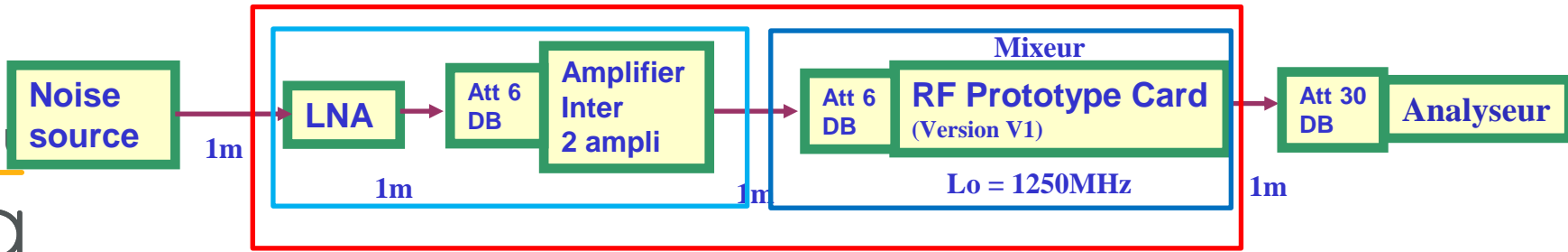
Variation maxi de gain entre 0°C et 55°C = -2 DB

Variation maxi de NF entre 0°C et 55°C = +0,1 DB



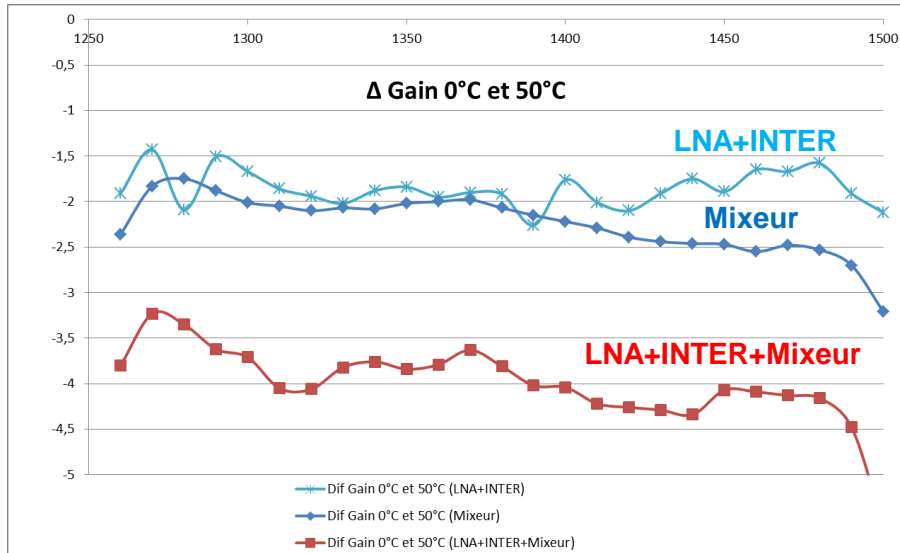
Analogique PAON4 : Test température 0°C à 50°C

irfu



Etuve thermostatée

Variation maxi de gain entre 0°C et 55°C = -4 DB



Variation maxi de NF entre 0°C et 55°C = +0,15 DB

