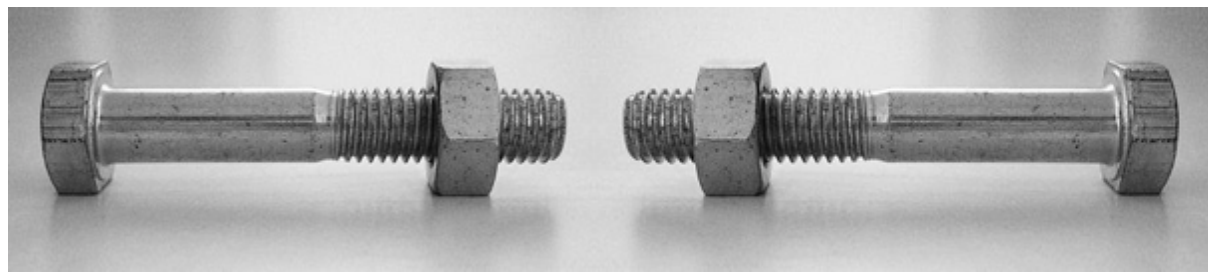


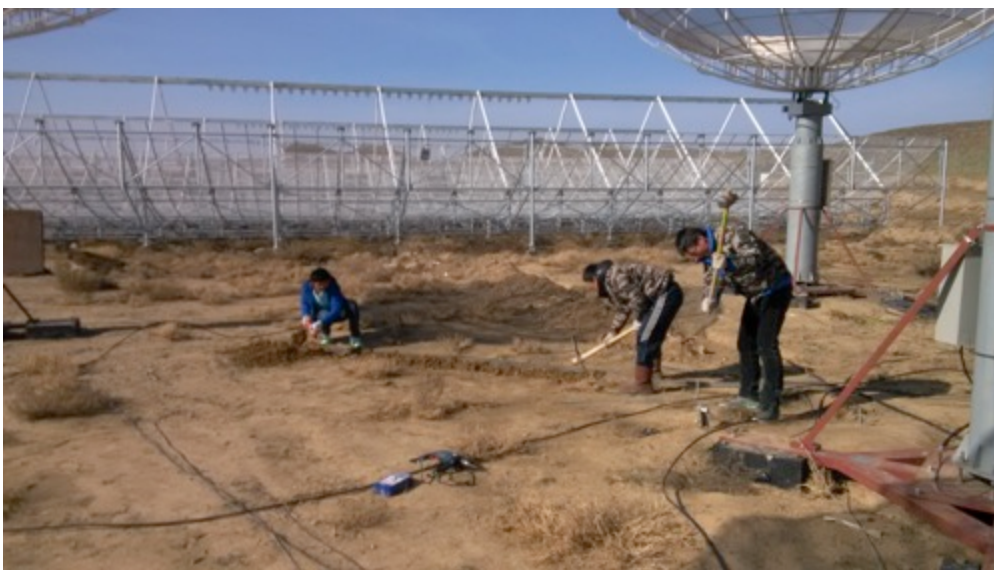
Progress Report

2015.11.12

Dish Antenna

- Many antenna exhibit sloshing. Initially the engineer from the manufacture thought it is normal and would get better after break-in period, but it seems to get worse.
- Now we think it is due to the two opposite bolts on one line are too long and blocking each other, so that it can not be really fastened. These two bolts are now replaced with one single long bolt. The antenna are being fixed at a rate of two per day. Now most have been fixed.
- Underground power cable installed
- Some circuit boards are damaged, probably due to lightning.

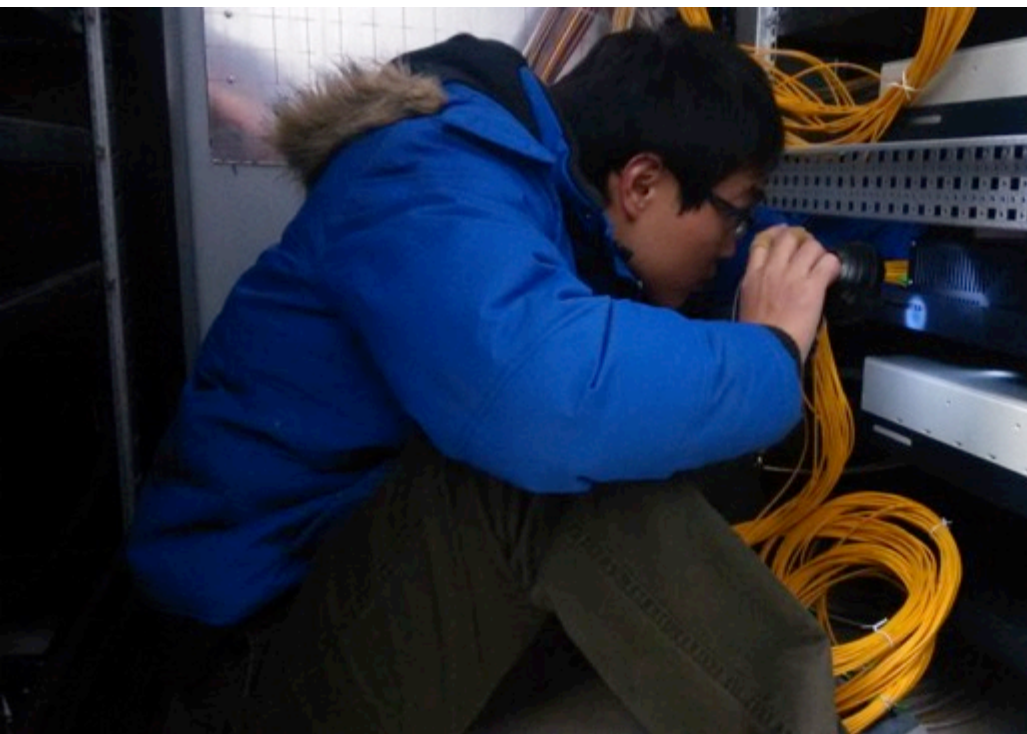




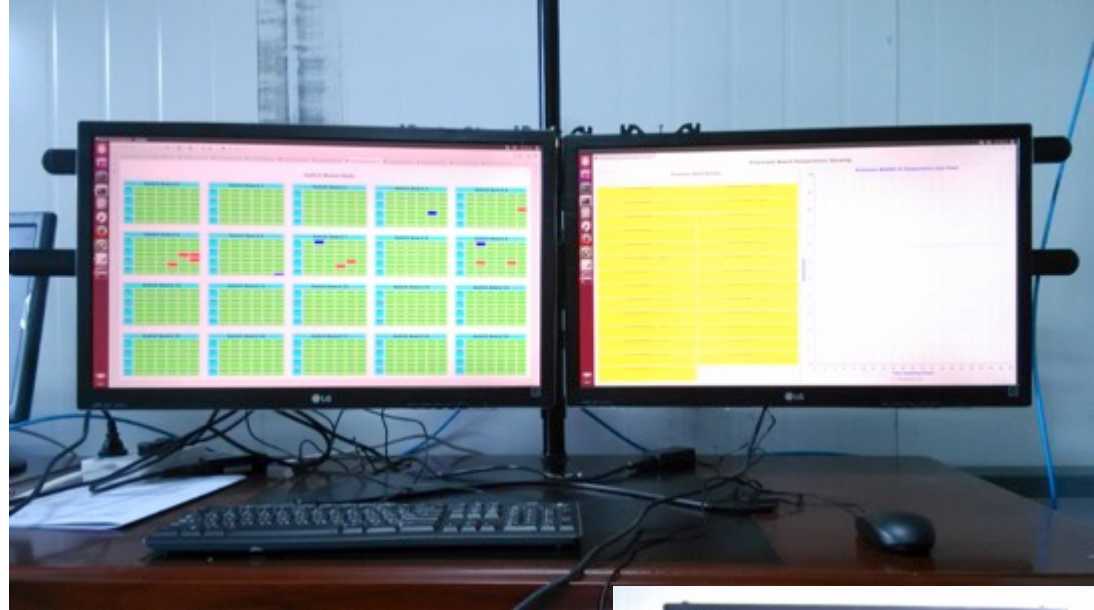
Correlator

- Correlator shipped and installed, lines connected
- 2 circuit boards (16 inputs) damaged, being replaced.
- Now output every 5 seconds. Theoretically now it can do 2 seconds output. Need to improve the data rate.
- A high power Air Conditioner installed.
- Room too small, and too much dust. May need re-arrange next year. Shipping container?







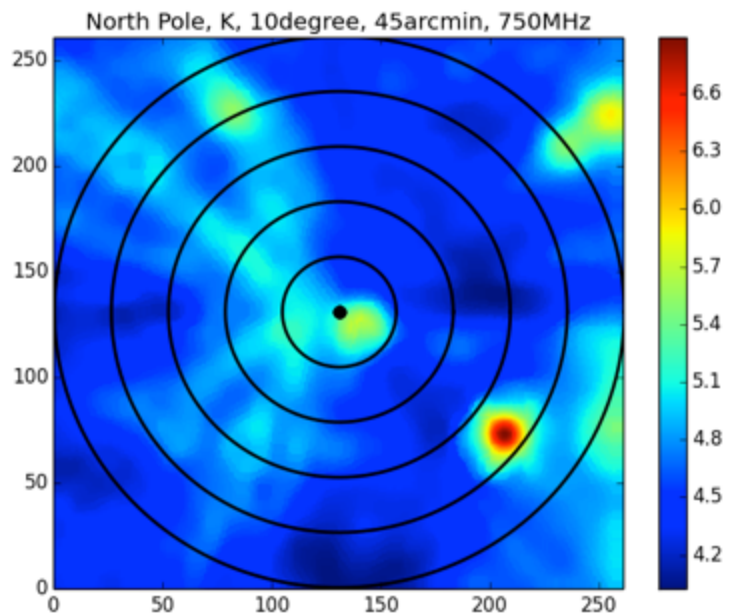


Calibration Antenna

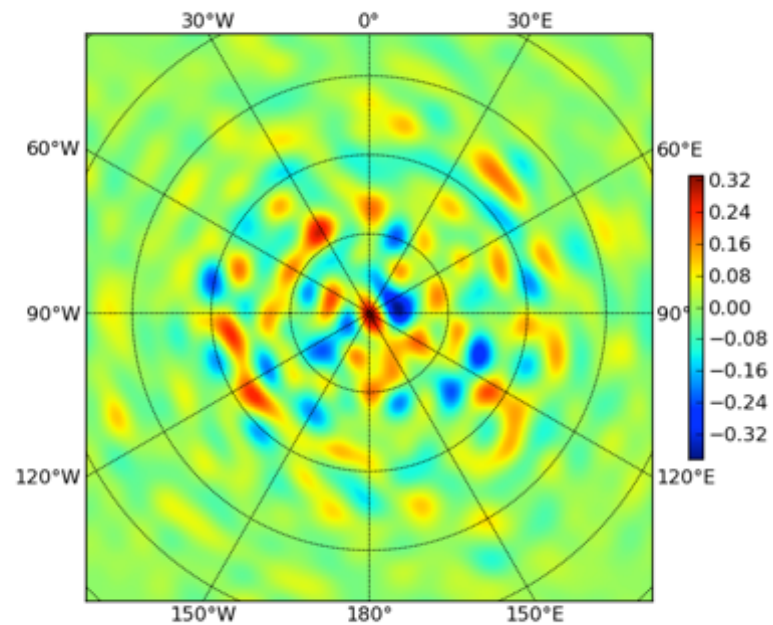
- We bought one second-hand optic fiber fusion splicing machine, it is taken to the site today
- We bought three 7m wood telephone poles for the calibration antenna post. Wu Fengquan think this is too high, so we cut one in two, digged holes, will be installed next few days

North Pole Image

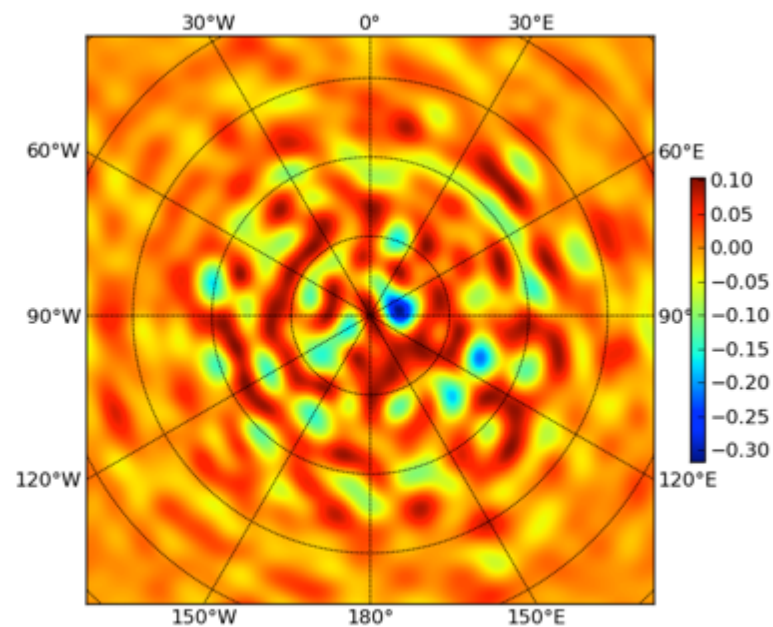
- Zuo Shifan used the dish array data collected on the night of Sept.22nd to make an image of the NCP region, but does not look like Huang Qizhi's simulation
- Afterwards, due to various other tasks and mechanical problems of the dish antenna, no new data is collected until a few days ago.



simulated image



dirty image



clean+residual