

MAPSSIC

A novel CMOS intracerebral probe for brain imaging in freely moving rats

Luis Ammour

PHENIICS Fest

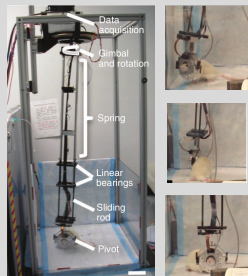
May 30–31 2017



What are anesthesia effects on neuroimaging studies ?

How to perform simultaneous behavior studies and real-time neuroimaging ?

RatCAP



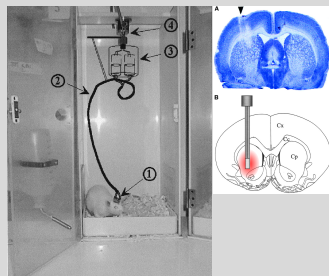
Schulz et al., Nature Methods, 2011.

Motion tracking



Spangler-Bickell et al., Phys. Med. Biol., 2016.

Beta Microprobe

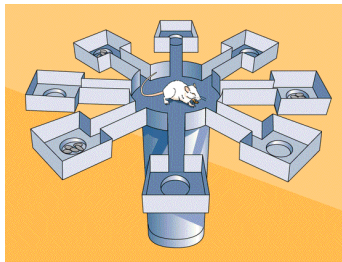
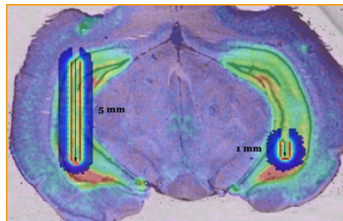


Pain et al., PNAS, 2002.

To develop a pixelated $\beta+$ sensitive imaging device

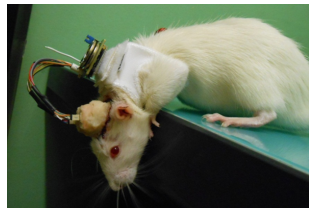
To limit annihilation rays and visible light sensitivity

To give real autonomy to the rat

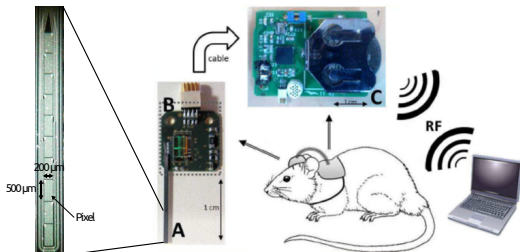


Reverse-biased high resistivity silicon diodes

- β^+ sensitivity
- Pixelated structure
- Wireless communication

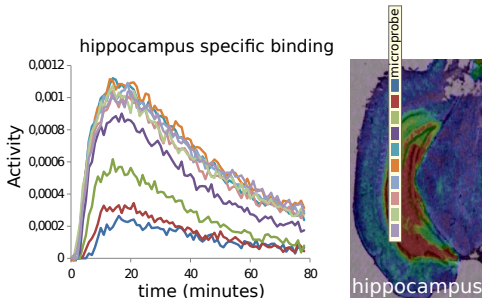


Fully freely moving animal with PIXSIC



A : Pixelated probe ; B : Readout electronic ; C : Battery and communication system

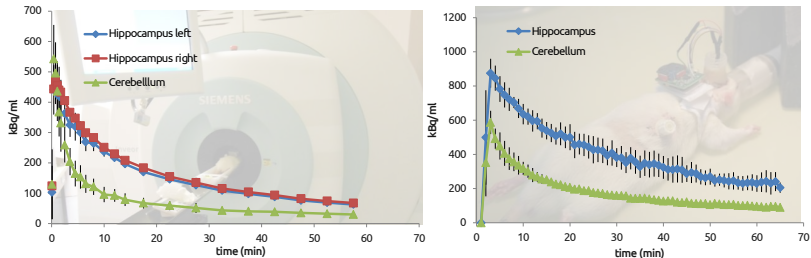
Several experiments validated PIXSIC biological and pharmacological suitability.



[18F]-MPPF injection - Hippocampus implantation.

Spatial distribution evaluation validated !

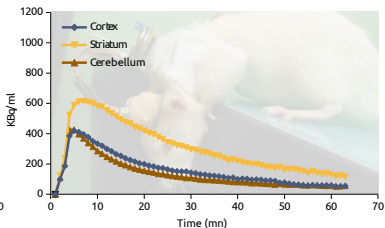
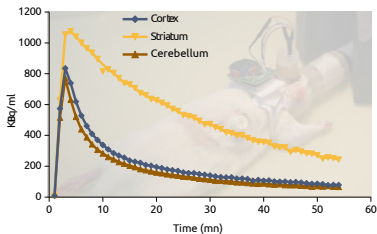
Several experiments validated PIXSIC biological and pharmacological suitability.



[18F]-MPPF 2 mCi injection - Hippocampus and cerebellum implantations.

Uptake measurement validated!

Several experiments validated PIXSIC biological and pharmacological suitability.



[11C]-raclopride 2 mCi injection - Striatum and cerebellum implantations.

PIXSIC shows anesthesia bias on neuroimaging results !

PIXSIC : It works !

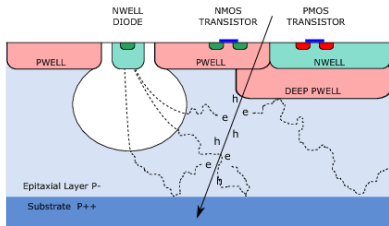
- First autonomous β^+ probe
- Validated in pharmacological studies
- Biocompatibility validated

... but it shows major limits :

- Mechanical robustness.
- Electronic noise.
- γ rays sensitivity.

CMOS MAPS technology

- Highly pixelated sensors.
- Direct amplification on the pixel.
- Data processing on the sensor.
- Low thickness of the sensitive volume.

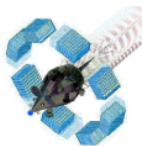


Charged particles detection in MAPS

MAPSSIC project aims to :

- Develop a CMOS MAPS sensor
- Develop front-end electronics
- Create an autonomous system on the animal head and back
- Validate the biological compatibility (temperature, size ...)
- Ensure mechanical and electrical robustness

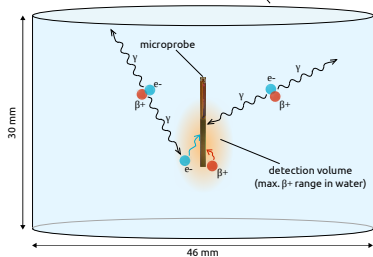
Use of Monte-Carlo simulations



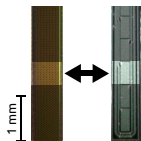
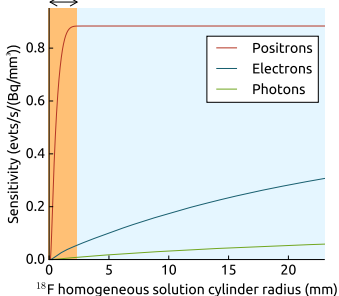
GATE

Simulations of Preclinical and Clinical Scans in Emission Tomography, Transmission Tomography and Radiation Therapy

beaker filled with an homogeneous radioactive solution



^{18}F β^+ max range
in water

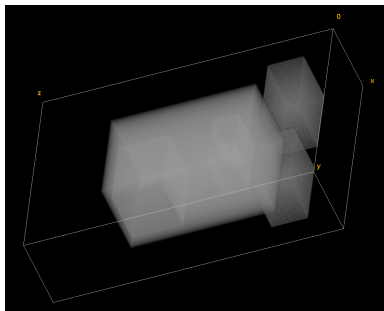


	MAPSSIC	PIXSIC
^{18}F	6.9	8.1
^{11}C	14.1	14.1
^{15}O	36.5	n/a

PIXSIC pixel vs MAPSSIC
10 rows sensitivity
($\times 10^{-2}$ evts/s/(Bq/mm³))

Positron sensitivity is compatible with biological experiments

γ and e^- sensitivities are very low in typical biological volume sizes



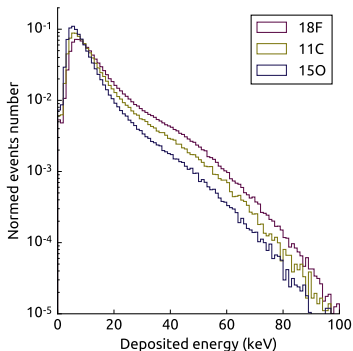
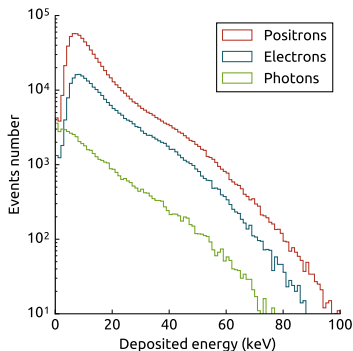
Simple brain model using 6 regions : cerebellum, striatum (left and right), other brain tissues and harderian glands (left and right)

Probe is inserted into left putamen region (LCPu), activity is distributed as in typical ^{11}C -raclopride experiments

	β^+	e^-	γ
Cerebellum	0.00	0.04	0.01
L. CPu	86.27	2.80	0.19
R. CPu	0.00	0.25	0.00
Brain (other)	7.90	1.42	0.23
L. HG	0.00	0.29	0.10
R. HG	0.00	0.39	0.10

Relative sensitivity (%)

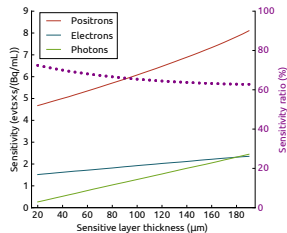
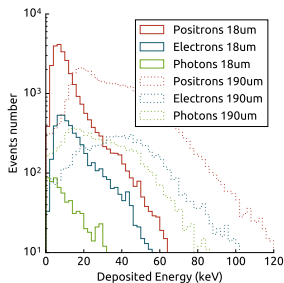
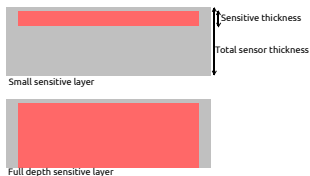
The probe is sensitive to local radioactivity



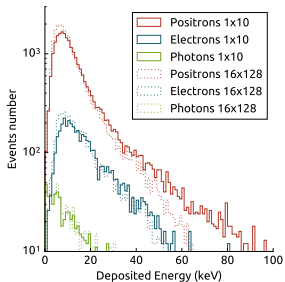
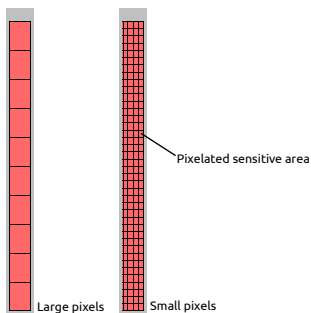
Mean deposited energy spectra in a single pixel

	$\beta^+ E_{mean}$	$\beta^+ E_{peak}$
¹⁸ F	15 keV	6 keV
¹¹ C	13 keV	6 keV
¹⁵ O	10 keV	7 keV

Noise level in biological medium should be low enough to allow detection



Sensitive layer thickness is a trade-off between sensitivity and S/N ratio



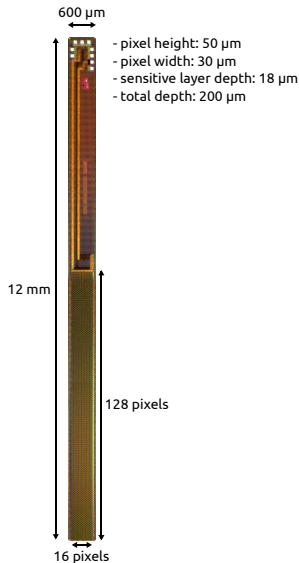
Pixels size variation only influences deposited energy

First prototype : IMIC-B

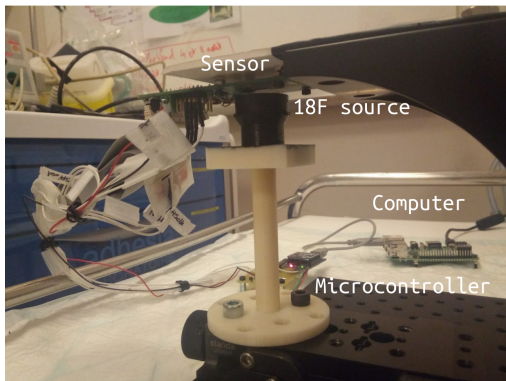
- 18 μm sensitive layer
- digital sensor
- 1 bit memory per frame
- Low power consumption (16 μW)

Second prototype : IMIC-LF

- HVCMOS
- 25 μm sensitive layer at 10 V
- Digital or analogic sensor



IMIC-B sensor photography

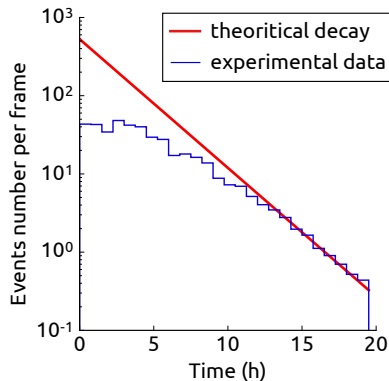
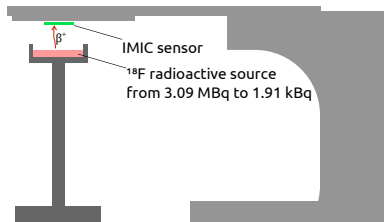


Experimental setup



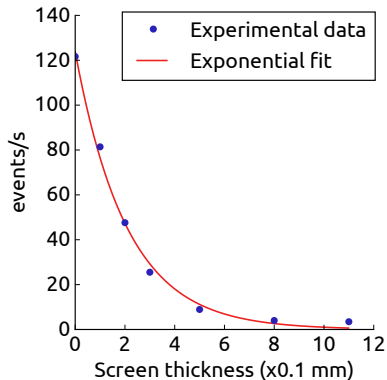
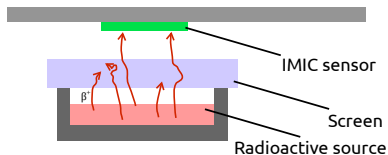
Example image

Acquisition of sensor images over time (451 ms/frame)
An incident particles leads to a cluster of activated pixels



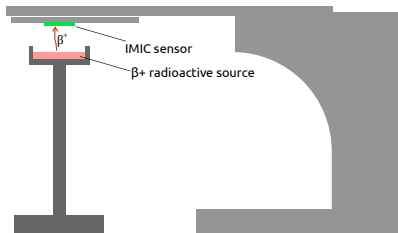
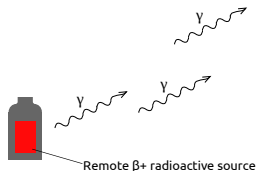
We observe events pile-up at high count rates but a good linearity at low count rates

There is a good accordance between MC simulation and experimental sensitivity measurement in the linear region (3.58×10^2 evts/s/MBq)



Typical positron attenuation profile (fitted by one exponential decay $I(l) = I_0 \times e^{-al}$ with linear coefficient $a = 4.8 \text{ mm}^{-1}$)

Remote annihilation gammas source :



No significant difference with or without remote β^+ source.

Background noise (no source, no visible light) :

Low background noise : 9.0×10^{-4} events/s

Conclusion :

- CMOS MAPS are well suited for positron detection
- Our first sensor prototype is ready to be included in a probe setup

Outlook :

- Full probe design
- Control and acquisition electronics, backpack and connectivity
- Biocompatibility challenges (heat dissipation)
- Performances assessment in more realistic Monte-Carlo simulations and experimental conditions

Thank you for your attention

IMNC, Orsay

L. Ammour,
F. Lefebvre,
F. Pain,
L. Pinot,
P. Laniece,
M.-A. Verdier

IPHC,
Strasbourg

J. Heymes,
M. Kachel,
J. Baudot

CPPM,
Marseille

M. Bautista,
F. Gensolen,
P. Pangaud,
C. Morel

CRNL, Lyon

S. Fieux,
L. Zimmer

NeuroPSI,
Orsay

P. Gisquet-Verrier



Mission interdisciplinarité
Centre national de la recherche scientifique

Institut national de physique nucléaire et de physique des particules
Centre national de la recherche scientifique