

News de Paon4

R. Ansari, O. Perdereau, et al.

LAL, Univ. Paris-Sud, CNRS/IN2P3,

Université Paris-Saclay,
Orsay, France

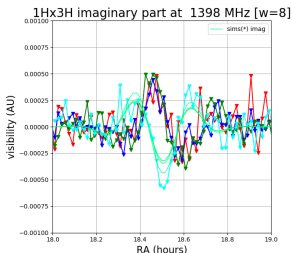
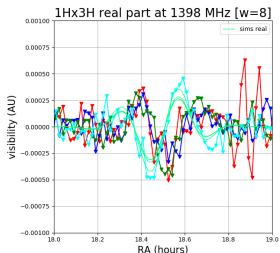
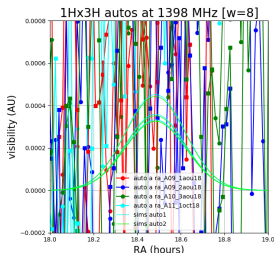
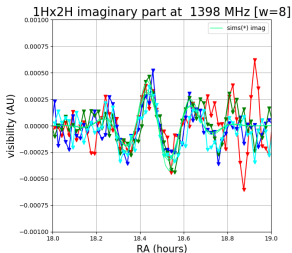
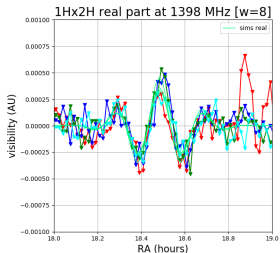
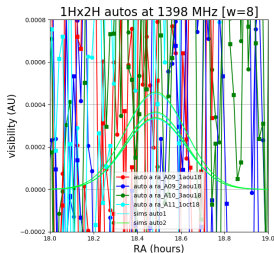


Réunion PAON4
17 avril 2019

New/remaining problems

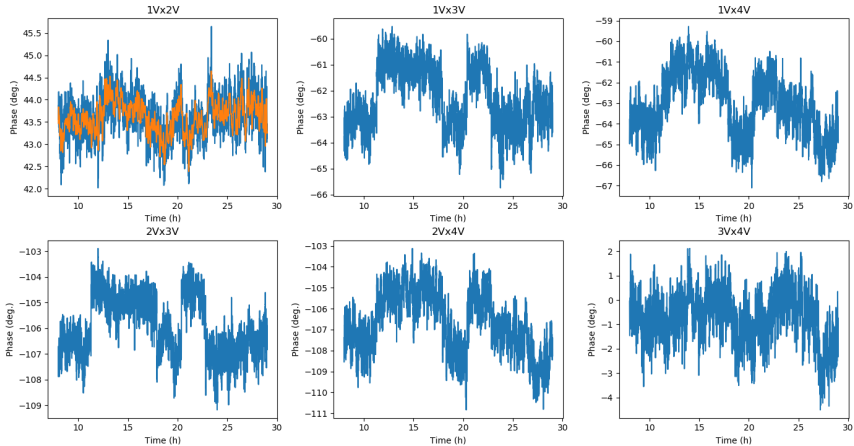
- some evidence for relative mis-alignment between dishes (of order $\lesssim 1$ degree in azimuth)
- Relative (electronic) phases instabilities :
 - ▶ trigger signal “propagation” in/between boards not well understood
 - ▶ DAQ soft now “synchronizes” data samples
 - ▶ ensures internal phase stability but some “jumps” from one day to the other (daq started each day)
 - ▶ checked by injecting single frequency signal
 - ▶ attempt to monitor phases with satellites but ... not enough “good” data/day

3C380 observations : phase shifts?



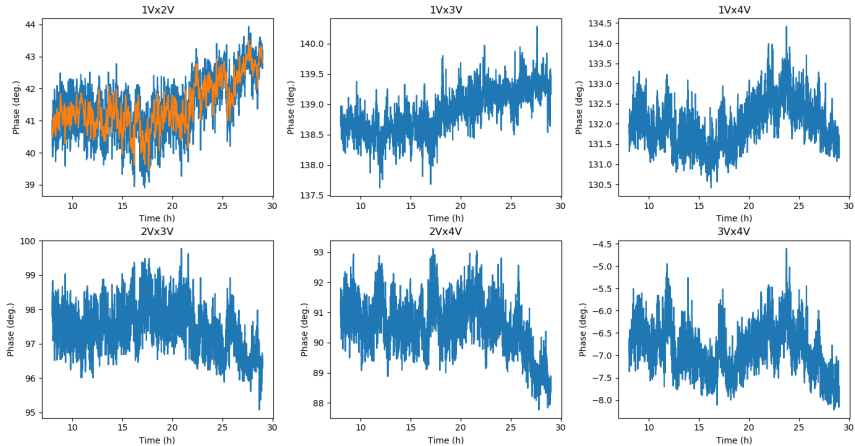
phase from external signal

B17_12dec18



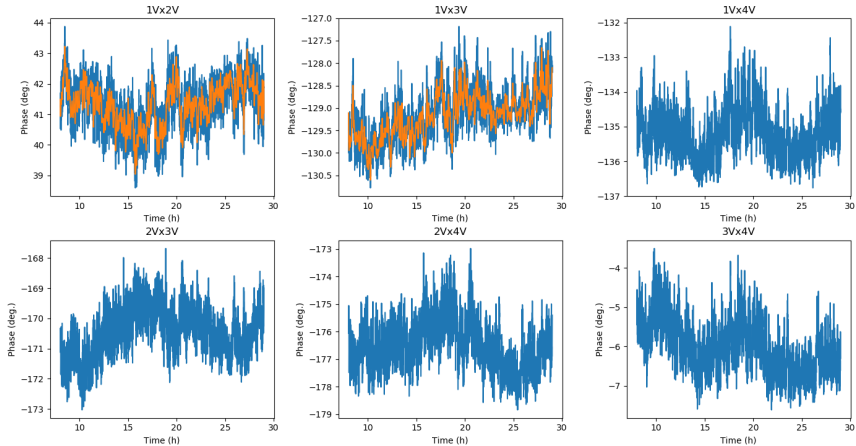
phase from external signal

B16_10dec18

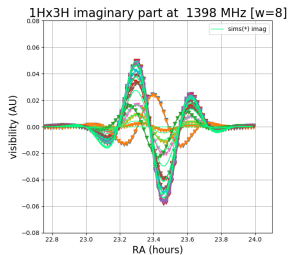
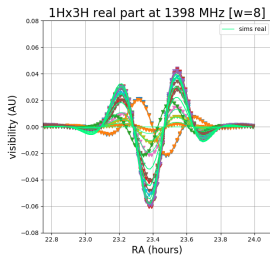
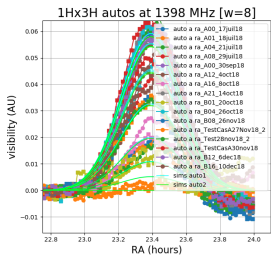
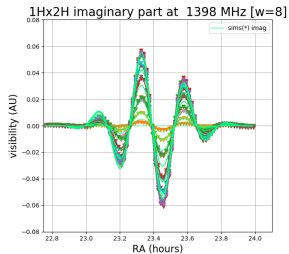
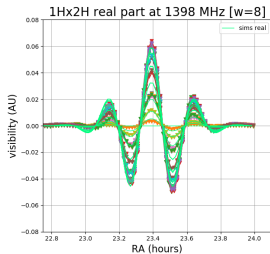
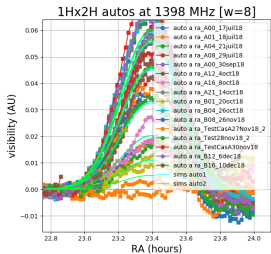


phase from external signal

B12_6dec18



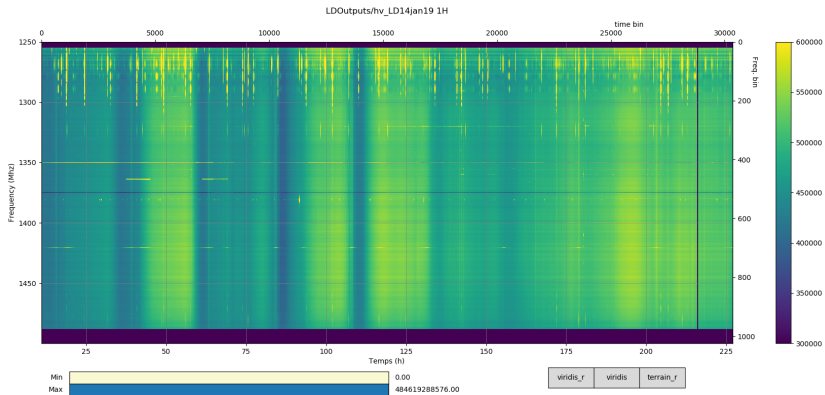
CasA observations



New (long) data

- ~ 10 day data taking w/o daq stop (14-24 january)
- several elevations (CasA, CygA, Crab and VirA)
- objectives :
 - ▶ set up a “pointing model” for each dish
 - ▶ measure phases from the combination of (as many as possible) satellite crossings
- work in progress : gain drift correction, satellite identification, handling solar system objects (e.g. the Moon !) ...

tf maps (auto)



tf maps (cross-correlation)

