

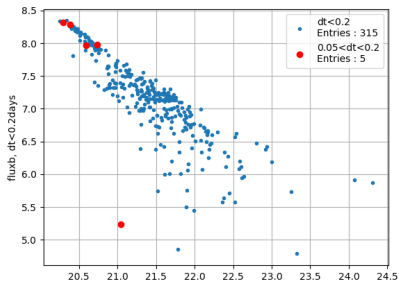
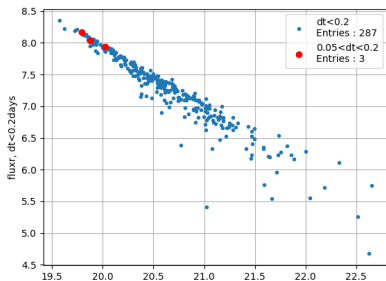
# Deux transformations à comprendre

- Fichiers de suivi  $\rightarrow$  (Flux, temps) de Tisserand et al
- (Flux, temps) de Tisserand et al  $\rightarrow$  CDL ascii IRODS

# Fichiers de suivi $\rightarrow$ (Flux, temps) de Tisserand

Im0073m17729:

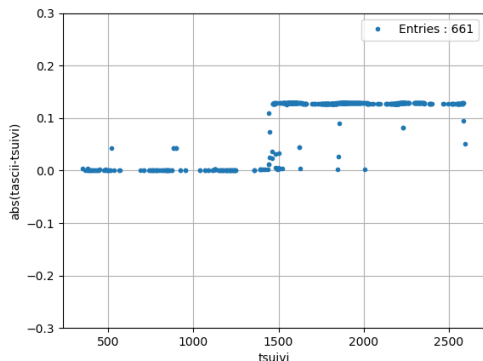
$2.5 \log(\text{flux})$ (suivi) vs Reros, Beros (ascii)



- Tisserand flux decorrelated with airmass, seeing...  
Can we reproduce this?

# Fichiers de suivi $\rightarrow$ (Flux, temps) de Tisserand

Im0073m17729:



- Time shift of 0.1 days at  $t$  1500
- 6 points out of 348 have 1day shift between suivi and Tisserand

# (Flux,temps) de Tisserand et al → CDL IRODS

```
Terminal - rich@dedippcc92: ~/Anastasis/Patrick
File Edit View Terminal Tabs Help
rich@dedippcc92:~/Anastasis/Patrick$ eog ~/asciitime.png
rich@dedippcc92:~/Anastasis/Patrick$ head ../Anastasis/Tisserand/LMC/Lcurves/Curves/sm0054m5761.time
code eros date HJD FluxR ErrFluxR FluxB ErrFluxB
6g2715 292.8589 8551.2 215.3 18292.6 426.4
6g2871 293.6580 8142.8 269.4 0 0
6g2882 293.7061 8266.4 314.8 19821.6 613.8
6g2987 294.7151 8329.5 293.9 19631.5 615.6
6g29107 294.8301 9021.4 281.8 19606.2 666.2
6g3083 295.9141 8568.1 730.2 0 0
6g31133 296.8369 8331.1 346.4 19285.8 627.7
6h0679 302.8440 0 0 18398.4 605.7
6h0882 304.9009 8673.4 271.2 0 0
rich@dedippcc92:~/Anastasis/Patrick$ head sm0054m5761.time
# star: erosid MagR ErrMR XR YR MagB ErrMB XB YB
# sm0054m5761 18.128 0.055 1425.83 1448.07 18.003 0.035 1381.33 1485.69
#
# date MagR ErMagR MagB ErMagB
292.85950 18.023 0.027 17.937 0.025
293.65790 18.076 0.036 99.999 9.999
293.70590 18.060 0.041 17.850 0.034
294.71481 18.051 0.038 17.860 0.034
294.82981 17.965 0.034 17.862 0.037
295.91441 18.021 0.093 99.999 9.999
rich@dedippcc92:~/Anastasis/Patrick$ gnome-screenshot -i
```

- nom de l'image dans Tisserand ascii;
- petit differences de date
- zero points irods smc = nominal zp(ccd) + tpose(champs)
- zero points irods lmc = individual pour champs,ccd

# Some Questions

- Add flux to ascii irods?
- Add image name to ascii irods?
- Verify magnitude calibration for all fields?
- Paper: is Tisserand et al 2007 enough?